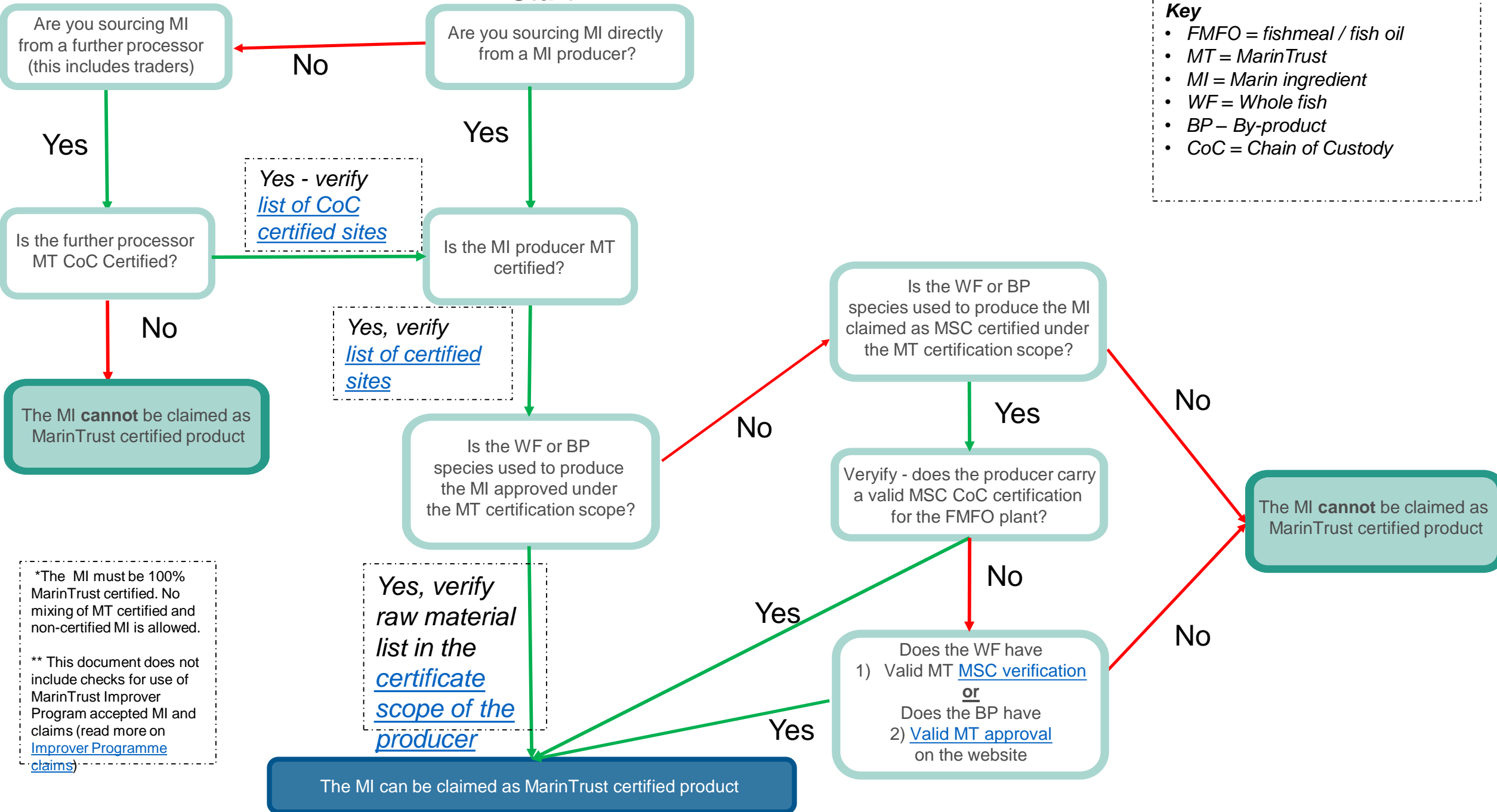


Start

Key

- FMFO = fishmeal / fish oil
- MT = MarinTrust
- MI = Marin ingredient
- WF = Whole fish
- BP – By-product
- CoC = Chain of Custody



Yes - verify [list of CoC certified sites](#)

Yes, verify [list of certified sites](#)

Yes, verify [raw material list in the certificate scope of the producer](#)

*The MI must be 100% MarinTrust certified. No mixing of MT certified and non-certified MI is allowed.

** This document does not include checks for use of MarinTrust Improver Program accepted MI and claims (read more on [Improver Programme claims](#))

The MI can be claimed as MarinTrust certified product

The MI cannot be claimed as MarinTrust certified product