



MarinTrust Standard V2

By-product Fishery Assessment *Haddock (Melanogrammus aeglefinus)* *in ICES Subarea 4, Division 6a,* *Subdivision 20*

MarinTrust Programme

Unit C, Printworks

22 Amelia Street

London

SE17 3BZ

E: standards@marin-trust.com

T: +44 2039 780 819

Table 1 Application details and summary of the assessment outcome

| | | |
|-----------------------------------------|-----------------------------------|--------------------------------------------------------------------------------------------|
| Fishery Under Assessment | Species: | Haddock (<i>Melanogrammus aeglefinus</i>) |
| | Geographical area: | FAO Area 27 North East Atlantic |
| | Country of origin of the product: | U.K. & Ireland |
| | Stock: | Haddock (<i>Melanogrammus aeglefinus</i>) in ICES Subarea 4, Division 6a, Subdivision 20 |
| Date | March 2022 | |
| Report Code | BP035 | |
| Assessor | Vito Romito | |
| Country of origin of the product - PASS | U.K. & Ireland | |
| Country of origin of the product - FAIL | | |

| Application details and summary of the assessment outcome | | | |
|-----------------------------------------------------------|---------------|----------------------------|-----------------------------------|
| Company Name(s): Pelagia | | | |
| Country: U.K. & Ireland | | | |
| Email address: | | Applicant Code: | |
| Certification Body Details | | | |
| Name of Certification Body: | | Global Trust Certification | |
| Assessor | Peer Reviewer | Assessment Days | Initial/Surveillance/ Re-approval |
| Vito Romito | Ivan Mateo | 0.5 | Surveillance 2 |
| Assessment Period | To March 2022 | | |

| Scope Details | |
|---------------------------------------|---------------------------------------------|
| Main Species | Haddock (<i>Melanogrammus aeglefinus</i>) |
| Stock | ICES Subarea 4, Division 6a, Subdivision 20 |
| Fishery Location | North Sea |
| Management Authority (Country/ State) | EU CFP |
| Gear Type(s) | All |
| Outcome of Assessment | |
| Peer Review Evaluation | Agree with assessor's assessment |
| Recommendation | Approve |

Table 2. Assessment Determination

| Assessment Determination |
|------------------------------------------------------------------------------------------------------------------------------------------------------------------------------------------------------------------------------------------------------------------------------------------------------------------------------------------------------------------------------------------------------------------------------------------------------------------------------------------------------------------------------------------------------------------------------------------------------------------------------------------------------------------------------------------------------------------------------------------------------------------------------------------------------------------------------------------------------------------------------------------------------------------------------------------------------------------------------------------------------------------------------------------------------------------------------------------------------------------------------------------------------------------------------------------------------------------------------------------------------------------------------------------------|
| <p>If any species is categorised as Endangered or Critically Endangered on IUCN's Red List, or if it appears in the CITES appendices, it cannot be approved for use as Marin Trust raw material. Haddock (<i>Melanogrammus aeglefinus</i>) is neither listed as Endangered or Critically Endangered on IUCN's Red List, nor listed in CITES appendices; therefore, it is eligible for approval for use as Marin Trust by-product raw material.</p> <p>An EU multiannual management plan (MAP) has been agreed by the EU for this stock (EU, 2018). There is no agreement with Norway regarding this plan, and it is not used as the basis of the advice for this shared stock. ICES was requested by the EC and UK to provide advice based on the MSY approach, and to include FMSY ranges in the catch scenarios. ICES advises that when the MSY approach is applied, total catches in 2022 should be no more than 128 708 tonnes.</p> <p>The stock is assessed by ICES and therefore assessed as a Category C here. Fishing pressure on the stock is below FMSY and spawning-stock size is above MSY Btrigger, Bpa, and Blim. Therefore, this haddock stock is APPROVED for the production of fishmeal and fish oil under the current Marin Trust v 2.0 Standard for by-products.</p> |
| Fishery Assessment Peer Review Comments |
| <p>The assessor correctly classified the Haddock (<i>Melanogrammus aeglefinus</i>) in ICES Subarea 4, Division 6a, Subdivision 20 as category C, the stock is managed, and reference points are defined to assess the stock status against.</p> <p>Fishery removals from the stock are considered in the stock assessment process. The most recent stock assessment shows that the stock is considered to have a biomass well above the limit reference point.</p> <p>Therefore, Haddock (<i>Melanogrammus aeglefinus</i>) in ICES Subarea 4, Division 6a, Subdivision 20 fishery passes both C1.1 and C1.2 and therefore haddock (<i>Melanogrammus aeglefinus</i>) in ICES Subarea 4, Division 6a, Subdivision 20 is approved</p> |
| Notes for On-site Auditor |
| NA |

Species Categorisation

NB: If any species is categorised as Endangered or Critically Endangered on the IUCN Red List, or if it appears in CITES Appendix 1, it **cannot** be approved for use as a MarinTrust raw material.

IUCN Red list Category

By-product material from a species listed by IUCN (the International Union for Conservation of Nature) under the Red List for the following categories shall immediately fail the assessment;

- EXTINCT (E) AND EXTINCT IN THE WILD (EW)
- CRITICALLY ENDANGERED (CR) facing an extremely high risk of extinction in the wild.
- ENDANGERED (EN) facing a very high risk of extinction in the wild.

By-product material may be used from the following categories provided that all clauses in the MarinTrust standard are passed.

- VULNERABLE (VU) facing a high risk of extinction in the wild.
- NEAR THREATENED (NT) does not qualify for above now, but is close or is likely to qualify for, a threatened category in the near future.
- LEAST CONCERN (LC) Widespread and abundant.
- DATA DEFICIENT (DD) and NOT EVALUATED (NE)

Table 3 Species Categorisation Table

| Common name | Latin name | Stock | Management | Category | IUCN Red List Category ¹ | CITES Appendix 1 ² |
|-------------|-----------------------------------|---------------------------------------------|------------|----------|-------------------------------------|-------------------------------|
| Haddock | <i>(Melanogrammus aeglefinus)</i> | ICES Subarea 4, Division 6a, Subdivision 20 | EU CFP | C | LC | No |

¹ <https://www.iucnredlist.org/>

² <https://cites.org/eng/app/appendices.php>

CATEGORY C SPECIES

In a by-product assessment, Category C species are those which are subject to a species-specific management regime and are usually targeted species in fisheries for human consumption.

Clause C1 should be completed for each Category C species. If there are no Category C species in the fishery under assessment, this section can be deleted. Where a species fails this Clause, it should be assessed as a Category D species instead.

| Species Name | | Haddock | |
|-------------------------------------------------------------------------------------------------------------------------------------------------------------------------------------------------------------------------------------------------------------------------------------------------------------------------------------------------------------------------------------------------------------------------------------------------------------------------------------------------------------------------------------------------------------------------------------------------------------------------------------------------------------------------------------------------------------------------------------------------------------------------------------------------------------------------------------------------------------------------------------------------------------------------------------------------------------------------------------------------------------------------------------------|------------------------------------------------|--------------------------------------------------------------------------------------------------------------------------------------------------------------------------------------------------------------------------------------|----------------------|
| C1 | Category C Stock Status - Minimum Requirements | | |
| | C1.1 | Fishery removals of the species in the fishery under assessment are included in the stock assessment process, OR are considered by scientific authorities to be negligible. | Pass |
| | C1.2 | The species is considered, in its most recent stock assessment, to have a biomass above the limit reference point (or proxy), OR removals by the fishery under assessment are considered by scientific authorities to be negligible. | Pass |
| | | | Clause outcome: PASS |
| <p>C1.1 Fishery removals of the species in the fishery under assessment are included in the stock assessment process, OR are considered by scientific authorities to be negligible.</p> <p>The stock is assessed through an age-based analytical assessment (TSA; ICES, 2021b) that uses catches and surveys in the model and in the forecast. Input data include commercial catches (international landings, ages from catch sampling), two survey indices: IBTS Q1 (G1022), IBTS Q3 (G2829). Maturity data are assumed fixed over time and knife-edged at age 3, while natural mortality data vary with age and over time (estimates updated in ICES [2019]). Discards are included in the assessment, data from the main fleets (covering around 68% of the landings). Below minimum size (BMS) landings, where reported, are included with discards in the assessment from 2016 onwards. Fishery removals of the species in the fishery under assessment are included in the stock assessment process, C1.1 is met.</p> | | | |
| <p>C1.2 The species is considered, in its most recent stock assessment, to have a biomass above the limit reference point (or proxy), OR removals by the fishery under assessment are considered by scientific authorities to be negligible.</p> <p>Fishing pressure on the stock is below FMSY and spawning-stock size is above MSY Btrigger, Bpa, and Blim, as shown in the figure below.</p> | | | |

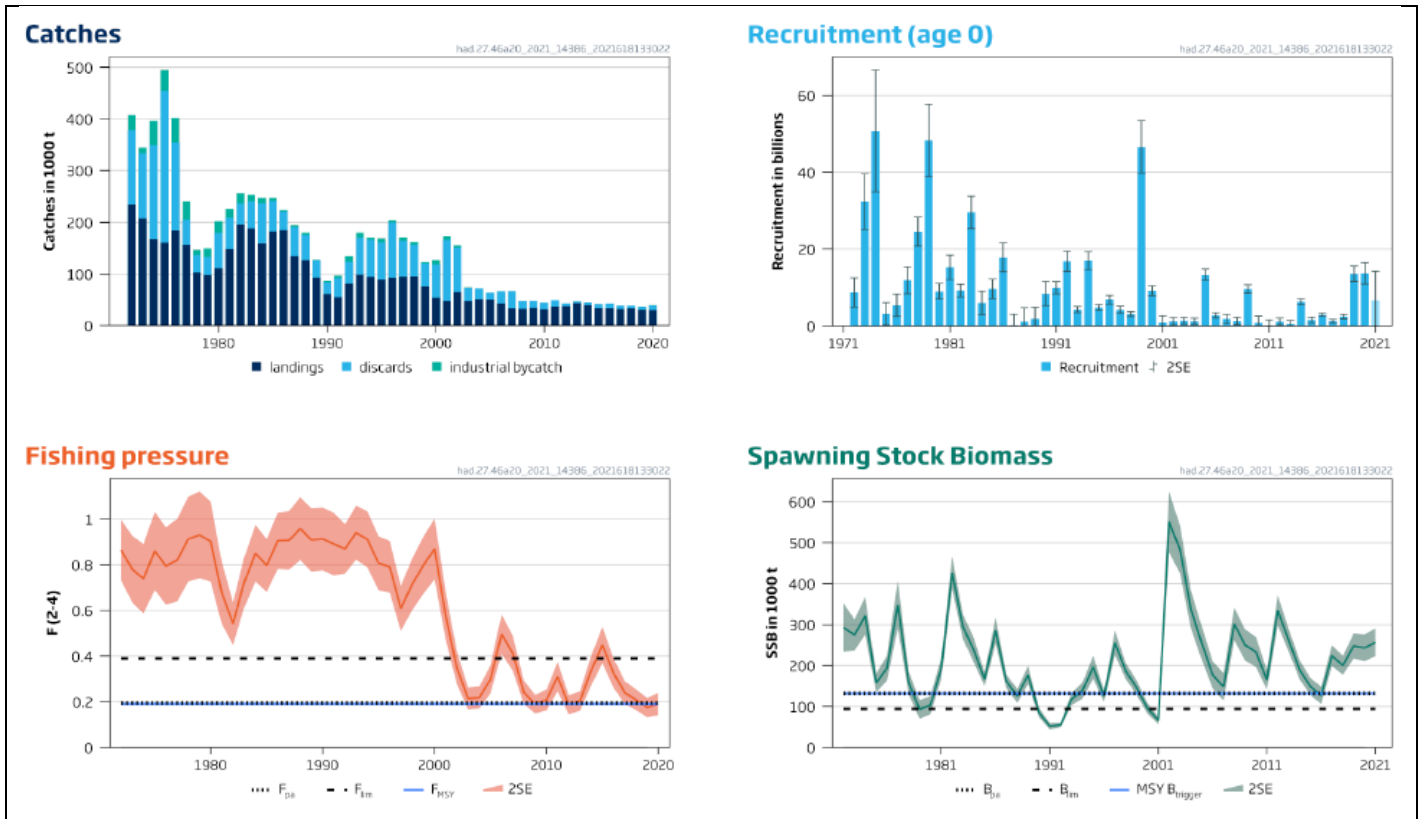


Figure 1. Haddock in Subarea 4, Division 6.a, and Subdivision 20. Summary of the stock assessment. The assumed recruitment value for 2021 is shaded in a lighter colour (ICES 2021).

The species is considered, in its most recent stock assessment, to have a biomass above the limit reference point. C1.2 is met.

References

CITES. 2022. Cites Appendix 1. <https://cites.org/eng/app/appendices.php>

Cook, R., Fernandes, P., Florin, A., Lorange, P. & Nedreaas, K. 2015. *Melanogrammus aeglefinus*. The IUCN Red List of Threatened Species 2015: e.T13045A45097487. Accessed on 22 March 2022.

ICES (2021): Haddock (*Melanogrammus aeglefinus*) in Subarea 4, Division 6.a, and Subdivision 20 (North Sea, West of Scotland, Skagerrak). ICES Advice: Recurrent Advice. Report. <https://doi.org/10.17895/ices.advice.7759>

Links

| | |
|-----------------------------------|---------------|
| MarinTrust Standard clause | 1.3.2.2 |
| FAO CCRF | 7.5.3 |
| GSSI | D.3.04, D5.01 |