



## MarinTrust Standard V2

# By-product Fishery Assessment Report Template

**MarinTrust Programme**

Unit C, Printworks

22 Amelia Street

London

SE17 3BZ

E: [standards@marin-trust.com](mailto:standards@marin-trust.com)

T: +44 2039 780 819

**Table 1 Application details and summary of the assessment outcome**

Fishery Under Assessment	Species:	Skipjack tuna, <i>Katsuwonus pelamis</i>
	Geographical area:	FAO Areas 61 & 71 Pacific Northwest & Western Central
	Country of origin of the product:	Thailand
	Stock:	Pacific Northwest & Western Central skipjack
Date	15/06/2021	
Report Code	BP109	
Assessor	Virginia Polonio	
Country of origin of the product - PASS	Thailand	
Country of origin of the product - FAIL	NA	

Application details and summary of the assessment outcome			
Name:			
Address:			
Country: Thailand		Zip:	
Tel. No.:		Fax. No.:	
Email address:		Applicant Code:	
Key Contact:		Title:	
Certification Body Details			
Name of Certification Body:		Global Trust Certification	
Assessor	Peer Reviewer	Assessment Days	Initial/Surveillance/ Re-approval
Virginia Polonio	Geraldine Criquet	0.5	Surveillance
Assessment Period	June 2021		

Scope Details	
Main Species	Skipjack tuna, <i>Katsuwonus pelamis</i>
Stock	Pacific Northwest, Western Central
Fishery Location	FAO Areas 61,71 Pacific Northwest & Western Central
Management Authority (Country/ State)	Western and Central Pacific Fisheries Commission (WCPFC)
Gear Type(s)	Longline, pole & line, and purse seine
Outcome of Assessment	
Peer Review Evaluation	Agreed with the assessor's determination
Recommendation	<b>APPROVED</b>

## Table 2. Assessment Determination

Assessment Determination
<p>If any species is categorised as Endangered or Critically Endangered on IUCN’s Red List, or if it appears in the CITES appendices, it cannot be approved for use as MARINTRUST raw material. Skipjack tuna (<i>Katsuwonus pelamis</i>) is not listed as Endangered or Critically Endangered on IUCN’s Red List, nor it is listed in CITES appendices; therefore, West Atlantic skipjack tuna is eligible for approval for use as MARIN TRUST by-product raw material.</p> <p>Skipjack in the western central Pacific Ocean are considered to comprise a single stock for assessment and management purposes; therefore, this assessment covers that stock when fished within FAO Areas 61 and 71.</p> <p>Fishery removals of the stock are considered in the WCPFC stock assessment process so the stock <b>PASSES</b> Clause C1.1.</p> <p>As of the latest assessment of stock status, managers consider the stock to be above the limit such that the stock <b>PASSES</b> Clause C1.2.</p> <p>In order to be approved, the stock under assessment must pass both Clauses C1.1 and C1.2.</p> <p>WCPO skipjack tuna pass both Clauses C1.1 and C1.2, and therefore is <b>APPROVED</b> for the production of fishmeal and fish oil under the current Marin Trust v.2.0 by-product Standard.</p>
Fishery Assessment Peer Review Comments
<p>The assessor correctly classified the WCPO skipjack tuna stock as category C, reference points are defined to assess status of the stock relative to.</p> <p>Fishery removals are included in the stock assessment process so the stock <b>PASSES</b> Clause C1.1. The skipjack stock is considered, in its most recent stock assessment, to have a biomass above the limit reference point. Therefore, the WCPO skipjack tuna stock <b>PASSES</b> Clause C1.2. Therefore, the WCPO skipjack tuna stock is approved.</p>
Notes for On-site Auditor

## Species Categorisation

**NB:** If any species is categorised as Endangered or Critically Endangered on the IUCN Red List, or if it appears in CITES Appendix 1, it **cannot** be approved for use as an MARINTRUST raw material.

### IUCN Red list Category

By-product material from a species listed by IUCN (the International Union for Conservation of Nature) under the Red List for the following categories shall immediately fail the assessment;

- EXTINCT (E) AND EXTINCT IN THE WILD (EW)
- CRITICALLY ENDANGERED (CR) facing an extremely high risk of extinction in the wild.
- ENDANGERED (EN) facing a very high risk of extinction in the wild.

By-product material may be used from the following categories provided that all clauses in the MarinTrust standard are passed.

- VULNERABLE (VU) facing a high risk of extinction in the wild.
- NEAR THREATENED (NT) does not qualify for above now, but is close or is likely to qualify for, a threatened category in the near future.
- LEAST CONCERN (LC) Widespread and abundant.
- DATA DEFICIENT (DD) and NOT EVALUATED (NE)

## Table 3 Species Categorisation Table

Common name	Latin name	Stock	Management	Category	IUCN Red List Category <sup>1</sup>	CITES Appendix 1 <sup>2</sup>
Skipjack tuna	<i>Katsuwonus pelamis</i>	Western and Central Pacific	Western and Central Pacific Fisheries Commission (WCPFC)	C	LC	No

<sup>1</sup> <https://www.iucnredlist.org/>

<sup>2</sup> <https://cites.org/eng/app/appendices.php>

## CATEGORY C SPECIES

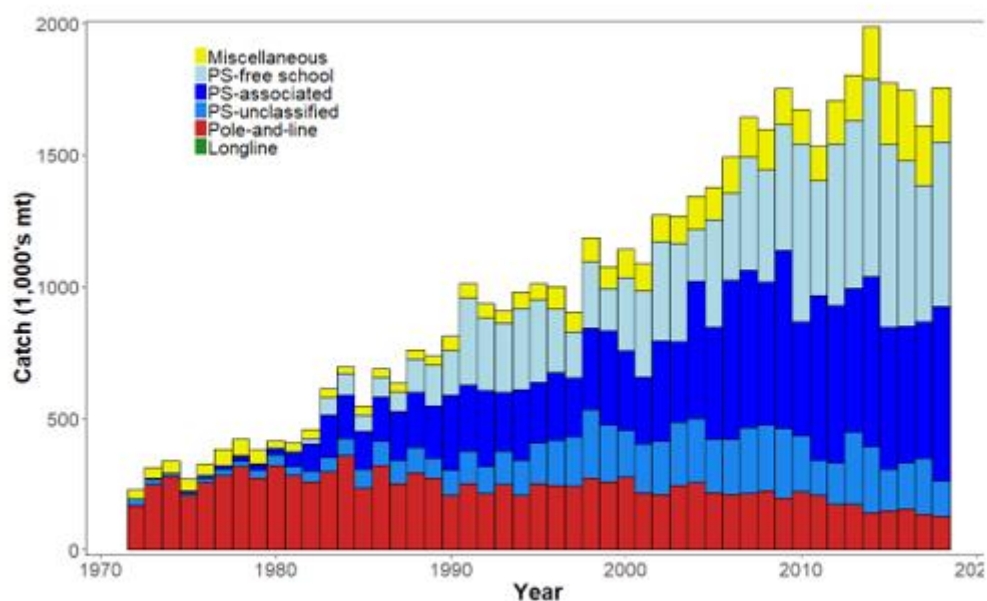
In a whole fish assessment, Category C species are those which make up less than 5% of landings, but which are subject to a species-specific management regime. In most cases this will be because they are a commercial target in a fishery other than the one under assessment.

Clause C1 should be completed for **each** Category C species. If there are no Category C species in the fishery under assessment, this section can be deleted. Where a species fails this Clause, it should be assessed as a Category D species instead.

Species Name		Skipjack tuna, <i>Katsuwonus pelamis</i>	
C1	Category C Stock Status - Minimum Requirements		
	C1.1	Fishery removals of the species in the fishery under assessment are included in the stock assessment process, OR are considered by scientific authorities to be negligible.	PASS
	C1.2	The species is considered, in its most recent stock assessment, to have a biomass above the limit reference point (or proxy), OR removals by the fishery under assessment are considered by scientific authorities to be negligible.	PASS
			Clause outcome: <b>PASS</b>

**C1.1 Fishery removals of the species in the fishery under assessment are included in the stock assessment process, OR are considered by scientific authorities to be negligible.**

Fishery removals of the stock in the fishery under assessment are included in the WCPFC stock assessment process. Total provisional catch in 2018 was 1,795,048 mt, a 10% increase from 2017 and a 1% decrease from 2013 – 2017. Given the inclusion of removals from the fishery under assessment in the WCPFC stock assessment process, **the fishery achieves a PASS against C1.1**

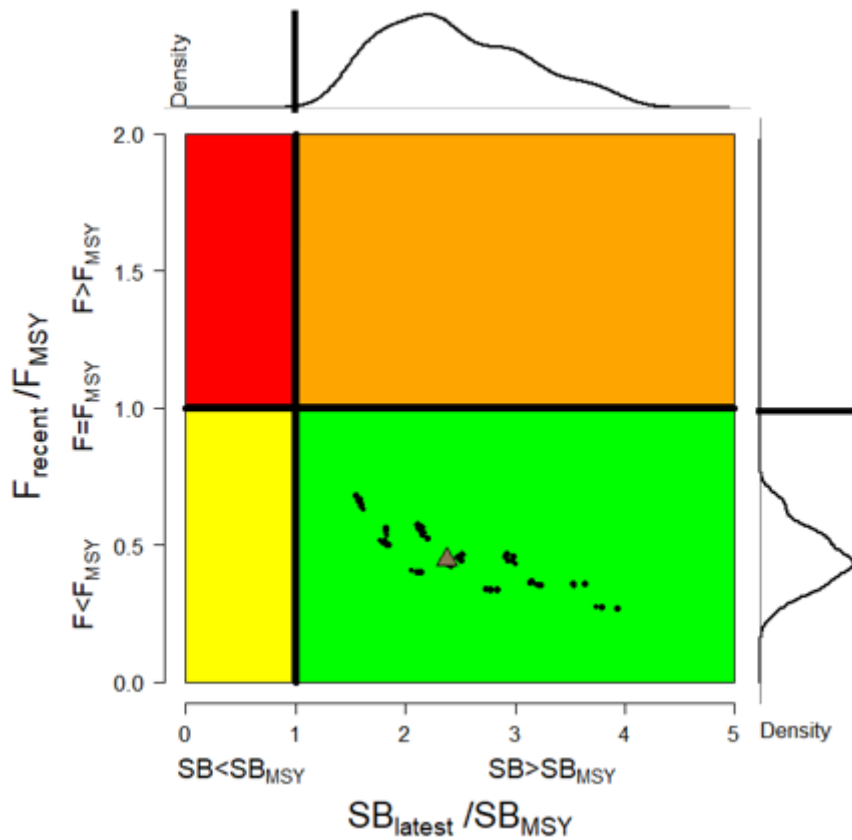


**Figure 1.** Time series of total annual catch (1000's mt) by fishing gear over the full assessment period. Source WCPFC 2019.

**C1.2 The species is considered, in its most recent stock assessment, to have a biomass above the limit reference point (or proxy), OR removals by the fishery under assessment are considered by scientific authorities to be negligible.**

Skipjack tuna is assessed and managed by the WCPFC with the most recent analyses of the status of this stock being conducted in 2019 (Vincent, Pilling and Hampton 2019). The latest available information on the stock (WCPFC, 2019) is that the probability that recent spawning biomass was below the LRP = ~0% ( $SB_{recent}/SB_{MSY} = 2.579$  and  $SB_{latest}/SB_{MSY} = 2.382$  (median)) therefore, the fishery achieves a PASS against C1.2.

Therefore, the stock is considered to have a biomass above the limit reference point, it **PASSES** Clause C1.2.



**Figure 2.** Kobe plot for the latest spawning potential (2018) summarizing the results for each of the models in the structural uncertainty grid. The plots represent estimates of stock status in terms of spawning potential depletion and fishing mortality and marginal distributions of each are presented. Brown triangle indicates the median of the estimates. The size of the circle relates to the weight of that particular model run. Source WCPFC 2019.

**References**

Collette, B., Acero, A., Amorim, A.F., Boustany, A., Canales Ramirez, C., Cardenas, G., Carpenter, K.E., de Oliveira Leite Jr., N., Di Natale, A., Fox, W., Fredou, F.L., Graves, J., Guzman-Mora, A., Viera Hazin, F.H., Juan Jorda, M., Kada, O., Minte Vera, C., Miyabe, N., Montano Cruz, R., Nelson, R., Oxenford, H., Salas, E., Schaefer, K., Serra, R., Sun, C., Teixeira Lessa, R.P., Pires Ferreira Travassos, P.E., Uozumi, Y. & Yanez, E. 2011. *Katsuwonus pelamis*. *The IUCN Red List of Threatened Species 2011*: e.T170310A6739812. <https://dx.doi.org/10.2305/IUCN.UK.2011-2.RLTS.T170310A6739812.en>.

Vincent M.T., Pilling G. M. and Hampton J. 2019. Stock assessment of skipjack tuna in the western and central Pacific Ocean. WCPFC-SC15-2019/SA-WP-05-Rev2

WCPFC-SC 2019. Fifteenth Regular Session of the Scientific Committee. Summary Report. Pohnpei, Federated States of Micronesia, 12-20 August 2019.

**Links**

MARINTRUST Standard clause	1.3.2.2
FAO CCRF	7.5.3
GSSI	D.3.04, D5.01