



MarinTrust Standard V2

By-product Fishery Assessment Report Template

MarinTrust Programme

Unit C, Printworks

22 Amelia Street

London

SE17 3BZ

E: standards@marin-trust.com

T: +44 2039 780 819

Table 1 Application details and summary of the assessment outcome

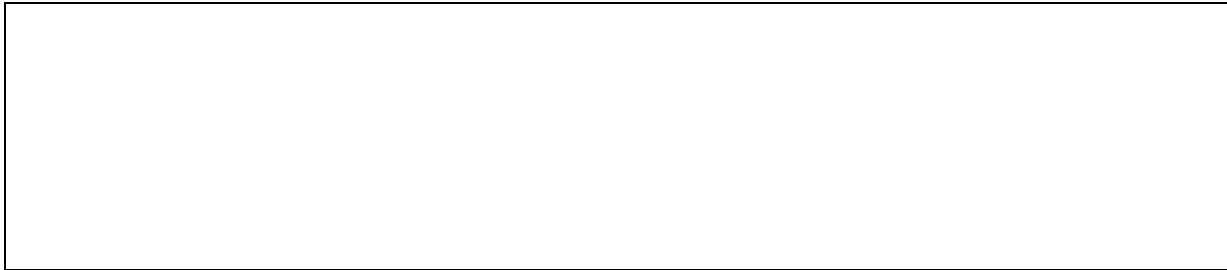
Fishery Under Assessment	Species:	Greenland halibut, <i>Reinhardtius hippoglossoides</i>
	Geographical area:	FAO Fishing Area 27 Northeast Atlantic
	Country of origin of the product:	U.K. & Ireland
	Stock:	Greenland halibut in subareas 5, 6, 12, and 14 (Iceland and Faroes grounds, West of Scotland, North of Azores, East of Greenland)
Date	10 August 2021	
Report Code	BP157	
Assessor	Vito Romito	
Country of origin of the product - PASS	Pass	
Country of origin of the product - FAIL	NA	

Application details and summary of the assessment outcome			
Name: Pelagia			
Address:			
Country: UK & Ireland		Zip:	
Tel. No.:		Fax. No.:	
Email address:		Applicant Code:	
Key Contact:		Title:	
Certification Body Details			
Name of Certification Body:		Global Trust Certification	
Assessor	Peer Reviewer	Assessment Days	Stage
Vito Romito	Geraldine Criquet	0.5	Re-Approval
Assessment Period	August 2021		

Scope Details	
Main Species	Greenland halibut, <i>Reinhardtius hippoglossoides</i>
Stock	Greenland halibut in subareas 5, 6, 12, and 14 (Iceland and Faroes grounds, West of Scotland, North of Azores, East of Greenland)
Fishery Location	Iceland and Faroes grounds, West of Scotland, North of Azores, East of Greenland
Management Authority (Country/ State)	Iceland Ministry of Fisheries and Agriculture, Faroese Ministry of Fisheries, Greenland Ministry for Fisheries and Hunting, UK Marine Management Organisation.
Gear Type(s)	All gear types
Outcome of Assessment	
Peer Review Evaluation	Agree with the assessor's recommendation of approval.
Recommendation	APPROVED

Table 2. Assessment Determination

Assessment Determination
<p>Greenland halibut (<i>Reinhardtius hippoglossoides</i>) is not is categorised as Endangered or Critically Endangered on the IUCN Red list nor is listed in Appendix 1 of CITES.</p> <p>Greenland halibut is not managed under a management plan in subareas 5, 6, 12, and 14 (Iceland and Faroes grounds, West of Scotland, North of Azores, East of Greenland). The stock is managed using a TAC in Iceland and Greenland. In the past 5 years catches have been above the TAC by up to 10% in 3 of 5 years. ICES advised in 2021 that when the MSY approach is applied, catches in 2022 should be no more than 26,650 tonnes.</p> <p>ICES assessed that fishing pressure on the stock is below FMSY and Flim, and spawning stock size is above MSY Btrigger and Blim.</p> <p>As the stock passes both Clause C1.1 and C1.2, the by-product covered by this report is recommended for APPROVAL for the production of fishmeal and fish oil under the current MarinTrust RS v 2.0 by-product standard.</p>
Fishery Assessment Peer Review Comments
<p>The assessor correctly classified Greenland halibut in subareas 5, 6, 12, and 14 (Iceland and Faroes grounds, West of Scotland, North of Azores, East of Greenland) as category C, reference points are defined to assess status of the stocks relative to.</p> <p>Fishery removals are included in the stock assessment process so the stock PASSES Clause C1.1. The Greenland halibut stock is considered, in its most recent stock assessment, to have a biomass above the limit reference point. Therefore, it PASSES Clause C1.2.</p> <p>Therefore, Greenland halibut in subareas 5, 6, 12, and 14 (Iceland and Faroes grounds, West of Scotland, North of Azores, East of Greenland) is APPROVED.</p>
Notes for On-site Auditor



Species Categorisation

NB: If any species is categorised as Endangered or Critically Endangered on the IUCN Red List, or if it appears in CITES Appendix 1, it **cannot** be approved for use as an MARINTRUST raw material.

IUCN Red list Category

By-product material from a species listed by IUCN (the International Union for Conservation of Nature) under the Red List for the following categories shall immediately fail the assessment;

- EXTINCT (E) AND EXTINCT IN THE WILD (EW)
- CRITICALLY ENDANGERED (CR) facing an extremely high risk of extinction in the wild.
- ENDANGERED (EN) facing a very high risk of extinction in the wild.

By-product material may be used from the following categories provided that all clauses in the MarinTrust standard are passed.

- VULNERABLE (VU) facing a high risk of extinction in the wild.
- NEAR THREATENED (NT) does not qualify for above now, but is close or is likely to qualify for, a threatened category in the near future.
- LEAST CONCERN (LC) Widespread and abundant.
- DATA DEFICIENT (DD) and NOT EVALUATED (NE)

Table 3 Species Categorisation Table

Common name	Latin name	Stock	Management	Category	IUCN Red List Category ¹	CITES Appendix 1 ²
Greenland halibut	<i>Reinhardtius hippoglossoides</i>	Greenland halibut (<i>Reinhardtius hippoglossoides</i>) in subareas 5, 6, 12, and 14 (Iceland and Faroes grounds, West of Scotland, North of Azores, East of Greenland)	Iceland Ministry of Fisheries and Agriculture, Faroese Ministry of Fisheries, Greenland Ministry for Fisheries and Hunting, UK Marine Management Organisation.	C	No	No

¹ <https://www.iucnredlist.org/>

² <https://cites.org/eng/app/appendices.php>

CATEGORY C SPECIES

In a whole fish assessment, Category C species are those which make up less than 5% of landings, but which are subject to a species-specific management regime. In most cases this will be because they are a commercial target in a fishery other than the one under assessment.

Clause C1 should be completed for **each** Category C species. If there are no Category C species in the fishery under assessment, this section can be deleted. Where a species fails this Clause, it should be assessed as a Category D species instead.

Species Name		Greenland halibut	
C1	Category C Stock Status - Minimum Requirements		
	C1.1	Fishery removals of the species in the fishery under assessment are included in the stock assessment process, OR are considered by scientific authorities to be negligible.	Met
	C1.2	The species is considered, in its most recent stock assessment, to have a biomass above the limit reference point (or proxy), OR removals by the fishery under assessment are considered by scientific authorities to be negligible.	Met
Clause outcome:			Met

C1.1 Fishery removals of the species in the fishery under assessment are included in the stock assessment process.

The stock is distributed in subareas 5, 6, 12, and 14 (Iceland and Faroes grounds, West of Scotland, North of Azores, East of Greenland), as shown in the figure below.

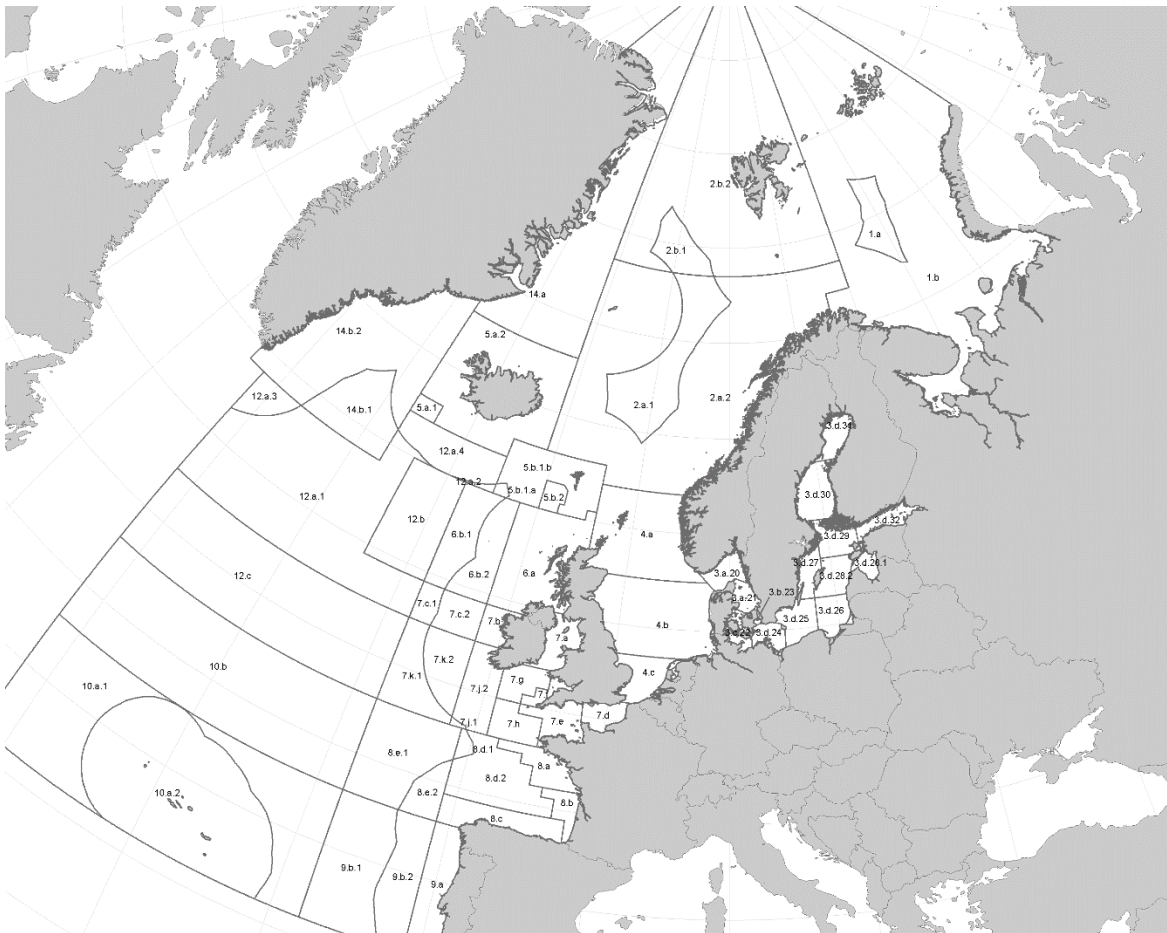


Figure 1. ICES Subareas 5, 6, 12, and 14.

The stock is assessed using a probabilistic (Bayesian) version of a surplus production model that uses catches in the model and in the forecast (ICES, 2021b) and that include commercial catches (international landings); one combined survey index (GRL-deep, G5943, 1998–2016, and the Icelandic bottom trawl survey - Autumn [IS-SMH; G4493] since 1996); and one commercial index (Icelandic trawlers [since 1985]). Discards are considered negligible. C1.1. is met.

C1.2 The species is considered, in its most recent stock assessment, to have a biomass above the limit reference point.

The stock is below FMSY and Flim, and spawning stock size is above MSY Btrigger and Blim. C1.2. is met.

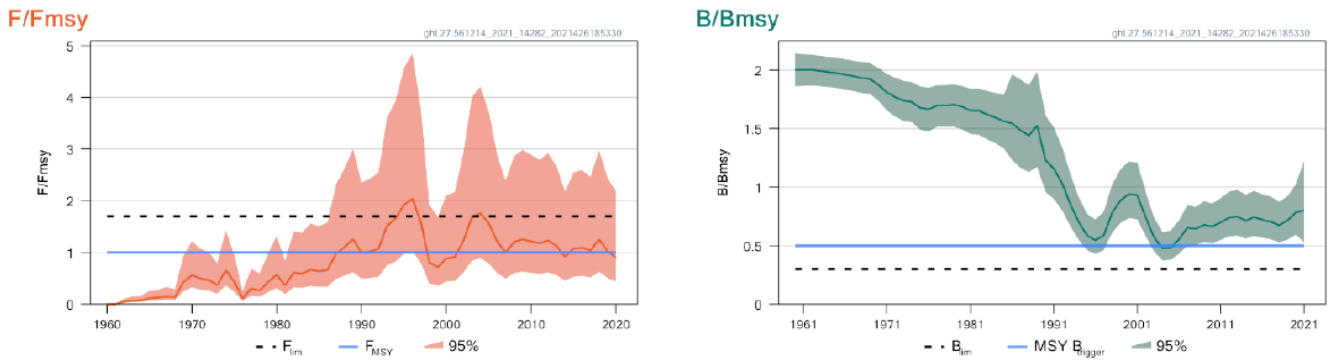


Figure 2. Greenland halibut in subareas 5, 6, 12, and 14. Summary of the stock assessment. Fishing mortality relative to FMSY (left) and biomass relative to BMSY (right).

References

ICES. 2021. Greenland halibut (*Reinhardtius hippoglossoides*) in subareas 5, 6, 12, and 14 (Iceland and Faroes grounds, West of Scotland, North of Azores, East of Greenland). In Report of the ICES Advisory Committee, 2021. ICES Advice 2021, ghl.27.561214, <https://doi.org/10.17895/ices.advice.7756>.

Munroe, T., Costa, M., Nielsen, J., Herrera, J. & de Sola, L. 2015. *Reinhardtius hippoglossoides*. The IUCN Red List of Threatened Species 2015: e.T18227054A45790364. Downloaded on 10 August 2021.

Links

MARINTRUST Standard clause	1.3.2.2
FAO CCRF	7.5.3
GSSI	D.3.04, D5.01