



## MarinTrust Standard V2

# By-product Fishery Assessment Report Template

**MarinTrust Programme**

Unit C, Printworks

22 Amelia Street

London

SE17 3BZ

E: [standards@marin-trust.com](mailto:standards@marin-trust.com)

T: +44 2039 780 819

**Table 1 Application details and summary of the assessment outcome**

Fishery Under Assessment	Species:	Saithe ( <i>Pollachius virens</i> )
	Geographical area:	FAO Area 27 Northeast Atlantic
	Country of origin of the product:	France
	Stock:	Saithe in ICES Division 5.a (Iceland grounds)
Date	20 August 2021	
Report Code	BP172	
Assessor	Geraldine Criquet	
Country of origin of the product - PASS	France	
Country of origin of the product - FAIL	Not applicable	

Application details and summary of the assessment outcome			
Name: Copalis			
Address:			
Country: France		Zip:	
Tel. No.:		Fax. No.:	
Email address:		Applicant Code:	
Key Contact:		Title:	
Certification Body Details			
Name of Certification Body:		Global Trust Certification	
Assessor	Peer Reviewer	Assessment Days	Initial/Surveillance/Re-approval
Geraldine Criquet	Virginia Polonio	0.5	Initial
Assessment Period	To August 2021		

Scope Details	
Main Species	Saithe ( <i>Pollachius virens</i> )
Stock	Saithe in ICES Division 5.a (Iceland grounds)
Fishery Location	FAO Area 27 Northeast Atlantic
Management Authority (Country/ State)	European Union Common Fisheries Policy / Icelandic Ministry of Industries and Innovation / France Direction des pêches maritimes et de l'aquaculture (DPMA)
Gear Type(s)	Bottom trawl (87%), gillnets (5%) and other (8%)
Outcome of Assessment	
Peer Review Evaluation	Agree with assessor's determination
Recommendation	APPROVED

**Table 2. Assessment Determination**

Assessment Determination
<p>If a species is categorised as Endangered or Critically Endangered on IUCN’s Red List, or if it appears in the CITES appendices, it cannot be approved for use as MarinTrust RS raw material. Saithe (<i>Pollachius virens</i>) is not categorised as Endangered or Critically Endangered on the IUCN’s Red List and it does not appear in the CITES appendices. Therefore, saithe is eligible for approval for use as MarinTrust RS by-product raw material.</p> <p>There is a management plan for Icelandic saithe aiming at providing long-term maximum sustainable yield. The plan is considered to be precautionary and defines how the TAC for a fishing year is calculated. The stock is subject to a specific management regime and reference points are defined. Therefore, it is classified as Category C.</p> <p>Fishery removals of the saithe stock are considered in the stock assessment processes such that <b>the fishery PASSES Clause C1.1.</b></p> <p>As per the last stock assessment, the spawning stock biomass is above the limit reference point. Therefore, <b>the fishery PASSES Clause C1.2.</b></p> <p>As the fishery passes both Clause C1.1 and C1.2, saithe in Division 5.a (Icelandic grounds) is recommended for <b>APPROVAL</b> for the production of fishmeal and fish oil under the current MarinTrust RS v 2.0 by-product standard.</p>
Fishery Assessment Peer Review Comments
<p>The stock has been correctly classified as there is a management plan in place. Removals have been considered in the stock assessment and the SSB is above reference points.</p> <p>Therefore, saithe in Division 5.a (Icelandic grounds) is approved for the production of fishmeal and fish oil under the current MarinTrust RS v 2.0 by-product standard.</p> <p>PR agrees with the assessor’s determination</p>
Notes for On-site Auditor

## Species Categorisation

**NB:** If any species is categorised as Endangered or Critically Endangered on the IUCN Red List, or if it appears in CITES Appendix 1, it **cannot** be approved for use as an MARINTRUST raw material.

### IUCN Redlist Category

By-product material from a species listed by IUCN (the International Union for Conservation of Nature) under the Red List for the following categories shall immediately fail the assessment;

- EXTINCT (E) AND EXTINCT IN THE WILD (EW)
- CRITICALLY ENDANGERED (CR) facing an extremely high risk of extinction in the wild.
- ENDANGERED (EN) facing a very high risk of extinction in the wild.

By-product material may be used from the following categories provided that all clauses in the MarinTrust standard are passed.

- VULNERABLE (VU) facing a high risk of extinction in the wild.
- NEAR THREATENED (NT) does not qualify for above now, but is close or is likely to qualify for, a threatened category in the near future.
- LEAST CONCERN (LC) Widespread and abundant.
- DATA DEFICIENT (DD) and NOT EVALUATED (NE)

**Table 3 Species Categorisation Table**

Common name	Latin name	Stock	Management	Category	IUCN Red List Category <sup>1</sup>	CITES Appendix 1 <sup>2</sup>
Saithe	<i>Pollachius virens</i>	Saithe in ICES Division 5.a (Icelandic grounds)	EU Icelandic Ministry of Industries and Innovation France DPMA	C	Least Concern (LC)	No

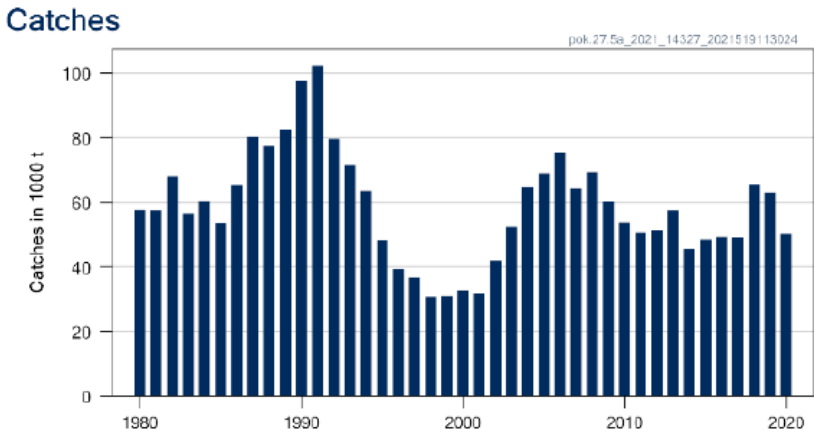
<sup>1</sup> <https://www.iucnredlist.org/>

<sup>2</sup> <https://cites.org/eng/app/appendices.php>

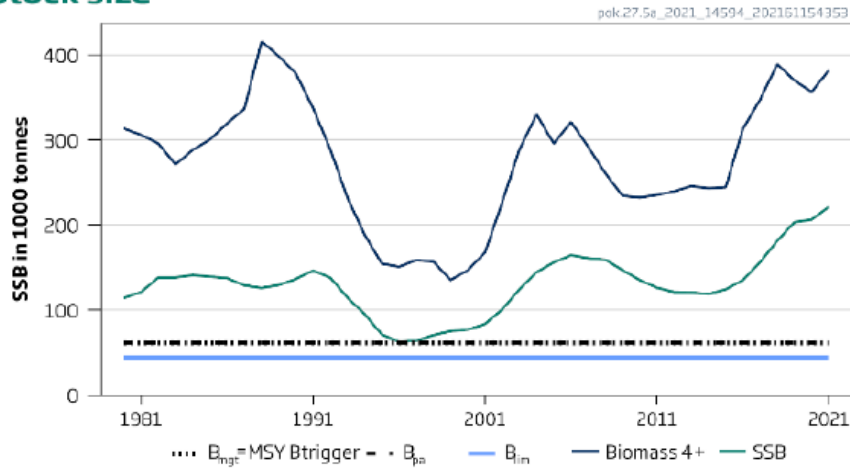
## CATEGORY C SPECIES

In a whole fish assessment, Category C species are those which make up less than 5% of landings, but which are subject to a species-specific management regime. In most cases this will be because they are a commercial target in a fishery other than the one under assessment.

Clause C1 should be completed for **each** Category C species. If there are no Category C species in the fishery under assessment, this section can be deleted. Where a species fails this Clause, it may be assessed as a Category D species instead, EXCEPT if there is evidence that it is currently below the limit reference point.

<b>Species Name</b>		Saithe, <i>Pollachius virens</i>	
<b>C1</b>	<b>Category C Stock Status - Minimum Requirements</b>		
	<b>C1.1</b>	Fishery removals of the species in the fishery under assessment are included in the stock assessment process, OR are considered by scientific authorities to be negligible.	PASS
	<b>C1.2</b>	The species is considered, in its most recent stock assessment, to have a biomass above the limit reference point (or proxy), OR removals by the fishery under assessment are considered by scientific authorities to be negligible.	PASS
			<b>Clause outcome:</b> PASS
<p><b>C1.1 Fishery removals of the species in the fishery under assessment are included in the stock assessment process, OR are considered by scientific authorities to be negligible.</b></p> <p>Fishery removals of the stock are included in the stock assessment process. Catches are presented in Figure 1.</p> <div style="text-align: center;">  </div> <p><b>Figure 1.</b> Saithe in Division 5.a. Catches.</p> <p>Given the inclusion of removals from the fishery under assessment in the stock assessment process, <b>the fishery achieves a PASS against C1.1.</b></p>			
<p><b>C1.2 The species is considered, in its most recent stock assessment, to have a biomass above the limit reference point (or proxy), OR removals by the fishery under assessment are considered by scientific authorities to be negligible.</b></p> <p>The most recent ICES advice showing the outcome of the stock assessment was published in June 2021. The spawning stock size is above MSY <math>B_{trigger}</math>, <math>B_{pa}</math> and <math>B_{lim}</math> (Figure 2). The stock is considered, in its most recent stock assessment, to have a biomass above its limit reference point (or proxy) such that <b>the fishery achieves a PASS against C1.2 for this stock.</b></p>			

### Stock size



**Figure 2.** Saithe in Division 5.a. Summary of the stock assessment.

#### References

Cook, R., Fernandes, P., Florin, A., Lorance, P. & Nedreaas, K. 2015. *Pollachius virens*. *The IUCN Red List of Threatened Species* 2015: e.T190304A45098360. Downloaded on 20 August 2021.

<https://www.iucnredlist.org/species/190304/45098360>

ICES. 2021. Saithe (*Pollachius virens*) in Division 5.a (Iceland grounds). *In* Report of the ICES Advisory Committee, 2021. ICES Advice 2021, pok.27.5a,

<https://doi.org/10.17895/ices.advice.7828>.

<https://www.ices.dk/sites/pub/Publication%20Reports/Advice/2021/2021/pok.27.5a.pdf>

#### Links

MARINTRUST Standard clause	1.3.2.2
FAO CCRF	7.5.3
GSSI	D.3.04, D5.01