



## MarinTrust Standard V2

# By-product Fishery Assessment Report Template

**MarinTrust Programme**

Unit C, Printworks

22 Amelia Street

London

SE17 3BZ

E: [standards@marin-trust.com](mailto:standards@marin-trust.com)

T: +44 2039 780 819

**Table 1 Application details and summary of the assessment outcome**

Fishery Under Assessment	Species:	Dover sole ( <i>Solea solea</i> )
	Geographical area:	FAO Area 27 North East Atlantic
	Country of origin of the product:	France
	Stock:	Sole in Subarea 4 (North Sea)
Date	8 November 2021	
Report Code	BP 228	
Assessor	Geraldine Criquet	
Country of origin of the product - PASS	France	
Country of origin of the product - FAIL	NA	

Application details and summary of the assessment outcome			
Name: Bioceval SAS			
Address:			
Country: France		Zip:	
Tel. No.:		Fax. No.:	
Email address:		Applicant Code:	
Key Contact:		Title:	
Certification Body Details			
Name of Certification Body:		Global Trust Certification	
Assessor	Peer Reviewer	Assessment Days	Initial/Surveillance/ Re-approval
Geraldine Criquet	Virginia Polonio	0.5	Surveillance 2
Assessment Period	To November 2021		

Scope Details	
Main Species	Dover sole ( <i>Solea solea</i> )
Stock	Sole in Subarea 4 (North Sea)
Fishery Location	FAO Area 27 Northeast Atlantic Ocean
Management Authority (Country/ State)	European Union / France Direction des Pêches Maritimes et de l'Aquaculture
Gear Type(s)	Trawl, gillnet, trammel net
Peer Review Evaluation	Agrees with assessor's determination
Recommendation	<b>APPROVED</b>

**Table 2. Assessment Determination**

Assessment Determination
<p>If any species is categorised as Endangered or Critically Endangered on IUCN’s Red List, or if it appears in the CITES appendices, it cannot be approved for use as Marin Trust raw material. Dover sole (<i>Solea solea</i>) is neither listed as Endangered or Critically Endangered on IUCN’s Red List, nor listed in CITES appendices; therefore, Dover sole is eligible for approval for use as Marin Trust by-product raw material.</p> <p>The North Sea Dover sole stock is managed through the EU Multiannual plan (MAP) for the North Sea adopted in 2018 and reference points are defined for the stock, therefore it was assessed under category C.</p> <p>Fishery removals are included in the stock assessment process, it PASSES Clause C1.1. The stock is considered, in its most recent stock assessment, to have a biomass above the limit reference point, it PASSES Clause C1.2.</p> <p>Therefore, Dover sole in ICES in Subareas 4 (North Sea) is <b>APPROVED</b> for the production of fishmeal and fish oil under the current Marin Trust v 2.0 by-products.</p>
Fishery Assessment Peer Review Comments
<p>The stock has been identified correctly as there is species specific management plan for this stock.</p> <p>Fisheries removals are considered in the stock assessment and biomass is below limits. Therefore, the stock passes both clauses in category C and it is recommended for approval.</p>
Notes for On-site Auditor

## Species Categorisation

**NB:** If any species is categorised as Endangered or Critically Endangered on the IUCN Red List, or if it appears in CITES Appendix 1, it **cannot** be approved for use as an MARINTRUST raw material.

### IUCN Redlist Category

By-product material from a species listed by IUCN (the International Union for Conservation of Nature) under the Red List for the following categories shall immediately fail the assessment;

- EXTINCT (E) AND EXTINCT IN THE WILD (EW)
- CRITICALLY ENDANGERED (CR) facing an extremely high risk of extinction in the wild.
- ENDANGERED (EN) facing a very high risk of extinction in the wild.

By-product material may be used from the following categories provided that all clauses in the MarinTrust standard are passed.

- VULNERABLE (VU) facing a high risk of extinction in the wild.
- NEAR THREATENED (NT) does not qualify for above now, but is close or is likely to qualify for, a threatened category in the near future.
- LEAST CONCERN (LC) Widespread and abundant.
- DATA DEFICIENT (DD) and NOT EVALUATED (NE)

## Table 3 Species Categorisation Table

Common name	Latin name	Stock	Management	Category	IUCN Red List Category <sup>1</sup>	CITES Appendix 1 <sup>2</sup>
Dover sole	<i>Solea solea</i>	Sole in ICES in Subarea 4 (North Sea)	European Union / France Direction des Pêches Maritimes et de l'Aquaculture	C	LC	No

<sup>1</sup> <https://www.iucnredlist.org/>

<sup>2</sup> <https://cites.org/eng/app/appendices.php>

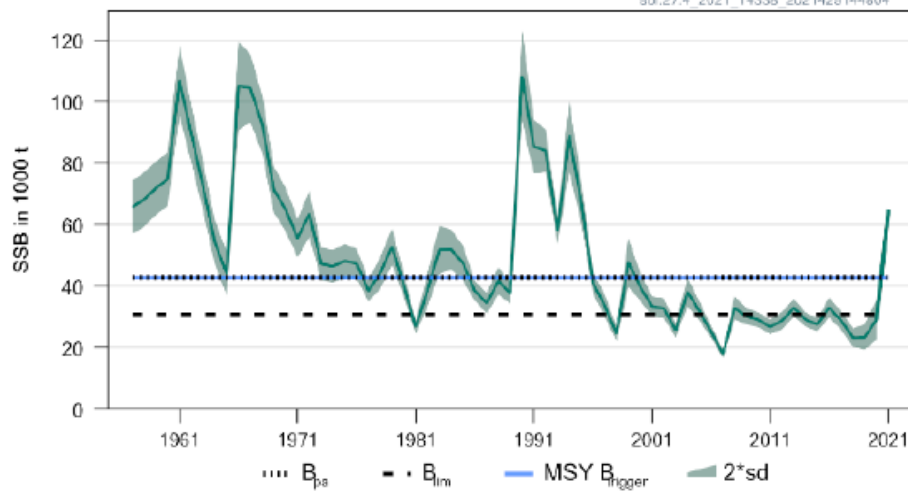
## CATEGORY C SPECIES

In a whole fish assessment, Category C species are those which make up less than 5% of landings, but which are subject to a species-specific management regime. In most cases this will be because they are a commercial target in a fishery other than the one under assessment.

Clause C1 should be completed for **each** Category C species. If there are no Category C species in the fishery under assessment, this section can be deleted. Where a species fails this Clause, it should be assessed as a Category D species instead.

Species Name		Dover sole ( <i>Solea solea</i> )
C1	Category C Stock Status - Minimum Requirements	
	C1.1	Fishery removals of the species in the fishery under assessment are included in the stock assessment process, OR are considered by scientific authorities to be negligible. Yes
	C1.2	The species is considered, in its most recent stock assessment, to have a biomass above the limit reference point (or proxy), OR removals by the fishery under assessment are considered by scientific authorities to be negligible. Yes
		Clause outcome: PASS
<p><b>C1.1 Fishery removals of the species in the fishery under assessment are included in the stock assessment process, OR are considered by scientific authorities to be negligible.</b></p> <p>The stock assessment type is an age-based analytical assessment and input data include commercial catches (age frequency from catch sampling). Catches are presented in Figure 1. Therefore, fishery removals of the stock, including from the fishery under assessment, are included in the stock assessment process, it <b>PASSES Clause C1.1</b></p> <div style="text-align: center;"> </div> <p><b>Figure 1.</b> Sole in ICES in Subarea 4. Long-term trends in catches (landings and discards). ICES 2021</p>		
<p><b>C1.2 The species is considered, in its most recent stock assessment, to have a biomass above the limit reference point (or proxy), OR removals by the fishery under assessment are considered by scientific authorities to be negligible.</b></p> <p>The spawning-stock size is above <math>MSY B_{trigger}</math>, <math>B_{pa}</math> and <math>B_{lim}</math> (Figure 2). Therefore, the stock is considered, in its most recent stock assessment, to have a biomass above the limit reference point, <b>C1.2 is met.</b></p>		

## Spawning Stock Biomass



**Figure 2.** Sole in ICES in Subarea 4. Summary of the stock assessment. Spawning stock biomass. ICES 2021

### References

ICES. 2021. Sole (*Solea solea*) in Subarea 4 (North Sea). In Report of the ICES Advisory Committee, 2021. ICES Advice 2021, sol.27.4. <https://doi.org/10.17895/ices.advice.7859>.

<https://www.ices.dk/sites/pub/Publication%20Reports/Advice/2021/2021/sol.27.4.pdf>

Monroe, T., Keskin, Ç., Costa, M. & Rijnsdorp, A.D. 2015. *Solea solea* (errata version published in 2016). *The IUCN Red List of Threatened Species 2015*: e.T198739A87698320. Downloaded on 08 November 2021.

### Links

MARINTRUST Standard clause	1.3.2.2
FAO CCRF	7.5.3
GSSI	D.3.04, D5.01