



MarinTrust Standard V2

By-product Fishery Assessment Report Template

MarinTrust Programme

Unit C, Printworks

22 Amelia Street

London

SE17 3BZ

E: standards@marin-trust.com

T: +44 2039 780 819

Table 1 Application details and summary of the assessment outcome

Fishery Under Assessment	Species:	Saithe (<i>Pollachius virens</i>)
	Geographical area:	FAO Area 27 Northeast Atlantic
	Country of origin of the product:	UK & Ireland
	Stock:	Saithe in Subareas 4 and 6, and in Division 3.a (North Sea, Rockall and West Scotland, Skagerrak and Kattegat)
Date	13/12 2021	
Report Code	BP258	
Assessor	Virginia Polonio	
Country of origin of the product - PASS	UK & Ireland	
Country of origin of the product - FAIL	Not applicable	

Application details and summary of the assessment outcome			
Name: Pelagia			
Address:			
Country: UK & Ireland		Zip:	
Tel. No.:		Fax. No.:	
Email address:		Applicant Code:	
Key Contact:		Title:	
Certification Body Details			
Name of Certification Body:		Global Trust Certification	
Assessor	Peer Reviewer	Assessment Days	Initial/Surveillance/ Re-approval
Virginia Polonio	Vito Romito	0.5	Surveillance 1
Assessment Period	To December 2021		

Scope Details	
Main Species	Saithe (<i>Pollachius virens</i>)
Stock	Saithe in Subareas 4 and 6, and in Division 3.a (North Sea, Rockall and West Scotland, Skagerrak and Kattegat)
Fishery Location	FAO Area 27 Northeast Atlantic
Management Authority (Country/ State)	European Union Common Fisheries Policy / UK and Ireland Fisheries departments
Gear Type(s)	Bottom trawl (84%), gillnets (6%) and other (10%)
Outcome of Assessment	
Peer Review Evaluation	Agree with assessor's determination
Recommendation	APPROVED

Table 2. Assessment Determination

Assessment Determination
<p>If a species is categorised as Endangered or Critically Endangered on IUCN’s Red List, or if it appears in the CITES appendices, it cannot be approved for use as MarinTrust RS raw material. Saithe (<i>Pollachius virens</i>) is not categorised as Endangered or Critically Endangered on the IUCN’s Red List and it does not appear in the CITES appendices. Therefore, saithe is eligible for approval for use as MarinTrust RS by-product raw material.</p> <p>An EU multiannual plan (MAP) has been agreed by the EU for this stock. The stock is subject to a specific management regime and reference points are defined. Therefore, it is classified as Category C.</p> <p>Fishery removals of the saithe stock are considered in the stock assessment processes such that the fishery PASSES Clause C1.1.</p> <p>As per the last stock assessment, the spawning stock biomass is above the limit reference point. Therefore, the fishery PASSES Clause C1.2.</p> <p>As the fishery passes both Clause C1.1 and C1.2, saithe in Subareas 4 and 6, and in Division 3.a (North Sea, Rockall and West Scotland, Skagerrak and Kattegat) is recommended for APPROVAL for the production of fishmeal and fish oil under the current MarinTrust RS v 2.0 by-product standard.</p>
Fishery Assessment Peer Review Comments
<p>The peer-review agrees with the assessor’s determination as the stock has been correctly classified as category C. Fishery removals have been considered in the stock assessment and the stock is considered, in its most recent stock assessment, to have a biomass below MSY Btrigger and between Bpa and Blim (i.e. above limit reference point). .</p> <p>Therefore, saithe in Subareas 4 and 6, and in Division 3.a (North Sea, Rockall and West Scotland, Skagerrak and Kattegat) is approved for the production of fishmeal and fish oil under the current MarinTrust RS v 2.0 by-product standard.</p>
Notes for On-site Auditor

Species Categorisation

NB: If any species is categorised as Endangered or Critically Endangered on the IUCN Red List, or if it appears in CITES Appendix 1, it **cannot** be approved for use as an MARINTRUST raw material.

IUCN Redlist Category

By-product material from a species listed by IUCN (the International Union for Conservation of Nature) under the Red List for the following categories shall immediately fail the assessment;

- EXTINCT (E) AND EXTINCT IN THE WILD (EW)
- CRITICALLY ENDANGERED (CR) facing an extremely high risk of extinction in the wild.
- ENDANGERED (EN) facing a very high risk of extinction in the wild.

By-product material may be used from the following categories provided that all clauses in the MarinTrust standard are passed.

- VULNERABLE (VU) facing a high risk of extinction in the wild.
- NEAR THREATENED (NT) does not qualify for above now, but is close or is likely to qualify for, a threatened category in the near future.
- LEAST CONCERN (LC) Widespread and abundant.
- DATA DEFICIENT (DD) and NOT EVALUATED (NE)

Table 3 Species Categorisation Table

Common name	Latin name	Stock	Management	Category	IUCN Red List Category ¹	CITES Appendix 1 ²
Saithe	<i>Pollachius virens</i>	Saithe in Subareas 4 and 6, and in Division 3.a (North Sea, Rockall and West Scotland, Skagerrak and Kattegat)	EU UK and Ireland	C	Least Concern (LC)	No

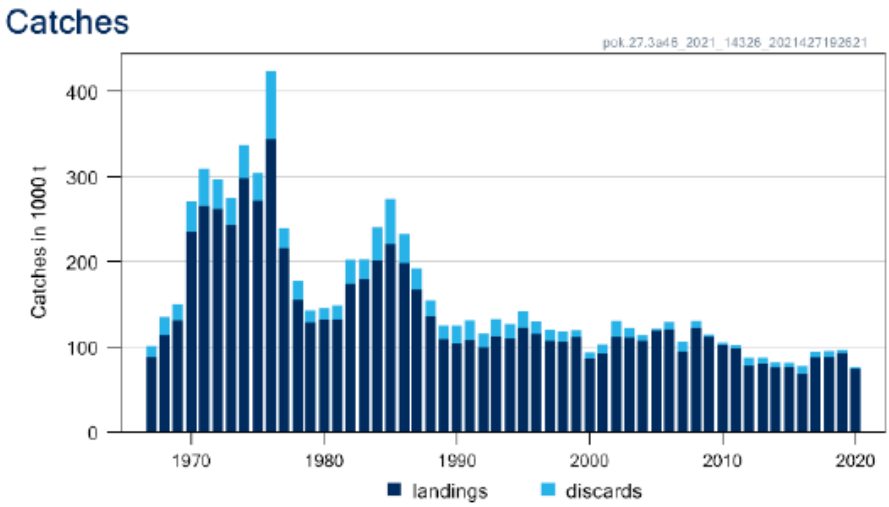
¹ <https://www.iucnredlist.org/>

² <https://cites.org/eng/app/appendices.php>

CATEGORY C SPECIES

In a whole fish assessment, Category C species are those which make up less than 5% of landings, but which are subject to a species-specific management regime. In most cases this will be because they are a commercial target in a fishery other than the one under assessment.

Clause C1 should be completed for **each** Category C species. If there are no Category C species in the fishery under assessment, this section can be deleted. Where a species fails this Clause, it may be assessed as a Category D species instead, EXCEPT if there is evidence that it is currently below the limit reference point.

Species Name		Saithe, <i>Pollachius virens</i>	
C1	Category C Stock Status - Minimum Requirements		
	C1.1	Fishery removals of the species in the fishery under assessment are included in the stock assessment process, OR are considered by scientific authorities to be negligible.	PASS
	C1.2	The species is considered, in its most recent stock assessment, to have a biomass above the limit reference point (or proxy), OR removals by the fishery under assessment are considered by scientific authorities to be negligible.	PASS
Clause outcome:			PASS
<p>C1.1 Fishery removals of the species in the fishery under assessment are included in the stock assessment process, OR are considered by scientific authorities to be negligible.</p> <p>Fishery removals of the stock are included in the stock assessment process. The assessment is type is an age-based analytical SAM that uses commercial catches in the model and in the forecast: international landings, BMS landings, discards and age frequencies from catch sampling. Catches are presented in Figure 1.</p> <div style="text-align: center;">  <p>Catches</p> <p>pok.27.3a48 2021 14326 2021427192621</p> <p>landings discards</p> </div> <p>Figure 1. Saithe in subareas 4 and 6, and in Division 3.a. Landings and discards are for ages 3–10+ only, as used in the assessment.</p> <p>Given the inclusion of removals from the fishery under assessment in the stock assessment process, the fishery achieves a PASS against C1.1.</p>			
<p>C1.2 The species is considered, in its most recent stock assessment, to have a biomass above the limit reference point (or proxy), OR removals by the fishery under assessment are considered by scientific authorities to be negligible.</p> <p>The most recent ICES advice showing the outcome of the stock assessment was published in June 2021. The Spawning stock biomass is below MSY $B_{trigger}$ and between B_{pa} and B_{lim} (Figure 2). The stock is considered, in its most recent stock assessment, to have a biomass above its limit reference point (or proxy) such that the fishery achieves a PASS against C1.2 for this stock.</p>			

Spawning Stock Biomass

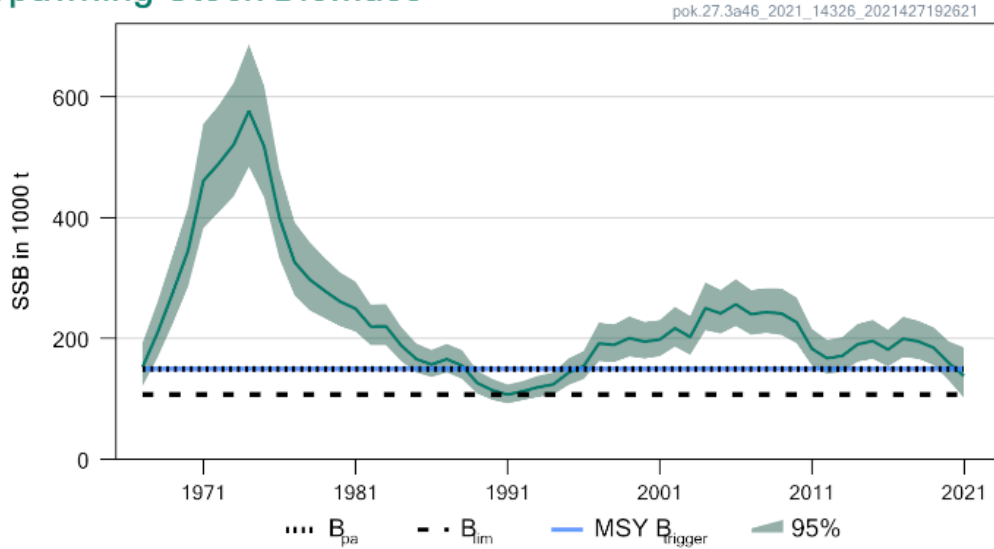


Figure 2. Saithe in subareas 4 and 6, and in Division 3.a. Summary of the stock assessment.

References

Cook, R., Fernandes, P., Florin, A., Lorange, P. & Nedreaas, K. 2015. *Pollachius virens*. *The IUCN Red List of Threatened Species* 2015: e.T190304A45098360. Downloaded on 20 August 2021.

<https://www.iucnredlist.org/species/190304/45098360>

ICES. 2021. Saithe (*Pollachius virens*) in subareas 4 and 6, and in Division 3.a (North Sea, Rockall and West of Scotland, Skagerrak and Kattegat). In Report of the ICES Advisory Committee, 2021. ICES Advice 2021, pok.27.3a46. <https://doi.org/10.17895/ices.advice.7827>.

<https://www.ices.dk/sites/pub/Publication%20Reports/Advice/2021/2021/pok.27.3a46.pdf>

Links

MARINTRUST Standard clause	1.3.2.2
FAO CCRF	7.5.3
GSSI	D.3.04, D5.01