



## MarinTrust Standard V2

# By-product Fishery Assessment Report Template

**MarinTrust Programme**

Unit C, Printworks

22 Amelia Street

London

SE17 3BZ

E: [standards@marin-trust.com](mailto:standards@marin-trust.com)

T: +44 2039 780 819

Table 1 Application details and summary of the assessment outcome

Fishery Under Assessment	Species:	Blue whiting, <i>Micromesistius poutassou</i>
	Geographical area:	FAO Area 27 Atlantic Northeast, ICES Subareas 1-9, 12 and 14
	Country of origin of the product:	Ireland
	Stock:	Blue whiting in ICES Subareas 1-9, 12 and 14 (Northeast Atlantic and adjacent waters)
Date	27 April 2021	
Report Code	BP46	
Assessor	Geraldine Criquet	
Country of origin of the product - PASS	Ireland	
Country of origin of the product - FAIL	NA	

Application details and summary of the assessment outcome			
Name:			
Address:			
Country: Ireland		Zip:	
Tel. No.:		Fax. No.:	
Email address:		Applicant Code:	
Key Contact:		Title:	
Certification Body Details			
Name of Certification Body:		Global Trust Certification	
Assessor	Peer Reviewer	Assessment Days	Initial/Surveillance/ Re-approval
Geraldine Criquet	Virginia Polonio	0.5	Surveillance 1
Assessment Period	April 2021		

Scope Details	
Main Species	Blue whiting, <i>Micromesistius poutassou</i>
Stock	Blue whiting in ICES Subareas 1-9, 12 and 14 (Northeast Atlantic and adjacent waters)
Fishery Location	FAO Area 27 Atlantic Northeast, ICES Subareas 1-9, 12 and 14
Management Authority (Country/ State)	EU/Common Fisheries Policy and Ireland
Gear Type(s)	Pelagic trawl and bottom trawl
Outcome of Assessment	
Peer Review Evaluation	Agree with assessor's determination
Recommendation	APPROVED

**Table 2. Assessment Determination**

Assessment Determination
<p>If any species is categorised as Endangered or Critically Endangered on IUCN’s Red List, or if it appears in the CITES appendices, it cannot be approved for use as MARIN TRUST raw material. Blue whiting (<i>Micromesistius poutassou</i>) is not listed as Endangered or Critically Endangered on IUCN’s Red List, nor it is listed in CITES appendices. Therefore, blue whiting (<i>Micromesistius poutassou</i>) in ICES Subareas 1-9, 12 and 14 (Northeast Atlantic and adjacent waters) is eligible for approval for use as MARIN TRUST by-product raw material.</p> <p>A long-term management strategy was agreed by the European Union, the Faroe Islands, Iceland and Norway in 2016. Blue whiting in ICES Subareas 1-9, 12 and 14 is subject to specific management and reference points are available to assess the stock status relative to. Therefore, the stock is categorised as Category C.</p> <p>Fishery removals of the stock are considered in the various stock assessment process so it <b>PASSES</b> Clause C1.1.</p> <p>According the most recent ICES advice, the spawning stock biomass is above <math>B_{lim}</math> and <math>MSYB_{trigger}</math>, it <b>PASSES</b> Clause C1.2.</p> <p>In order to be approved, the stock under assessment must pass both Clauses C1.1 and C1.2. Blue whiting (<i>Micromesistius poutassou</i>) in ICES Subareas 1-9, 12 and 14 (Northeast Atlantic and adjacent waters) passes both Clauses C1.1 and C1.2, and therefore is <b>APPROVED</b> by the assessor for the production of fishmeal and fish oil under the current Marin Trust v.2.0 by-product Standard.</p>
Fishery Assessment Peer Review Comments
<p>The species is under species-specific management plan and reference points are defined therefore it has been correctly categorised.</p> <p>Removals of the species are considered in the stock assessment and the stock is above limits. Therefore, it is <b>APPROVED</b> by the assessor for the production of fishmeal and fish oil under the current Marin Trust v.2.0 by-product Standard.</p>
Notes for On-site Auditor

## Species Categorisation

**NB:** If any species is categorised as Endangered or Critically Endangered on the IUCN Red List, or if it appears in CITES Appendix 1, it **cannot** be approved for use as an MARINTRUST raw material.

### IUCN Red list Category

By-product material from a species listed by IUCN (the International Union for Conservation of Nature) under the Red List for the following categories shall immediately fail the assessment;

- EXTINCT (E) AND EXTINCT IN THE WILD (EW)
- CRITICALLY ENDANGERED (CR) facing an extremely high risk of extinction in the wild.
- ENDANGERED (EN) facing a very high risk of extinction in the wild.

By-product material may be used from the following categories provided that all clauses in the MarinTrust standard are passed.

- VULNERABLE (VU) facing a high risk of extinction in the wild.
- NEAR THREATENED (NT) does not qualify for above now, but is close or is likely to qualify for, a threatened category in the near future.
- LEAST CONCERN (LC) Widespread and abundant.
- DATA DEFICIENT (DD) and NOT EVALUATED (NE)

## Table 3 Species Categorisation Table

Common name	Latin name	Stock	Management	Category	IUCN Red List Category <sup>1</sup>	CITES Appendix 1 <sup>2</sup>
Blue whiting	<i>Micromesistius poutassou</i>	Blue whiting in ICES Subarea 1-9, 12 and 14 (Northeast Atlantic and adjacent waters)	EU/Common Fisheries Policy and Ireland	C	LC	No

<sup>1</sup> <https://www.iucnredlist.org/>

<sup>2</sup> <https://cites.org/eng/app/appendices.php>

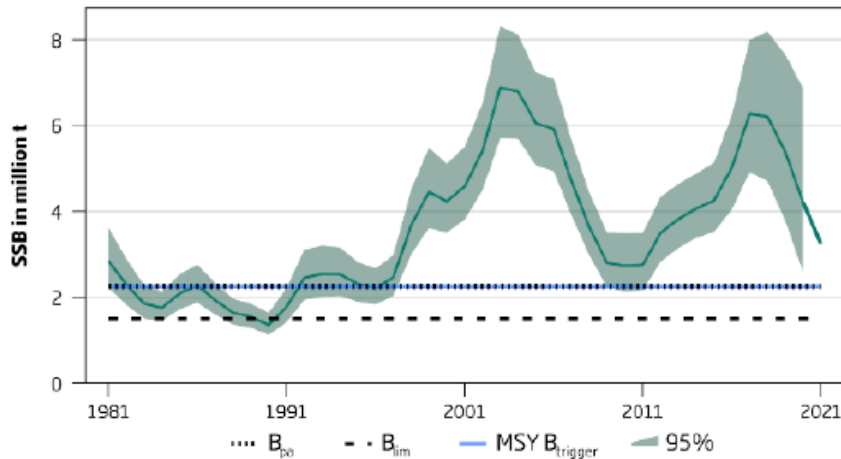
## CATEGORY C SPECIES

In a whole fish assessment, Category C species are those which make up less than 5% of landings, but which are subject to a species-specific management regime. In most cases this will be because they are a commercial target in a fishery other than the one under assessment.

Clause C1 should be completed for **each** Category C species. If there are no Category C species in the fishery under assessment, this section can be deleted. Where a species fails this Clause, it should be assessed as a Category D species instead.

Species Name		Blue whiting, <i>Micromesistius poutassou</i>																																																																																					
C1	Category C Stock Status - Minimum Requirements																																																																																						
	C1.1	Fishery removals of the species in the fishery under assessment are included in the stock assessment process, OR are considered by scientific authorities to be negligible.	PASS																																																																																				
	C1.2	The species is considered, in its most recent stock assessment, to have a biomass above the limit reference point (or proxy), OR removals by the fishery under assessment are considered by scientific authorities to be negligible.	PASS																																																																																				
			Clause outcome: <b>PASS</b>																																																																																				
<p><b>C1.1 Fishery removals of the species in the fishery under assessment are included in the stock assessment process, OR are considered by scientific authorities to be negligible.</b></p> <p>Catches are included in the stock assessment process. Figure 1 shows catches for the 1981-2020 period. Therefore, the stock <b>PASSES</b> Clause C1.1.</p> <div style="text-align: right; font-size: small;">wfb.27.1-91214_2020_13880_20209300200</div> <table border="1"> <caption>Estimated data for Figure 1: Blue whiting catches (million tonnes)</caption> <thead> <tr> <th>Year</th> <th>Catches (million t)</th> </tr> </thead> <tbody> <tr><td>1981</td><td>0.9</td></tr> <tr><td>1982</td><td>0.5</td></tr> <tr><td>1983</td><td>0.5</td></tr> <tr><td>1984</td><td>0.6</td></tr> <tr><td>1985</td><td>0.7</td></tr> <tr><td>1986</td><td>0.8</td></tr> <tr><td>1987</td><td>0.6</td></tr> <tr><td>1988</td><td>0.5</td></tr> <tr><td>1989</td><td>0.6</td></tr> <tr><td>1990</td><td>0.5</td></tr> <tr><td>1991</td><td>0.4</td></tr> <tr><td>1992</td><td>0.4</td></tr> <tr><td>1993</td><td>0.4</td></tr> <tr><td>1994</td><td>0.4</td></tr> <tr><td>1995</td><td>0.5</td></tr> <tr><td>1996</td><td>0.6</td></tr> <tr><td>1997</td><td>0.6</td></tr> <tr><td>1998</td><td>1.1</td></tr> <tr><td>1999</td><td>1.3</td></tr> <tr><td>2000</td><td>1.4</td></tr> <tr><td>2001</td><td>1.8</td></tr> <tr><td>2002</td><td>1.6</td></tr> <tr><td>2003</td><td>2.4</td></tr> <tr><td>2004</td><td>2.4</td></tr> <tr><td>2005</td><td>2.0</td></tr> <tr><td>2006</td><td>1.9</td></tr> <tr><td>2007</td><td>1.6</td></tr> <tr><td>2008</td><td>1.3</td></tr> <tr><td>2009</td><td>0.6</td></tr> <tr><td>2010</td><td>0.5</td></tr> <tr><td>2011</td><td>0.1</td></tr> <tr><td>2012</td><td>0.4</td></tr> <tr><td>2013</td><td>0.6</td></tr> <tr><td>2014</td><td>1.2</td></tr> <tr><td>2015</td><td>1.2</td></tr> <tr><td>2016</td><td>1.4</td></tr> <tr><td>2017</td><td>1.5</td></tr> <tr><td>2018</td><td>1.7</td></tr> <tr><td>2019</td><td>1.5</td></tr> <tr><td>2020</td><td>1.5</td></tr> <tr><td>2021</td><td>1.5</td></tr> </tbody> </table>				Year	Catches (million t)	1981	0.9	1982	0.5	1983	0.5	1984	0.6	1985	0.7	1986	0.8	1987	0.6	1988	0.5	1989	0.6	1990	0.5	1991	0.4	1992	0.4	1993	0.4	1994	0.4	1995	0.5	1996	0.6	1997	0.6	1998	1.1	1999	1.3	2000	1.4	2001	1.8	2002	1.6	2003	2.4	2004	2.4	2005	2.0	2006	1.9	2007	1.6	2008	1.3	2009	0.6	2010	0.5	2011	0.1	2012	0.4	2013	0.6	2014	1.2	2015	1.2	2016	1.4	2017	1.5	2018	1.7	2019	1.5	2020	1.5	2021	1.5
Year	Catches (million t)																																																																																						
1981	0.9																																																																																						
1982	0.5																																																																																						
1983	0.5																																																																																						
1984	0.6																																																																																						
1985	0.7																																																																																						
1986	0.8																																																																																						
1987	0.6																																																																																						
1988	0.5																																																																																						
1989	0.6																																																																																						
1990	0.5																																																																																						
1991	0.4																																																																																						
1992	0.4																																																																																						
1993	0.4																																																																																						
1994	0.4																																																																																						
1995	0.5																																																																																						
1996	0.6																																																																																						
1997	0.6																																																																																						
1998	1.1																																																																																						
1999	1.3																																																																																						
2000	1.4																																																																																						
2001	1.8																																																																																						
2002	1.6																																																																																						
2003	2.4																																																																																						
2004	2.4																																																																																						
2005	2.0																																																																																						
2006	1.9																																																																																						
2007	1.6																																																																																						
2008	1.3																																																																																						
2009	0.6																																																																																						
2010	0.5																																																																																						
2011	0.1																																																																																						
2012	0.4																																																																																						
2013	0.6																																																																																						
2014	1.2																																																																																						
2015	1.2																																																																																						
2016	1.4																																																																																						
2017	1.5																																																																																						
2018	1.7																																																																																						
2019	1.5																																																																																						
2020	1.5																																																																																						
2021	1.5																																																																																						
<p><b>C1.2 The species is considered, in its most recent stock assessment, to have a biomass above the limit reference point (or proxy), OR removals by the fishery under assessment are considered by scientific authorities to be negligible.</b></p> <p>The most recent ICES advice was published in September 2020. In 2020, the SSB was above <math>B_{lim}</math> and <math>MSY_{trigger}</math> (Figure 2 and Table 4). The stock is at its full reproductive capacity. Therefore, it <b>PASSES</b> Clause C1.2</p>																																																																																							

### SSB



**Figure 2.** Blue whiting in Subareas 1-9, 12 and 14. Summary of the stock assessment.

**Table 4.** Blue whiting in Subareas 1-9, 12 and 14. State of the stock and the fishery relative to reference points.

	Fishing pressure			Stock size						
	2018	2019	2020	2019	2020	2021				
Maximum sustainable yield	$F_{MSY}$	✗	✗	✗	Above	$MSY B_{trigger}$	✓	✓	✓	Above trigger
Precautionary approach	$F_{pa}, F_{lim}$	✓	✓	✓	Harvested sustainably	$B_{pa}, B_{lim}$	✓	✓	✓	Full reproductive capacity
Management plan	$F_{MGT}$	✗	✗	✗	Above	$B_{MGT}$	✓	✓	✓	Above

### References

Garcia, S. 2015. *Micromesistius poutassou*. *The IUCN Red List of Threatened Species* 2015: e.T198586A18983495. <https://www.iucnredlist.org/species/198586/18983495>

ICES. 2020. Blue whiting (*Micromesistius poutassou*) in subareas 1–9, 12, and 14 (Northeast Atlantic and adjacent waters). In Report of the ICES Advisory Committee, 2020. ICES Advice 2020, whb.27.1-91214. <https://www.ices.dk/sites/pub/Publication%20Reports/Advice/2020/2020/whb.27.1-91214.pdf>

### Links

MARINTRUST Standard clause	1.3.2.2
FAO CCRF	7.5.3
GSSI	D.3.04, D5.01