



## MarinTrust Standard V2

# By-product Fishery Assessment Report Template

**MarinTrust Programme**

Unit C, Printworks

22 Amelia Street

London

SE17 3BZ

E: [standards@marin-trust.com](mailto:standards@marin-trust.com)

T: +44 2039 780 819

**Table 1 Application details and summary of the assessment outcome**

Fishery Under Assessment	Species:	Lemon sole, <i>Microstomus kitt</i>
	Geographical area:	FAO Area 27 Atlantic Northeast, ICES Subarea 4 and Divisions 3.a and 7.d (North Sea, Skagerrak and Kattegat, eastern English Channel)
	Country of origin of the product:	U.K. & Ireland
	Stock:	Lemon sole in ICES Subarea 4 and Divisions 3.a and 7.d (North Sea, Skagerrak and Kattegat, eastern English Channel)
Date	27 April 2021	
Report Code	BP52	
Assessor	Geraldine Criquet	
Country of origin of the product - PASS	U.K. & Ireland	
Country of origin of the product - FAIL	NA	

Application details and summary of the assessment outcome			
Name:			
Address:			
Country: U.K. & Ireland		Zip:	
Tel. No.:		Fax. No.:	
Email address:		Applicant Code:	
Key Contact:		Title:	
Certification Body Details			
Name of Certification Body:		Global Trust Certification	
Assessor	Peer Reviewer	Assessment Days	Initial/Surveillance/ Re-approval
Geraldine Criquet	Virginia Polonio	0.5	Re-approval
Assessment Period	April 2021		

Scope Details	
Main Species	Lemon sole, <i>Microstomus kitt</i>
Stock	Lemon sole in ICES Subarea 4 and Divisions 3.a and 7.d (North Sea, Skagerrak and Kattegat, eastern English Channel)
Fishery Location	FAO Area 27 Atlantic Northeast, ICES Subarea 4 and Divisions 3.a and 7.d (North Sea, Skagerrak and Kattegat, eastern English Channel)
Management Authority (Country/ State)	EU/Common Fisheries Policy and U.K. & Ireland
Gear Type(s)	Beam trawl, Bottom trawl and gillnet
Outcome of Assessment	
Peer Review Evaluation	Agree with assessor's determination
Recommendation	APPROVED

**Table 2. Assessment Determination**

Assessment Determination
<p>If any species is categorised as Endangered or Critically Endangered on IUCN’s Red List, or if it appears in the CITES appendices, it cannot be approved for use as MARIN TRUST raw material. Lemon sole (<i>Microstomus kitt</i>) is not listed as Endangered or Critically Endangered on IUCN’s Red List, nor is it listed in CITES appendices. Therefore, lemon sole (<i>Microstomus kitt</i>) in ICES Subarea 4 and Divisions 3.a and 7.d is eligible for approval for use as MARIN TRUST by-product raw material.</p> <p>The EU multi-annual plan for stocks in the North Sea (EU, 2018) and adjacent waters applies to this stock. Lemon sole (<i>Microstomus kitt</i>) in ICES Subarea 4 and Divisions 3.a and 7.d is subject to specific management and reference points are available to assess the stock status relative to. Therefore, the stock is categorised as Category C.</p> <p>Fishery removals of the stock are considered in the various stock assessment process, so it <b>PASSES</b> Clause C1.1.</p> <p>According the most recent ICES advice, the fishing pressure (F) is below <math>F_{MSY}</math> and the spawning stock biomass is likely to be above a possible limit reference point, it <b>PASSES</b> Clause C1.2.</p> <p>In order to be approved, the stock under assessment must pass both Clauses C1.1 and C1.2. Lemon sole (<i>Microstomus kitt</i>) in ICES Subarea 4 and Divisions 3.a and 7 (North Sea, Skagerrak and Kattegat, eastern English Channel) passes both Clauses C1.1 and C1.2, and therefore is APPROVED by the assessor for the production of fishmeal and fish oil under the current Marin Trust v.2.0 by-product Standard.</p>
Fishery Assessment Peer Review Comments
<p>The species has management plan and it correctly classified as category C. Removals are considered in the stock assessment and the stock has the biomass above limits.</p> <p>Therefore, the species is APPROVED by the assessor for the production of fishmeal and fish oil under the current Marin Trust v.2.0 by-product Standard.</p>
Notes for On-site Auditor

## Species Categorisation

**NB:** If any species is categorised as Endangered or Critically Endangered on the IUCN Red List, or if it appears in CITES Appendix 1, it **cannot** be approved for use as an MARINTRUST raw material.

### IUCN Red list Category

By-product material from a species listed by IUCN (the International Union for Conservation of Nature) under the Red List for the following categories shall immediately fail the assessment;

- EXTINCT (E) AND EXTINCT IN THE WILD (EW)
- CRITICALLY ENDANGERED (CR) facing an extremely high risk of extinction in the wild.
- ENDANGERED (EN) facing a very high risk of extinction in the wild.

By-product material may be used from the following categories provided that all clauses in the MarinTrust standard are passed.

- VULNERABLE (VU) facing a high risk of extinction in the wild.
- NEAR THREATENED (NT) does not qualify for above now, but is close or is likely to qualify for, a threatened category in the near future.
- LEAST CONCERN (LC) Widespread and abundant.
- DATA DEFICIENT (DD) and NOT EVALUATED (NE)

## Table 3 Species Categorisation Table

Common name	Latin name	Stock	Management	Category	IUCN Red List Category <sup>1</sup>	CITES Appendix 1 <sup>2</sup>
Lemon sole	<i>Microstomus kitt</i>	Lemon sole in ICES Subarea 4 and Divisions 3.a and 7.d (North Sea, Skagerrak and Kattegat, eastern English Channel)	EU/Common Fisheries Policy and U.K. & Ireland	C	LC	No

<sup>1</sup> <https://www.iucnredlist.org/>

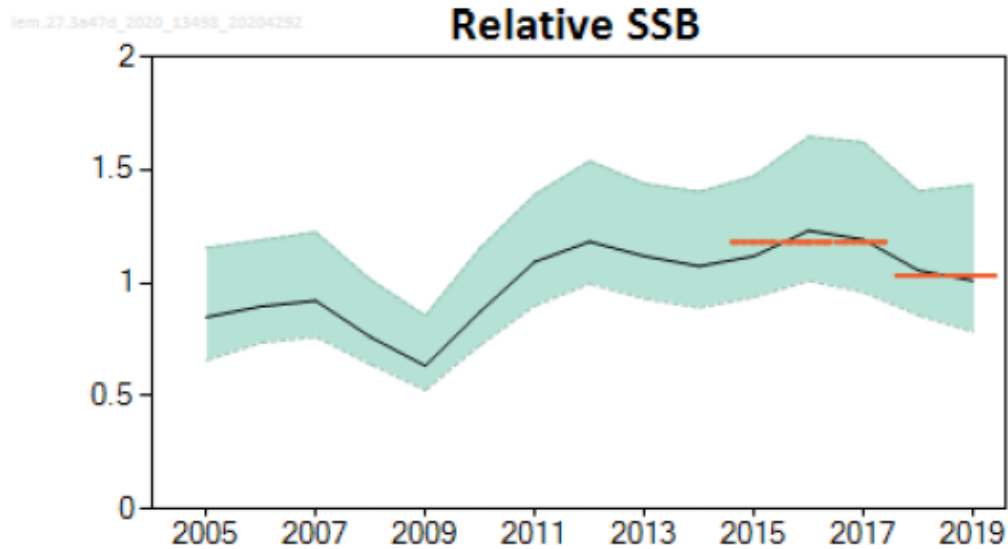
<sup>2</sup> <https://cites.org/eng/app/appendices.php>

## CATEGORY C SPECIES

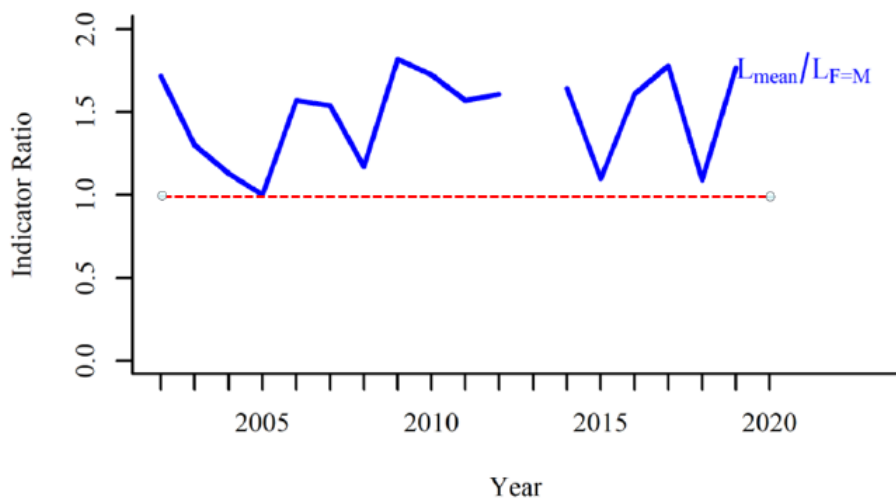
In a whole fish assessment, Category C species are those which make up less than 5% of landings, but which are subject to a species-specific management regime. In most cases this will be because they are a commercial target in a fishery other than the one under assessment.

Clause C1 should be completed for **each** Category C species. If there are no Category C species in the fishery under assessment, this section can be deleted. Where a species fails this Clause, it should be assessed as a Category D species instead.

Species Name		Lemon sole, <i>Microstomus kitt</i>	
C1	Category C Stock Status - Minimum Requirements		
	C1.1	Fishery removals of the species in the fishery under assessment are included in the stock assessment process, OR are considered by scientific authorities to be negligible.	PASS
	C1.2	The species is considered, in its most recent stock assessment, to have a biomass above the limit reference point (or proxy), OR removals by the fishery under assessment are considered by scientific authorities to be negligible.	PASS
			Clause outcome: <b>PASS</b>
<p><b>C1.1 Fishery removals of the species in the fishery under assessment are included in the stock assessment process, OR are considered by scientific authorities to be negligible.</b></p> <p>Input data include commercial catches (landings and discards), three survey indices, fixed maturity estimates, and annual weight-at-age data from the surveys. Figure 1 shows catches for the 1968-2004 period. Therefore, fishery removals are included in the stock assessment process, it <b>PASSES</b> Clause C1.1.</p> <div style="text-align: center;"> </div>			



**Figure 2.** Lemon sole in Subarea 4 and divisions 3.a and 7.d. Summary of the stock assessment. SURBAR-estimated relative SSB with 90% confidence intervals. The red horizontal lines show the mean stock indicators for 2018–2019 and 2015–2017.



**Figure 3.** Lemon sole in Subarea 4 and divisions 3.a and 7.d. The indicator ratio  $L_{mean} / L_F = M$  from the length-based indicator (LBI; ICES, 2020) method is used for the evaluation of the exploitation status. The exploitation status is below the FMSY proxy when the indicator ratio value is higher than 1 (shown by a dotted red line).

**References**

Monroe, T., Costa, M., Nielsen, J., Herrera, J. & de Sola, L. 2015. *Microstomus kitt*. *The IUCN Red List of Threatened Species 2015*: e.T18227047A45790333. <https://www.iucnredlist.org/species/18227047/45790333>

ICES. 2020. Lemon sole (*Microstomus kitt*) in Subarea 4 and divisions 3.a and 7.d (North Sea, Skagerrak and Kattegat, eastern English Channel). *In* Report of the ICES Advisory Committee, 2020. ICES Advice 2020, lem.27.3a47d.

<a href="https://doi.org/10.17895/ices.advice.5833">https://doi.org/10.17895/ices.advice.5833</a> . <a href="https://www.ices.dk/sites/pub/Publication%20Reports/Advice/2020/2020/lem.27.3a47d.pdf">https://www.ices.dk/sites/pub/Publication%20Reports/Advice/2020/2020/lem.27.3a47d.pdf</a>	
<b>Links</b>	
<b>MARINTRUST Standard clause</b>	1.3.2.2
<b>FAO CCRF</b>	7.5.3
<b>GSSI</b>	D.3.04, D5.01