



MarinTrust Standard V2

By-product Fishery Assessment *Saithe (Pollachius virens) in FAO 27, ICES Division 5.b: Faroe Grounds*

MarinTrust Programme

Unit C, Printworks

22 Amelia Street

London

SE17 3BZ

E: standards@marin-trust.com

T: +44 2039 780 819

Table 1 Application details and summary of the assessment outcome

Fishery Under Assessment	Species:	Saithe (<i>Pollachius virens</i>)
	Geographical area:	FAO 27 Northeast Atlantic
	Country of origin of the product:	Flag country not supplied by client Fished by: Faroes, UK, and Norway (ICES 2021 Catch Data)
	Stock:	Saithe in FAO 27 Division 5.b (Faroe Grounds)
Date	3 August 2022	
Report Code	FRA24	
Assessor	Matthew Jew	
Country of origin of the product - PASS	Flag country not supplied by client Fished by: Faroes, UK, and Norway (ICES 2021 Catch Data)	
Country of origin of the product - FAIL	NA	

Application details and summary of the assessment outcome			
Company Name(s): Copalis			
Country: France			
Email address:		Applicant Code:	
Certification Body Details			
Name of Certification Body:		Global Trust Certification	
Assessor	Peer Reviewer	Assessment Days	Initial/Surveillance/ Re-approval
Matthew Jew	Léa Lebechnech	0.5	Surveillance 1
Assessment Period	Up to August 2022		

Scope Details	
Main Species	Saithe (<i>Pollachius virens</i>)
Stock	Saithe in FAO 27 Division 5.b (Faroe Grounds)
Fishery Location	FAO 27 Northeast Atlantic
Management Authority (Country/ State)	Ministry of Fisheries (Faroes), Department for Environment, Food, and Rural Affairs (UK), Norwegian Directorate of Fisheries
Gear Type(s)	2020 Estimates: Pair trawls (95%), Other (5%)
Outcome of Assessment	
Peer Review Evaluation	Agree with assessor's recommendation of approval
Recommendation	APPROVED

Table 2. Assessment Determination

Assessment Determination
<p>If any species is categorised as Endangered or Critically Endangered on IUCN's Red List, or if it appears in the CITES appendices, it cannot be approved for use as Marin trust raw material. Saithe (<i>Pollachius virens</i>) do not appear as Endangered or Critically Endangered on IUCN's Red List, nor do they appear in CITES appendices; therefore, <i>Pollachius virens</i> is eligible for approval for use as Marin trust by-product raw material.</p> <p>ICES has not published the fishery advice for 2022. This surveillance report was conducted using the 2021 ICES fishery advice as it is the most current assessment at the time of review. A management plan using an MSY approach for Faroese Saithe was implemented in 2021, but ICES has not been requested to evaluate the plan. However, the stock is subject to a specific management regime and reference points are defined, therefore it was assessed under Category C.</p> <p>Fishery removals are included in the stock assessment and it PASSES Clause C1.1. The stock is considered, in its most recent stock assessment, to have biomass above the limit reference point, it PASSES Clause C1.2.</p> <p>Therefore, Saithe in Division 5.b (Faroe Grounds) is APPROVED for the production of fishmeal and fish oil under the current MarinTrust v2.0 by-products.</p>
Fishery Assessment Peer Review Comments
<p>The internal peer reviewer agrees with the assessor's determination, who correctly classified the stock of Saithe in ICES division 5.b (Faroe grounds) under Category C, as there is a specific management regime in place and reference points are defined.</p> <p>Fishery removals are included in the stock assessment and the stock has its SSB above reference points, so it passes Clauses C1.1 and C1.2.</p> <p>Therefore, saithe in ICES Division 5.b (Faroe grounds) is APPROVED.</p>
Notes for On-site Auditor
<p>Determine which flag state(s) the plant is sourcing its Saithe from.</p>

Species Categorisation

NB: If any species is categorised as Endangered or Critically Endangered on the IUCN Red List, or if it appears in CITES Appendix 1, it **cannot** be approved for use as a MarinTrust raw material.

IUCN Red list Category

By-product material from a species listed by IUCN (the International Union for Conservation of Nature) under the Red List for the following categories shall immediately fail the assessment;

- EXTINCT (E) AND EXTINCT IN THE WILD (EW)
- CRITICALLY ENDANGERED (CR) facing an extremely high risk of extinction in the wild.
- ENDANGERED (EN) facing a very high risk of extinction in the wild.

By-product material may be used from the following categories provided that all clauses in the MarinTrust standard are passed.

- VULNERABLE (VU) facing a high risk of extinction in the wild.
- NEAR THREATENED (NT) does not qualify for above now, but is close or is likely to qualify for, a threatened category in the near future.
- LEAST CONCERN (LC) Widespread and abundant.
- DATA DEFICIENT (DD) and NOT EVALUATED (NE)

Table 3 Species Categorisation Table

Common name	Latin name	Stock	Management	Category	IUCN Red List Category ¹	CITES Appendix 1 ²
Saithe	<i>Pollachius virens</i>	Saithe in FAO 27 Division 5.b (Faroe Grounds)	Ministry of Fisheries (Faroes), Department for Environment, Food, and Rural Affairs (UK), Norwegian Directorate of Fisheries	C	LC	No

¹ <https://www.iucnredlist.org/>

² <https://cites.org/eng/app/appendices.php>

CATEGORY C SPECIES

In a by-product assessment, Category C species are those which are subject to a species-specific management regime and are usually targeted species in fisheries for human consumption.

Clause C1 should be completed for each Category C species. If there are no Category C species in the fishery under assessment, this section can be deleted. Where a species fails this Clause, it should be assessed as a Category D species instead.

Species Name		Saithe (<i>Pollachius virens</i>)	
C1	Category C Stock Status - Minimum Requirements		
	C1.1	Fishery removals of the species in the fishery under assessment are included in the stock assessment process, OR are considered by scientific authorities to be negligible.	Yes
	C1.2	The species is considered, in its most recent stock assessment, to have a biomass above the limit reference point (or proxy), OR removals by the fishery under assessment are considered by scientific authorities to be negligible.	Yes
			Clause outcome: PASS
<p>C1.1 Fishery removals of the species in the fishery under assessment are included in the stock assessment process, OR are considered by scientific authorities to be negligible.</p> <p>This stock assessment is a state-space model, using catches (including commercial landings) in the model and in the forecast. Long-term catch data are presented in Figure 1.</p> <div data-bbox="365 1059 1272 1523" data-label="Figure"> <p style="text-align: right; font-size: small;">pok.27.5b_2021_16888_20211027145335</p> </div> <p>Figure 1. Long-term catches for Saithe in Division 5.b (Faroe Grounds). Source: ICES 2021.</p>			
<p>Therefore, fishery removals of the stock, including from the fishery under assessment, are included in the stock assessment process. The stock passes Clause C1.1.</p>			
<p>C1.2 The species is considered, in its most recent stock assessment, to have a biomass above the limit reference point (or proxy), OR removals by the fishery under assessment are considered by scientific authorities to be negligible.</p> <p>The spawning-stock biomass (SSB) is above MSY $B_{trigger}$, B_{pa}, and B_{lim} (Figure 2).</p>			

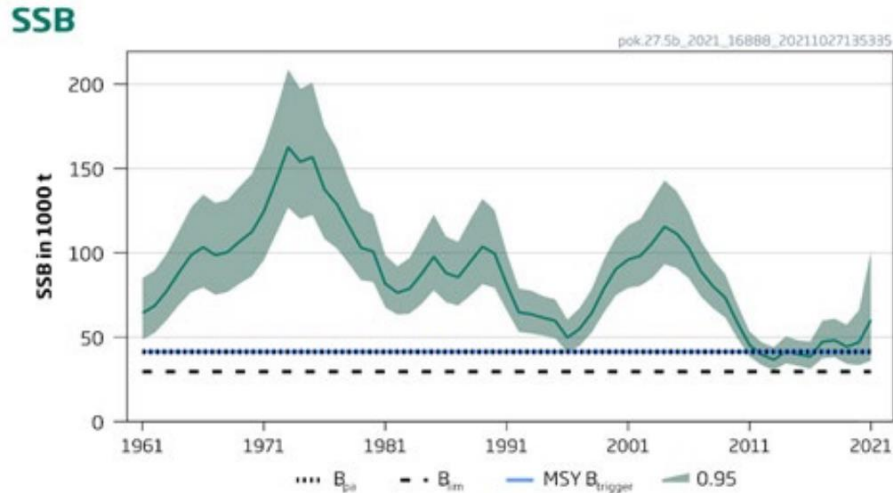


Figure 2. Long-term spawning stock biomass (SSB) trends in Division 5.a (Icelandic Grounds). Source: ICES 2021.

Therefore, the stock is considered, in its most recent stock assessment, to have biomass above the limit reference point. **The stock passes Clause C1.2.**

References

Cook, R., Fernandes, P., Florin, A., Lorange, P. & Nedreaas, K. 2015. *Pollachius virens*. *The IUCN Red List of Threatened Species* 2015: e.T190304A45098360. <https://www.iucnredlist.org/species/190304/45098360>. Accessed on 03 August 2022.

ICES. 2021. Saithe (*Pollachius virens*) in Division 5.b (Faroes grounds). In Report of the ICES Advisory Committee, 2021. ICES Advice 2021, pok.27.5b, <https://doi.org/10.17895/ices.advice.7829>.

Links

MarinTrust Standard clause	1.3.2.2
FAO CCRF	7.5.3
GSSI	D.3.04, D5.01