



## MarinTrust Standard V2

### By-product Fishery Assessment *Saithe (Pollachius virens) in FAO 27, Subareas 1 and 2: Northeast Arctic*

**MarinTrust Programme**

Unit C, Printworks

22 Amelia Street

London

SE17 3BZ

E: [standards@marin-trust.com](mailto:standards@marin-trust.com)

T: +44 2039 780 819

**Table 1 Application details and summary of the assessment outcome**

Fishery Under Assessment	Species:	Saithe ( <i>Pollachius virens</i> )
	Geographical area:	FAO 27 Northeast Atlantic
	Country of origin of the product:	Flag country not supplied by client
	Stock:	Saithe in FAO 27 Subareas 1 & 2 (Northeast Arctic)
Date	3 August 2022	
Report Code	FRA25	
Assessor	Matthew Jew	
Country of origin of the product - PASS	Flag country not supplied by client	
Country of origin of the product - FAIL	NA	

Application details and summary of the assessment outcome			
Company Name(s): Copalis			
Country: France			
Email address:		Applicant Code:	
Certification Body Details			
Name of Certification Body:		Global Trust Certification	
Assessor	Peer Reviewer	Assessment Days	Initial/Surveillance/ Re-approval
Matthew Jew	Léa Lebechnech	0.5	Surveillance 1
Assessment Period	Up to August 2022		

Scope Details	
Main Species	Saithe ( <i>Pollachius virens</i> )
Stock	Saithe in FAO 27 Subareas 1 & 2 (Northeast Arctic)
Fishery Location	FAO 27 Northeast Atlantic
Management Authority (Country/ State)	Flag state not supplied by client
Gear Type(s)	2021 Estimates: Gillnets (15.7%), Purse-seine (16.4%), Bottom Trawl (43.4%), Other (24.5%)
Outcome of Assessment	
Peer Review Evaluation	Agree with the assessor's recommendation of approval
Recommendation	APPROVED

## Table 2. Assessment Determination

Assessment Determination
<p>If any species is categorised as Endangered or Critically Endangered on IUCN's Red List, or if it appears in the CITES appendices, it cannot be approved for use as Marin trust raw material. Saithe (<i>Pollachius virens</i>) do not appear as Endangered or Critically Endangered on IUCN's Red List, nor do they appear in CITES appendices; therefore, <i>Pollachius virens</i> is eligible for approval for use as Marin trust by-product raw material.</p> <p>The harvest control rule (HCR) was last evaluated by ICES in 2011 and was concluded that HCR is precautionary. ICES still considers this HCR evaluation as valid. The stock is subject to a specific management regime and reference points are defined, therefore it was assessed under Category C.</p> <p>Fishery removals are included in the stock assessment and it PASSES Clause C1.1. The stock is considered, in its most recent stock assessment, to have biomass above the limit reference point, it PASSES Clause C1.2.</p> <p>Therefore, Saithe in Subareas 1 &amp; 2 (Northeast Arctic) is <b>APPROVED</b> for the production of fishmeal and fish oil under the current MarinTrust v2.0 by-products.</p>
Fishery Assessment Peer Review Comments
<p>The internal peer reviewer agrees with the assessor's determination, who correctly classified the stock of Saithe in Subareas 1 &amp; 2 (Northeast Arctic) under Category C, as there is a specific management regime in place and reference points are defined.</p> <p>Fishery removals are included in the stock assessment and the stock has its SSB above reference point, so it passes Clauses C1.1 and C1.2.</p> <p>Therefore, Saithe in Subareas 1&amp;2 (Northeast Arctic) is <b>APPROVED</b>.</p>
Notes for On-site Auditor
<p>Determine which flag state(s) the plant is sourcing its Saithe from.</p>

## Species Categorisation

**NB:** If any species is categorised as Endangered or Critically Endangered on the IUCN Red List, or if it appears in CITES Appendix 1, it **cannot** be approved for use as a MarinTrust raw material.

### IUCN Red list Category

By-product material from a species listed by IUCN (the International Union for Conservation of Nature) under the Red List for the following categories shall immediately fail the assessment;

- EXTINCT (E) AND EXTINCT IN THE WILD (EW)
- CRITICALLY ENDANGERED (CR) facing an extremely high risk of extinction in the wild.
- ENDANGERED (EN) facing a very high risk of extinction in the wild.

By-product material may be used from the following categories provided that all clauses in the MarinTrust standard are passed.

- VULNERABLE (VU) facing a high risk of extinction in the wild.
- NEAR THREATENED (NT) does not qualify for above now, but is close or is likely to qualify for, a threatened category in the near future.
- LEAST CONCERN (LC) Widespread and abundant.
- DATA DEFICIENT (DD) and NOT EVALUATED (NE)

## Table 3 Species Categorisation Table

Common name	Latin name	Stock	Management	Category	IUCN Red List Category <sup>1</sup>	CITES Appendix 1 <sup>2</sup>
Saithe	<i>Pollachius virens</i>	Saithe in FAO 27 Subareas 1 & 2 (Northeast Arctic)	Norwegian Management Plan	C	LC	No

<sup>1</sup> <https://www.iucnredlist.org/>

<sup>2</sup> <https://cites.org/eng/app/appendices.php>

## CATEGORY C SPECIES

In a by-product assessment, Category C species are those which are subject to a species-specific management regime and are usually targeted species in fisheries for human consumption.

Clause C1 should be completed for each Category C species. If there are no Category C species in the fishery under assessment, this section can be deleted. Where a species fails this Clause, it should be assessed as a Category D species instead.

Species Name		Saithe ( <i>Pollachius virens</i> )	
<b>C1</b>	<b>Category C Stock Status - Minimum Requirements</b>		
	<b>C1.1</b>	Fishery removals of the species in the fishery under assessment are included in the stock assessment process, OR are considered by scientific authorities to be negligible.	Yes
	<b>C1.2</b>	The species is considered, in its most recent stock assessment, to have a biomass above the limit reference point (or proxy), OR removals by the fishery under assessment are considered by scientific authorities to be negligible.	Yes
			<b>Clause outcome:</b> <b>PASS</b>
<p><b>C1.1 Fishery removals of the species in the fishery under assessment are included in the stock assessment process, OR are considered by scientific authorities to be negligible.</b></p> <p>This 2022 ICES stock assessment is an age-based analytical assessment that uses catches (including commercial landings) in the model and in the forecast. Long-term catch data are presented in Figure 1.</p> <div data-bbox="359 1059 1268 1556" data-label="Figure"> <p>The figure is a bar chart titled "Catches" showing annual catch data for Saithe in Subareas 1 &amp; 2 (Northeast Arctic) from 1961 to 2021. The vertical axis (y-axis) is labeled "Catches in 1000 t" and ranges from 0 to 250 in increments of 50. The horizontal axis (x-axis) shows years from 1961 to 2021 in 10-year increments. The chart displays a highly variable time series of catches, with several major peaks exceeding 200,000 t, notably around 1970, 1975, and 2005. There are also several periods of lower catches, with a notable dip around 1985. The overall trend shows continued high variability throughout the period.</p> </div> <p>Figure 1. Long-term catches for Saithe in Subareas 1 &amp; 2 (Northeast Arctic). Source: ICES 2022.</p>			

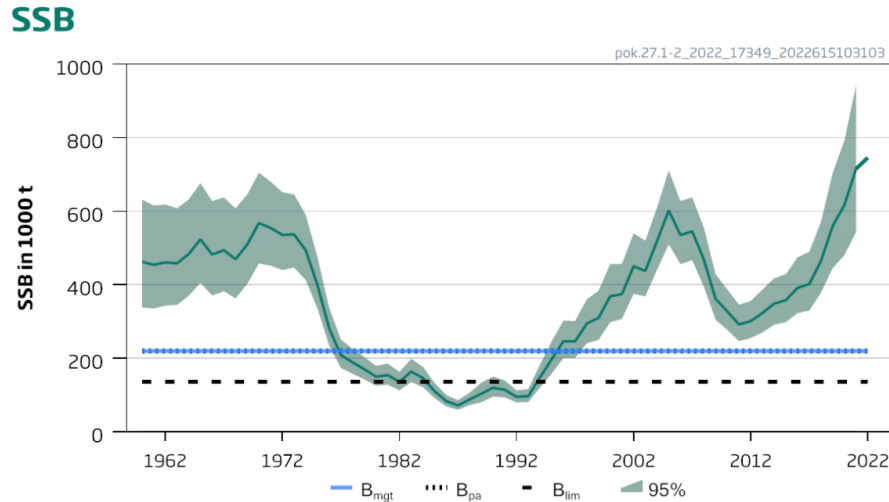


Figure 2. Long-term spawning stock biomass (SSB) trends in Subareas 1 & 2 (Northeast Arctic) with 95% confidence intervals. Source: ICES 2022.

Therefore, the stock is considered, in its most recent stock assessment, to have biomass above the limit reference point. **The stock passes Clause C1.2.**

**References**

Cook, R., Fernandes, P., Florin, A., Lorange, P. & Nedreaas, K. 2015. *Pollachius virens*. *The IUCN Red List of Threatened Species* 2015: e.T190304A45098360. <https://www.iucnredlist.org/species/190304/45098360>. Accessed on 03 August 2022.

ICES. 2022. Saithe (*Pollachius virens*) in subareas 1 and 2 (Northeast Arctic). In Report of the ICES Advisory Committee, 2022. ICES Advice 2022, pok.27.1-2, <https://doi.org/10.17895/ices.advice.19453646>.

**Links**

<b>MarinTrust Standard clause</b>	1.3.2.2
<b>FAO CCRF</b>	7.5.3
<b>GSSI</b>	D.3.04, D5.01