



MarinTrust Standard V2

By-product Fishery Assessment *Skipjack tuna (*Katsuwonus pelamis*) in FAO 71 and 81: Western Pacific, Central and South*

MarinTrust Programme

Unit C, Printworks

22 Amelia Street

London

SE17 3BZ

E: standards@marin-trust.com

T: +44 2039 780 819

Table 1 Application details and summary of the assessment outcome

Fishery Under Assessment	Species:	Skipjack tuna (<i>Katsuwonus pelamis</i>)
	Geographical area:	1. FAO 71 Pacific, Western Central 2. FAO 81 Pacific, Southwest
	Country of origin of the product:	Taiwan, New Zealand, Australia, Papa New Guinea, Solomon Islands
	Stock:	Skipjack Tuna from FAO 71 and 81 Western (Central and Southern) Pacific
Date	4 August 2022	
Report Code	VNM13	
Assessor	Matthew Jew	
Country of origin of the product - PASS	Vietnam (Flag countries: Taiwan, New Zealand, Australia, Papa New Guinea, Solomon Islands)	
Country of origin of the product - FAIL	NA	

Application details and summary of the assessment outcome			
Company Name(s): Thien Quynh Co Ltd; T. C. Union Vietnam Co			
Country: Vietnam			
Email address:		Applicant Code:	
Certification Body Details			
Name of Certification Body:		Global Trust Certification	
Assessor	Peer Reviewer	Assessment Days	Initial/Surveillance/ Re-approval
Matthew Jew	Léa Lebechnech	0.5	Re-Approval
Assessment Period	Up to August 2022		

Scope Details	
Main Species	Skipjack Tuna (<i>Katsuwonus pelamis</i>)
Stock	Skipjack Tuna from FAO 71 and 81 Western (Central and Southern) Pacific
Fishery Location	1. FAO 71 Pacific, Western Central 2. FAO 81 Pacific, Southwest
Management Authority (Country/ State)	Western and Central Pacific Fisheries Commission (WCPFC), Inter-American Tropical Tuna Commission (IATTC)
Gear Type(s)	Longline, Purse seine, Pole-and-line, and others
Outcome of Assessment	
Peer Review Evaluation	Agreed with the assessor's recommendation of approval
Recommendation	APPROVED

Table 2. Assessment Determination

Assessment Determination
<p>If any species is categorised as Endangered or Critically Endangered on IUCN's Red List, or if it appears in the CITES appendices, it cannot be approved for use as Marin trust raw material. Skipjack Tuna (<i>Katsuwonus pelamis</i>) do not appear as Endangered or Critically Endangered on IUCN's Red List, nor do they appear in CITES appendices; therefore, <i>Katsuwonus pelamis</i> is eligible for approval for use as Marin trust by-product raw material.</p> <p>The most recent stock assessment for Western Pacific Skipjack Tuna was conducted in 2019. Because this stock is not assessed on an annual basis, the findings of this assessment are based on the 2019 stock assessment and therefore, may be similar to previous years' findings. Note that the 2021 MarinTrust By-Product assessment incorrectly identified FAO 81 as the Southeast Pacific stock, so this assessment will differ from 2021 in that regard.</p> <p>The assessment considers Skipjack Tuna in the Western Pacific Ocean (FAO subareas 71 & 81) to be a single stock and this is the only stock under assessment. The stock is subject to a specific management regime (WCPFC), therefore it was assessed under Category C.</p> <p>Fishery removals are included in the stock assessment and it PASSES Clause C1.1. The stock is considered, in its most recent stock assessment, to have biomass above the limit reference point, it PASSES Clause C1.2.</p> <p>Therefore, Skipjack Tuna in Subareas 71 & 81 (Western Pacific) is APPROVED for the production of fishmeal and fish oil under the current MarinTrust v2.0 by-products.</p>
Fishery Assessment Peer Review Comments
<p>The internal peer reviewer agrees with the assessor's assessment, who correctly classified Western Pacific Skipjack Tuna in FAO Subareas 71 & 81 under category C, as reference points are defined to assess status of the stock relative to.</p> <p>Fishery removals are included in the stock assessment process, and the stock is considered, in its most recent stock assessment, to have a biomass above the limit reference point. Consequently, Skipjack Tuna in the Western Pacific Ocean PASSES Clauses C1.1 and C1.2.</p> <p>Therefore, Skipjack Tuna in the Western Pacific Ocean (FAO Subareas 71 & 81) is APPROVED.</p>
Notes for On-site Auditor

Species Categorisation

NB: If any species is categorised as Endangered or Critically Endangered on the IUCN Red List, or if it appears in CITES Appendix 1, it **cannot** be approved for use as a MarinTrust raw material.

IUCN Red list Category

By-product material from a species listed by IUCN (the International Union for Conservation of Nature) under the Red List for the following categories shall immediately fail the assessment;

- EXTINCT (E) AND EXTINCT IN THE WILD (EW)
- CRITICALLY ENDANGERED (CR) facing an extremely high risk of extinction in the wild.
- ENDANGERED (EN) facing a very high risk of extinction in the wild.

By-product material may be used from the following categories provided that all clauses in the MarinTrust standard are passed.

- VULNERABLE (VU) facing a high risk of extinction in the wild.
- NEAR THREATENED (NT) does not qualify for above now, but is close or is likely to qualify for, a threatened category in the near future.
- LEAST CONCERN (LC) Widespread and abundant.
- DATA DEFICIENT (DD) and NOT EVALUATED (NE)

Table 3 Species Categorisation Table

Common name	Latin name	Stock	Management	Category	IUCN Red List Category ¹	CITES Appendix 1 ²
Skipjack Tuna	<i>Katsuwonus pelamis</i>	Skipjack Tuna in FAO 71, 81	WCPFC, IATTC	C	LC	No

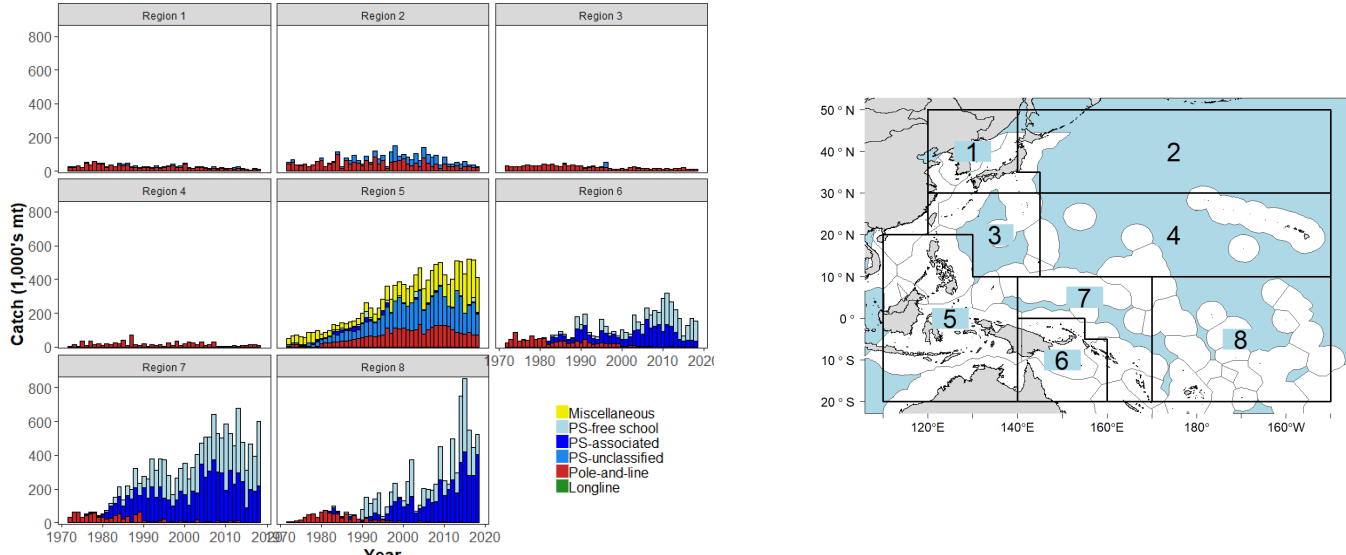
¹ <https://www.iucnredlist.org/>

² <https://cites.org/eng/app/appendices.php>

CATEGORY C SPECIES

In a by-product assessment, Category C species are those which are subject to a species-specific management regime and are usually targeted species in fisheries for human consumption.

Clause C1 should be completed for each Category C species. If there are no Category C species in the fishery under assessment, this section can be deleted. Where a species fails this Clause, it should be assessed as a Category D species instead.

Species Name		Skipjack Tuna (<i>Katsuwonus pelamis</i>)	
C1	Category C Stock Status - Minimum Requirements		
	C1.1	Fishery removals of the species in the fishery under assessment are included in the stock assessment process, OR are considered by scientific authorities to be negligible.	Yes
	C1.2	The species is considered, in its most recent stock assessment, to have a biomass above the limit reference point (or proxy), OR removals by the fishery under assessment are considered by scientific authorities to be negligible.	Yes
			Clause outcome: PASS
<p>C1.1 Fishery removals of the species in the fishery under assessment are included in the stock assessment process, OR are considered by scientific authorities to be negligible.</p> <p>Fishery removals of the Western Pacific Skipjack Tuna stock are included in the last WCPFC stock assessment process from 2019. Long-terms catches of Skipjack Tuna are presented in Figure 1.</p>  <p>Figure 1. Long-terms catches of Skipjack Tuna broken down by region and gear type. Source: Vincent et al. 2019.</p>			
<p>Therefore, fishery removals of the stock, including from the fishery under assessment, are included in the stock assessment process. The stock passes Clause C1.1.</p>			
<p>C1.2 The species is considered, in its most recent stock assessment, to have a biomass above the limit reference point (or proxy), OR removals by the fishery under assessment are considered by scientific authorities to be negligible.</p> <p>Western Pacific Skipjack Tuna is assessed and managed by the WCPFC which has adopted a limit reference point for the stock of 20% $SB_{F=0}$, where $SB_{F=0}$ is calculated as the average over the period 2006-2015. The most recent analyses of the stock was conducted in 2019 (Vincent et al. 2019). Vincent et al. (2019) determined that the Spawning Biomass (SB) was above the 20% $SB_{F=0}$ (Figure 2).</p>			

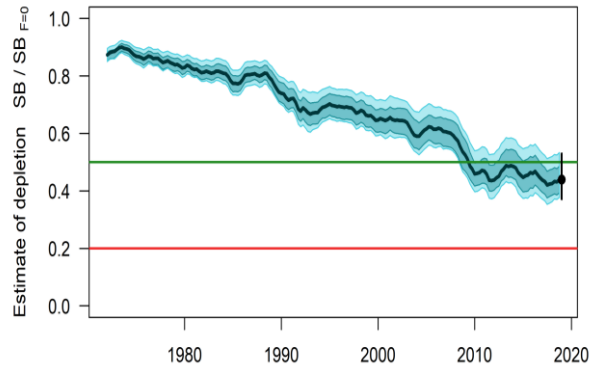


Figure 2. Long-term trends in Spawning Biomass (SB) to Unfished Spawning Biomass ($SB_{F=0}$) ratio. Green line is interim reference point and red line is agreed limit reference point. Source: Vincent et al. 2019.

Therefore, the stock is considered, in its most recent stock assessment, to have biomass above the limit reference point. **The stock passes Clause C1.2.**

References

Vincent M.T., Pilling G. M. and Hampton J. 2019. Stock assessment of skipjack tuna in the western and central Pacific Ocean. <https://www.wcpfc.int/doc/03/skipjack-tuna>. Accessed 4 August 2022.

Pilling G. 2021. WCPFC-SC 2021. Seventeenth Regular Session of the Scientific Committee. Summary Report. Virtual. 11–19 August 2021. <https://meetings.wcpfc.int/meetings/sc17>.

WCPFC. 2022. Harvest Strategy CMM 2014-06. <https://www.wcpfc.int/harvest-strategy>. Accessed 04 August 2022.

Links

MarinTrust Standard clause	1.3.2.2
FAO CCRF	7.5.3
GSSI	D.3.04, D5.01