



MarinTrust Standard V2

By-product Fishery Assessment Saithe (*Pollachius virens*) in ICES Subareas 4 and 6, Division 3.a (North Sea, Rockall and West of Scotland, Skaggerak, Kattegat)

MarinTrust Programme

Unit C, Printworks

22 Amelia Street

London

SE17 3BZ

E: standards@marin-trust.com

T: +44 2039 780 819

Table 1 Application details and summary of the assessment outcome

Fishery Under Assessment	Species:	Saithe (<i>Pollachius virens</i>)
	Geographical area:	FAO 27 - ICES Subareas 4 and 6, and in Division 3.a (North Sea, Rockall and West Scotland, Skagerrak and Kattegat)
	Country of origin of the product:	Denmark
	Stock:	Saithe in ICES Subareas 4 and 6, and in Division 3.a (North Sea, Rockall and West Scotland, Skagerrak and Kattegat)
Date	07 th February 2024	
Report Code	DNK05	
Assessor	Ana Elisa Almeida Ayres	
Country of origin of the product - PASS	Denmark	
Country of origin of the product - FAIL	N/A	

Application details and summary of the assessment outcome			
Company Name(s): Thyborøn, FF Skagen A/S			
Country: Denmark			
Email address:		Applicant Code:	
Certification Body Details			
Name of Certification Body:		Global Certification Trust/NSF	
Assessor	Peer Reviewer	Assessment Days	Initial/Surveillance/Re-approval
Ana Elisa Almeida Ayres	Léa Lebechnech	0.5	Surveillance 2
Assessment Period	February 2024 – February 2025		

Scope Details	
Main Species	Saithe (<i>Pollachius virens</i>)
Stock	Saithe in ICES Subareas 4 and 6, and in Division 3.a (North Sea, Rockall and West Scotland, Skagerrak and Kattegat)
Fishery Location	FAO 27 - ICES Subareas 4 and 6, and in Division 3.a (North Sea, Rockall and West Scotland, Skagerrak and Kattegat)
Management Authority (Country/ State)	European Union Common Fisheries Policy / Danish Directorate of Fisheries (Fiskeristyrelsen)
Gear Type(s)	Bottom trawl, gillnets and others
Outcome of Assessment	
Peer Review Evaluation	Agree with assessor's recommendation
Recommendation	APPROVED

Table 2. Assessment Determination

Assessment Determination
<p>If any species is categorised as Endangered or Critically Endangered on Union for Conservation of Nature's Red List of Threatened Species - IUCN's Red List, or if it appears in the Convention on International Trade in Endangered Species of Wild Fauna and Flora - CITES appendices, it cannot be approved for use as MarinTrust raw material. Saithe (<i>Pollachius virens</i>) is not categorised as Endangered or Critically Endangered on IUCN's Red List and does not appear in CITES appendices; therefore, saithe (<i>Pollachius virens</i>) is eligible for approval for use as Marin Trust by-product raw material.</p> <p>Saithe (<i>Pollachius virens</i>) was assessed as a category C species considering that a European Union - EU multiannual management plan (MAP) has been agreed by the EU for this setting reference points and annual quotas with management purposes. The International Council for the Exploration of the Sea (ICES) working group on the Assessment of Demersal Stocks in the North Sea and Skagerrak (WGNESSK) uses catches data as input for the stock assessment process. The last assessment for saithe in ICES 3.a, 4, 6. (Skagerrak and Kattegat, North Sea, Rockall and West of Scotland) was published in June 2023. Results indicates that spawning-stock size is above MSY Btrigger, Bpa, and Blim.</p> <p>Therefore, saithe (<i>Pollachius virens</i>) in FAO 27 - ICES Subareas 4 and 6, and in Division 3.a (North Sea, Rockall and West Scotland, Skagerrak and Kattegat) is APPROVED for the production of fishmeal and fish oil under the current MarinTrust v2.3 by-products standard.</p>
Fishery Assessment Peer Review Comments
<p>The assessor correctly classified saithe (<i>Pollachius virens</i>) in FAO 27 - ICES Subareas 4 and 6, and in Division 3.a (North Sea, Rockall and West Scotland, Skagerrak and Kattegat) as Category C, the stock is subject to a specific management regime and reference points are defined.</p> <p>Fishery removals are considered in the stock assessment process and the most recent stock assessment shows that the stock is above limit reference point. Therefore, the stock is considered to satisfy C1.1. and C1.2.</p> <p>In conclusion, saithe (<i>Pollachius virens</i>) in FAO 27 - ICES Subareas 4 and 6, and in Division 3.a (North Sea, Rockall and West Scotland, Skagerrak and Kattegat) passes both clauses (C1.1 and C1.2) and therefore should be approved under the MarinTrust Standard v2.3.</p>
Notes for On-site Auditor
N/A

Species Categorisation

NB: If any species is categorised as Endangered or Critically Endangered on the IUCN Red List, or if it appears in CITES Appendix 1, it **cannot** be approved for use as a MarinTrust raw material.

IUCN Red list Category

By-product material from a species listed by IUCN (the International Union for Conservation of Nature) under the Red List for the following categories shall immediately fail the assessment;

- EXTINCT (E) AND EXTINCT IN THE WILD (EW)
- CRITICALLY ENDANGERED (CR) facing an extremely high risk of extinction in the wild.
- ENDANGERED (EN) facing a very high risk of extinction in the wild.

By-product material may be used from the following categories provided that all clauses in the MarinTrust standard are passed.

- VULNERABLE (VU) facing a high risk of extinction in the wild.
- NEAR THREATENED (NT) does not qualify for above now, but is close or is likely to qualify for, a threatened category in the near future.
- LEAST CONCERN (LC) Widespread and abundant.
- DATA DEFICIENT (DD) and NOT EVALUATED (NE)

Table 3 Species Categorisation Table

Common name	Latin name	Stock	Management	Category	IUCN Red List Category ¹	CITES Appendix 1 ²
Saithe	<i>Pollachius virens</i>	Saithe in Subareas 4 and 6, and in Division 3.a (North Sea, Rockall and West Scotland, Skagerrak and Kattegat)	European Union Common Fisheries Policy / Danish Directorate of Fisheries (Fiskeristyrelsen)	C	LC	No

¹ <https://www.iucnredlist.org/>

² <https://cites.org/eng/app/appendices.php>

CATEGORY C SPECIES

In a by-product assessment, Category C species are those which are subject to a species-specific management regime and are usually targeted species in fisheries for human consumption.

Clause C1 should be completed for each Category C species. If there are no Category C species in the fishery under assessment, this section can be deleted. Where a species fails this Clause, it should be assessed as a Category D species instead.

Species Name		Saithe (<i>Pollachius virens</i>)	
C1	Category C Stock Status - Minimum Requirements		
	C1.1	Fishery removals of the species in the fishery under assessment are included in the stock assessment process, OR are considered by scientific authorities to be negligible.	Yes
	C1.2	The species is considered, in its most recent stock assessment, to have a biomass above the limit reference point (or proxy), OR removals by the fishery under assessment are considered by scientific authorities to be negligible.	Yes

Clause outcome: Pass

C1.1 Fishery removals of the species in the fishery under assessment are included in the stock assessment process, OR are considered by scientific authorities to be negligible.

ICES advises that when the MSY approach is applied, catches in 2024 should be no more than 73,815 tonnes. ICES notes the existence of a precautionary management plan, developed and adopted by one of the relevant management authorities for this stock.

The stock was benchmarked in 2016 and an interbenchmark was conducted in 2019 by The International Council for exploration of the Sea (ICES) working group of Demersal Stocks in the North Sea and Skagerrak (WGNSSK) [ICES 2023]. Last assessment was carried out in 2023 implementing an Age-based analytical assessment (SAM) that uses catches and surveys in the model and in the forecast; thus, removals of the species are included in the stock assessment process (ICES 2023) [Figure 1].

Catches

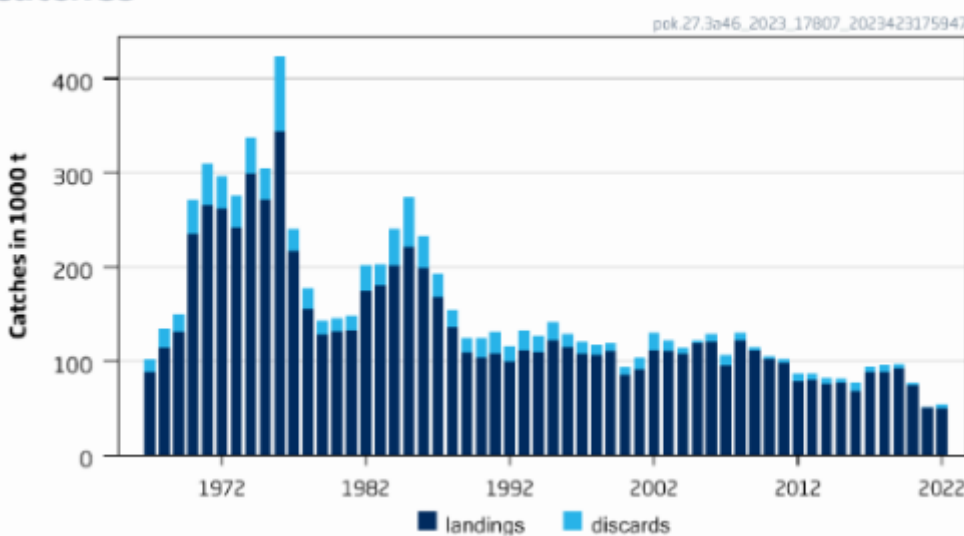


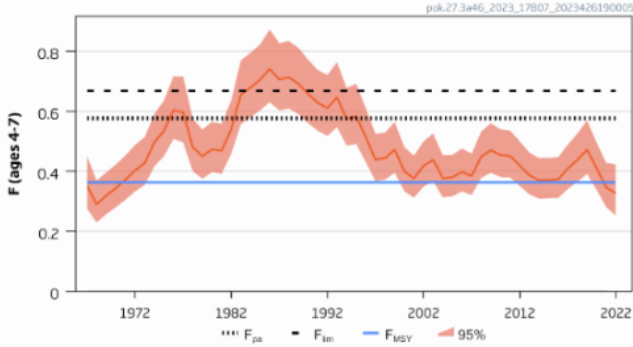
Figure 1. Saithe catches in ICES 3.a, 4, 6. Skagerrak and Kattegat, North Sea, Rockall and West of Scotland (ICES 2023).

Fishery removals of the species in the fishery under assessment are included in the stock assessment process. C.1.1 is met.

C1.2 The species is considered, in its most recent stock assessment, to have a biomass above the limit reference point (or proxy), OR removals by the fishery under assessment are considered by scientific authorities to be negligible.

The 2023 saithe stock assessment indicates that spawning-stock size is above MSY Btrigger, Bpa, and Blim. These values are encouraging considering that in 2022 SSB was below MSY Btrigger and Bpa (ICES 2023) [Figure 2].

Fishing pressure



Spawning Stock Biomass

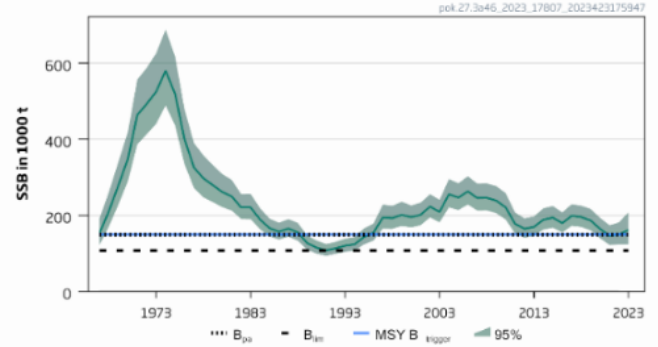


Figure 2. Fishing pressure and spawning stock biomass for saithe ICES 3.a, 4, 6. Skagerrak and Kattegat, North Sea, Rockall and West of Scotland. (ICES 2023).

The species is considered, in its most recent stock assessment, to have a biomass above the limit reference point. C.1.2 is met.

References

ICES (2023). Saithe (*Pollachius virens*) in subareas 4 and 6, and in Division 3.a (North Sea, Rockall and West of Scotland, Skagerrak and Kattegat). ICES Advice: Recurrent Advice. Report. Published in June 2023. <https://doi.org/10.17895/ices.advice.21841008.v1>

Links

MarinTrust Standard clause	1.3.2.2
FAO CCRF	7.5.3
GSSI	D.3.04, D5.01