



MarinTrust Standard V2

By-product Fishery Assessment Whiting (*Merlangius merlangus*) in FAO 27, ICES 6.a (west of Scotland)

MarinTrust Programme

Unit C, Printworks

22 Amelia Street

London

SE17 3BZ

E: standards@marin-trust.com

T: +44 2039 780 819

Table 1 Application details and summary of the assessment outcome

Fishery Under Assessment	Species:	Whiting (<i>Merlangius merlangus</i>)
	Geographical area:	FAO 27, ICES 6.a (west of Scotland)
	Country of origin of the product:	Denmark
	Stock:	Whiting in FAO 27, ICES 6.a (west of Scotland)
Date	07 th February 2024	
Report Code	DNK08	
Assessor	Ana Elisa Almeida Ayres	
Country of origin of the product - PASS	Denmark	
Country of origin of the product - FAIL	N/A	

Application details and summary of the assessment outcome			
Company Name(s): Thyborøn, FF Skagen A/S			
Country: Denmark			
Email address:		Applicant Code:	
Certification Body Details			
Name of Certification Body:		Global Certification Trust/NSF	
Assessor	Peer Reviewer	Assessment Days	Initial/Surveillance/Re-approval
Ana Elisa Almeida Ayres	Léa Lebechnech	0.5	Surveillance 2
Assessment Period	February 2024 – February 2025		

Scope Details	
Main Species	Whiting (<i>Merlangius merlangus</i>)
Stock	Whiting in FAO 27, ICES 6.a (west of Scotland)
Fishery Location	FAO 27, ICES 6.a (west of Scotland)
Management Authority (Country/ State)	European Union Common Fisheries Policy / Danish Directorate of Fisheries (Fiskeristyrelsen)
Gear Type(s)	Finfish directed otter trawl, <i>Nephrops</i> directed otter trawl and other gears
Outcome of Assessment	
Peer Review Evaluation	Agree with assessor's recommendation
Recommendation	APPROVED

Table 2. Assessment Determination

Assessment Determination
<p>If any species is categorised as Endangered or Critically Endangered on Union for Conservation of Nature's Red List of Threatened Species - IUCN's Red List, or if it appears in the Convention on International Trade in Endangered Species of Wild Fauna and Flora - CITES appendices, it cannot be approved for use as MarinTrust raw material. Whiting (<i>Merlangius merlangus</i>) is not categorised as Endangered or Critically Endangered on IUCN's Red List and does not appear in CITES appendices; therefore, whiting (<i>Merlangius merlangus</i>) is eligible for approval for use as Marin Trust by-product raw material.</p> <p>Whiting (<i>Merlangius merlangus</i>) was assessed as a category C species considering that an European Union - EU multiannual management plan (MAP) has been agreed by the EU for this setting reference points and annual quotas with management purposes. The last assessment of whiting in FAO 27, ICES 6.a (west of Scotland) was published in June 2023. Catches are considered in the stock assessment and spawning-stock size is below MSY Btrigger and between Bpa and Blim.</p> <p>Therefore, whiting in FAO 27, ICES 6.a (west of Scotland) is APPROVED for the production of fishmeal and fish oil under the current MarinTrust v2.3 by-products standard.</p>
Fishery Assessment Peer Review Comments
<p>The assessor correctly classified whiting (<i>Merlangius merlangus</i>) in FAO 27, ICES 6.a (west of Scotland) as Category C, the stock is subject to a specific management regime and reference points are defined.</p> <p>Fishery removals are considered in the stock assessment process and the most recent stock assessment shows that the stock is above limit reference point. Therefore, the stock is considered to satisfy C1.1. and C1.2.</p> <p>In conclusion, whiting (<i>Merlangius merlangus</i>) in FAO 27, ICES 6.a (west of Scotland) passes both clauses (C1.1 and C1.2) and therefore should be approved under the MarinTrust Standard v2.3.</p>
Notes for On-site Auditor
N/A

Species Categorisation

NB: If any species is categorised as Endangered or Critically Endangered on the IUCN Red List, or if it appears in CITES Appendix 1, it **cannot** be approved for use as a MarinTrust raw material.

IUCN Red list Category

By-product material from a species listed by IUCN (the International Union for Conservation of Nature) under the Red List for the following categories shall immediately fail the assessment;

- EXTINCT (E) AND EXTINCT IN THE WILD (EW)
- CRITICALLY ENDANGERED (CR) facing an extremely high risk of extinction in the wild.
- ENDANGERED (EN) facing a very high risk of extinction in the wild.

By-product material may be used from the following categories provided that all clauses in the MarinTrust standard are passed.

- VULNERABLE (VU) facing a high risk of extinction in the wild.
- NEAR THREATENED (NT) does not qualify for above now, but is close or is likely to qualify for, a threatened category in the near future.
- LEAST CONCERN (LC) Widespread and abundant.
- DATA DEFICIENT (DD) and NOT EVALUATED (NE)

Table 3 Species Categorisation Table

Common name	Latin name	Stock	Management	Category	IUCN Red List Category ¹	CITES Appendix 1 ²
Whiting	<i>Merlangius merlangus</i>	Whiting in FAO 27, ICES 6.a (west of Scotland)	European Union Common Fisheries Policy / Danish Directorate of Fisheries (Fiskeristyrelsen)	C	LC	No

¹ <https://www.iucnredlist.org/>

² <https://cites.org/eng/app/appendices.php>

CATEGORY C SPECIES

In a by-product assessment, Category C species are those which are subject to a species-specific management regime and are usually targeted species in fisheries for human consumption.

Clause C1 should be completed for each Category C species. If there are no Category C species in the fishery under assessment, this section can be deleted. Where a species fails this Clause, it should be assessed as a Category D species instead.

Species Name		Whiting (<i>Merlangius merlangus</i>)	
C1	Category C Stock Status - Minimum Requirements		
	C1.1	Fishery removals of the species in the fishery under assessment are included in the stock assessment process, OR are considered by scientific authorities to be negligible.	Yes
	C1.2	The species is considered, in its most recent stock assessment, to have a biomass above the limit reference point (or proxy), OR removals by the fishery under assessment are considered by scientific authorities to be negligible.	Yes
Clause outcome:			Pass

C1.1 Fishery removals of the species in the fishery under assessment are included in the stock assessment process, OR are considered by scientific authorities to be negligible.

ICES advises that when the MSY approach is applied, catches in 2024 should be no more than 3,879 tonnes. Management should be implemented at the stock level.

This stock is assessed using Analytical age-based assessment (SAM) that uses catches in the model and in the forecast. The input data includes: commercial landings, estimated discards, age composition of catches. Three survey indices: ScoGFS-WIBTS-Q1 (G1179), UK-SCOWCGFS-Q1 (G4748) and a modelled Q4 index estimated using ScoGFS-WIBTS-Q4 (G4299), IGFS-WIBTS-Q4 (G7212), and UK-SCOWCGFS-Q4 (G4815). A fixed maturity ogive; natural mortalities-at-age (Lorenzen, 1996); stock weights-at-age from survey and catch data. Discards and bycatch are included in the assessment (ages 0+), dataserries from the main fleets (covering 96% of the landings).

Catches included in the stock assessment are demonstrated in Figure 1.

Catches

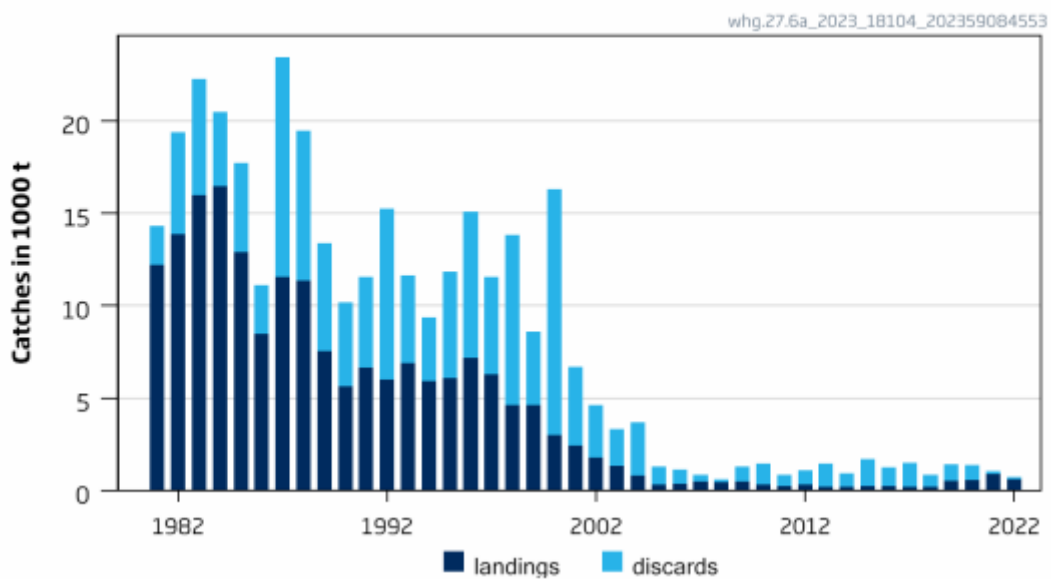


Figure 1. Catches of whiting in Division 6.a (ICES 2023).

Fishery removals of the species in the fishery under assessment are included in the stock assessment process. C.1.1 is met.

C1.2 The species is considered, in its most recent stock assessment, to have a biomass above the limit reference point (or proxy), OR removals by the fishery under assessment are considered by scientific authorities to be negligible.

Fishing pressure on the stock is below FMSY, and spawning-stock size is below MSY B trigger and between Bpa and Blim (Figure 2).

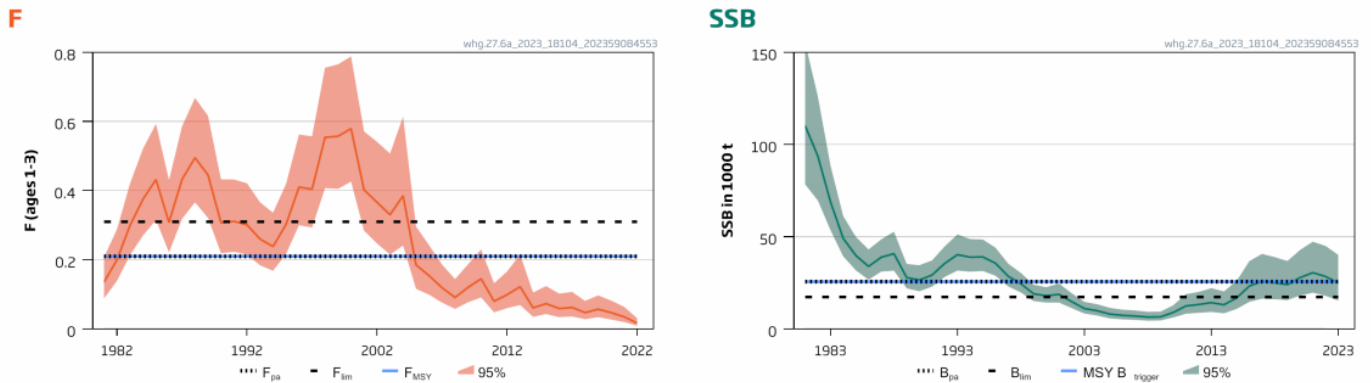


Figure 2. Fishing pressure and spawning stock biomass for whiting in Division 6.a (ICES 2023).

The species is considered, in its most recent stock assessment, to have a biomass above the limit reference point. C.1.2 is met.

References

ICES. 2023. Whiting (*Merlangius merlangus*) in Division 6.a (West of Scotland). In Report of the ICES Advisory Committee, 2023. ICES Advice 2023, whg.27.6a. Published 30 June 2023 <https://doi.org/10.17895/ices.advice.21864327>

Links

MarinTrust Standard clause	1.3.2.2
FAO CCRF	7.5.3
GSSI	D.3.04, D5.01