



MarinTrust Standard V2

By-product Fishery Assessment DNK12 – Plaice (*Pleuronectes platessa*) in ICES Subdivisions 3.a.21-23

MarinTrust Programme

Unit C, Printworks

22 Amelia Street

London

SE17 3BZ

E: standards@marin-trust.com

T: +44 2039 780 819

Table 1 Application details and summary of the assessment outcome

Fishery Under Assessment	Species:	Plaice (<i>Pleuronectes platessa</i>)
	Geographical area:	FAO 27, Northeast Atlantic
	Country of origin of the product:	Denmark
	Stock:	Plaice in Subdivisions 21-23 (Kattegat, Belt Seas, and the Sound)
Date	March 2024	
Report Code	DNK12	
Assessor	Sam Peacock	
Country of origin of the product - PASS	Denmark	
Country of origin of the product - FAIL	N/A	

Application details and summary of the assessment outcome			
Company Name(s): Thyborøn, FF Skagen A/S			
Country: Denmark			
Email address:		Applicant Code:	
Certification Body Details			
Name of Certification Body:		Global Trust Certification Ltd. / NSF	
Assessor	Peer Reviewer	Assessment Days	Initial/Surveillance/Re-approval
Sam Peacock	Matthew Jew	0.2	Re-approval
Assessment Period	March 2024 – March 2025		

Scope Details	
Main Species	Plaice (<i>Pleuronectes platessa</i>)
Stock	Plaice in Subdivisions 21-23 (Kattegat, Belt Seas, and the Sound)
Fishery Location	FAO 27, Northeast Atlantic
Management Authority (Country/ State)	EU
Gear Type(s)	Active and passive gears
Outcome of Assessment	
Peer Review Evaluation	Agree with assessor's recommendation
Recommendation	APPROVED

Table 2. Assessment Determination

Assessment Determination
<p>If any species is categorised as Endangered or Critically Endangered on IUCN’s Red List, or if it appears in the CITES appendices, it cannot be approved for use as Marin trust raw material. Plaice (<i>Pleuronectes platessa</i>) does not appear as Endangered or Critically Endangered on IUCN’s Red List, and does not appear in CITES appendices; therefore, <i>Pleuronectes platessa</i> is eligible for approval for use as Marin trust by-product raw material.</p> <p>Two management plans apply to this stock: the EU Multi-Annual Plan (MAP) for the Baltic Sea applies to bycatches of plaice, and the North Sea MAP applies to all plaice catches in Subdivision 21. As there is a management regime in place and reference points are defined, this stock is assessed under category C.</p> <p>The stock is subject to regular stock assessment by ICES, most recently in 2023. The assessment incorporates all catches and discard data, and meets C1.1. The outcome of the most recent assessment indicated that plaice SSB is considerably higher than the target reference point level, and therefore C1.2 is met.</p> <p>Therefore, Plaice (<i>Pleuronectes platessa</i>) in ICES Subdivisions 21-23 is APPROVED for the production of fishmeal and fish oil under the current MarinTrust v2.3 by-products.</p>
Fishery Assessment Peer Review Comments
<p>The assessor correctly classified plaice (<i>Pleuronectes platessa</i>) in ICES Subdivisions 21-23 as Category C, the stock is subject to a specific management regime and reference points are defined.</p> <p>Fishery removals are considered in the stock assessment process. The most recent stock assessment shows that the stock is above MSY $B_{trigger}$, B_{pa}, and B_{lim}. Therefore, because the stock has biomass above the limit reference point, it passes Category C.</p> <p>Plaice (<i>Pleuronectes platessa</i>) in ICES Subdivisions 21-23 passes both clauses (C1.1 and 1.2) and therefore should be approved under the MarinTrust Standard v.2.3.</p>
Notes for On-site Auditor
N/A

Species Categorisation

NB: If any species is categorised as Endangered or Critically Endangered on the IUCN Red List, or if it appears in CITES Appendix 1, it **cannot** be approved for use as an MarinTrust raw material.

IUCN Red list Category

By-product material from a species listed by IUCN (the International Union for Conservation of Nature) under the Red List for the following categories shall immediately fail the assessment;

- EXTINCT (E) AND EXTINCT IN THE WILD (EW)
- CRITICALLY ENDANGERED (CR) facing an extremely high risk of extinction in the wild.
- ENDANGERED (EN) facing a very high risk of extinction in the wild.

By-product material may be used from the following categories provided that all clauses in the MarinTrust standard are passed.

- VULNERABLE (VU) facing a high risk of extinction in the wild.
- NEAR THREATENED (NT) does not qualify for above now, but is close or is likely to qualify for, a threatened category in the near future.
- LEAST CONCERN (LC) Widespread and abundant.
- DATA DEFICIENT (DD) and NOT EVALUATED (NE)

Table 3 Species Categorisation Table

Common name	Latin name	Stock	Management	Category	IUCN Red List Category ¹	CITES Appendix 1 ²
Plaice	<i>Pleuronectes platessa</i>	Plaice in Subdivisions 21-23 (Kattegat, Belt Seas, and the Sound)	Yes	C	Least Concern ³	No

¹ <https://www.iucnredlist.org/>

² <https://cites.org/eng/app/appendices.php>

³ <https://www.iucnredlist.org/species/135690/50018800>

CATEGORY C SPECIES

In a by-product assessment, Category C species are those which are subject to a species-specific management regime and are usually targeted species in fisheries for human consumption.

Clause C1 should be completed for each Category C species. If there are no Category C species in the fishery under assessment, this section can be deleted. Where a species fails this Clause, it should be assessed as a Category D species instead.

Species Name		Plaice (<i>Pleuronectes platessa</i>)	
C1	Category C Stock Status - Minimum Requirements		
	C1.1	Fishery removals of the species in the fishery under assessment are included in the stock assessment process, OR are considered by scientific authorities to be negligible.	Pass
	C1.2	The species is considered, in its most recent stock assessment, to have a biomass above the limit reference point (or proxy), OR removals by the fishery under assessment are considered by scientific authorities to be negligible.	Pass
			Clause outcome: PASS

C1.1 Fishery removals of the species in the fishery under assessment are included in the stock assessment process, OR are considered by scientific authorities to be negligible.

Plaice in ICES Subdivisions 3a.21-23 is subject to annual stock assessment conducted by the ICES Baltic Fisheries Assessment Working Group (WGBFAS). The assessment utilises an age-based analytical assessment which incorporates catches in the model and the forecast. Input data includes commercial catches, two survey indices, maturity data, estimated natural mortality rates, and stock weight-at-age data. Discard information since 2002 is available and used.

The 2023 catch advice concludes, "ICES advises that when the MSY approach is applied, catches in 2024 should be no more than 17 254 tonnes" (ICES 2023)

Catches are presented in the figure below:

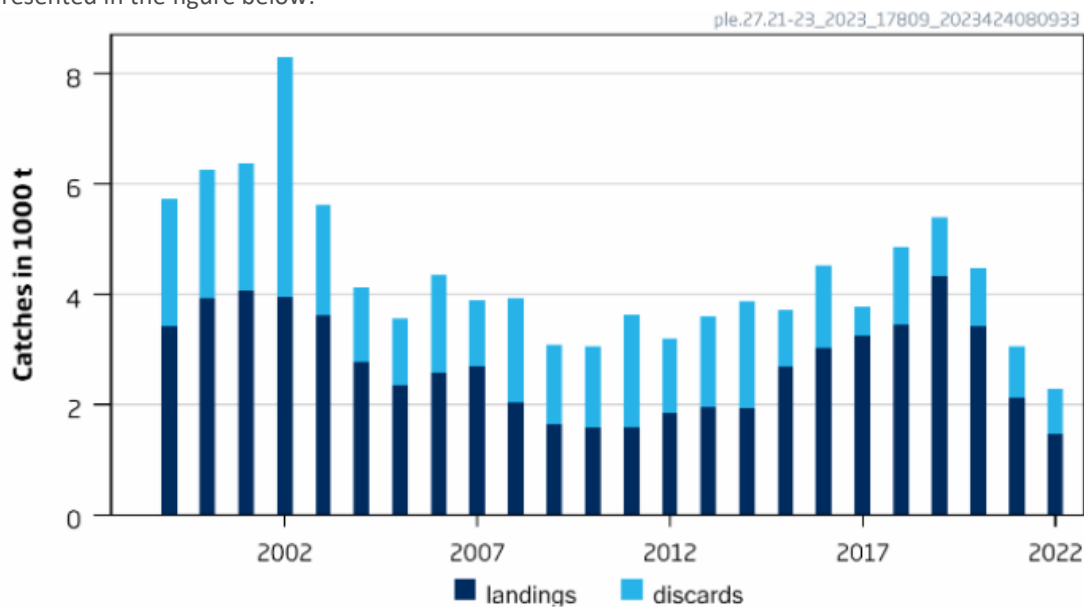


Figure 1. Catches of plaice in ICES Subdivisions 3a.21-23 (ICES 2023)

Therefore, fishery removals of the species in the fishery under assessment are included in the stock assessment process and therefore the stock PASSES clause C1.1.

C1.2 The species is considered, in its most recent stock assessment, to have a biomass above the limit reference point (or proxy), OR removals by the fishery under assessment are considered by scientific authorities to be negligible.

The ICES catch advice provides an indication of the status of the stock relative to established reference points. The target reference points $MSY B_{trigger}$ and B_{pa} have been set at 4,730t. The limit reference point B_{lim} has been set at 3,635t. The short-term forecast produced by the most recent stock assessment estimated that SSB in 2024 would be 33,248t, far greater than the target reference point level (ICES 2023).

The ICES catch advice states that “Fishing pressure on the stock is below F_{MSY} and spawning-stock size is above $MSY B_{trigger}$, B_{pa} , and B_{lim} ” (ICES 2023). See Figure 2.

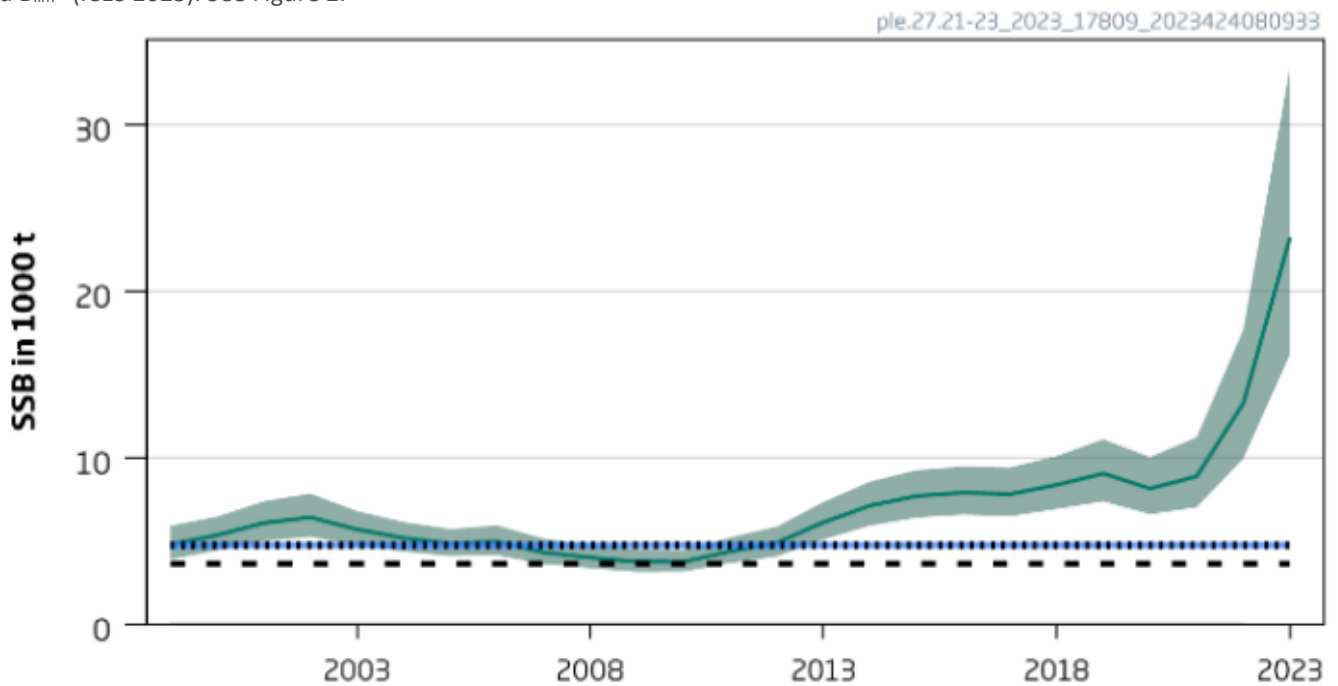


Figure 2. Plaice in ICES Subdivisions 3a.21-23, SSB relative to current reference points (ICES 2023)

Therefore, the species is considered, in its most recent stock assessment, to have a biomass above the limit reference point (or proxy) and it PASSES clause C1.2.

References

ICES (2023). Plaice (*Pleuronectes platessa*) in subdivisions 21–23 (Kattegat, Belt Seas, and the Sound). ICES Advice: Recurrent Advice. Report. <https://doi.org/10.17895/ices.advice.21820533.v1>

Links

MarinTrust Standard clause	1.3.2.2
FAO CCRF	7.5.3
GSSI	D.3.04, D5.01