



MarinTrust Standard V2

By-product Fishery Assessment Saithe (*Pollachius virens*) in FAO 27, ICES 5.b (Faroes grounds)

MarinTrust Programme

Unit C, Printworks

22 Amelia Street

London

SE17 3BZ

E: standards@marin-trust.com

T: +44 2039 780 819

Table 1 Application details and summary of the assessment outcome

Fishery Under Assessment	Species:	Saithe (<i>Pollachius virens</i>)
	Geographical area:	FAO Area 27 Northeast Atlantic
	Country of origin of the product:	Denmark (Flag countries: Faroe Island, Iceland)
	Stock:	Saithe in ICES division 5.b (Faroes grounds)
Date	3 April 2023	
Report Code	DNK17	
Assessor	Léa Lebechnech	
Country of origin of the product - PASS	Denmark (Flag countries: Faroe Island, Iceland)	
Country of origin of the product - FAIL	N/A	

Application details and summary of the assessment outcome			
Company Name(s): FF Skagen: Skagen: FF Skagen: Hanstholm: TripleNine Fish Protein a.m.b.a: Thyboron			
Country: Denmark			
Email address:		Applicant Code:	
Certification Body Details			
Name of Certification Body:		Global Trust Certification	
Assessor	Peer Reviewer	Assessment Days	Initial/Surveillance/ Re-approval
Léa Lebechnech	Matthew Jew	0.5	Surveillance 1
Assessment Period	To April 2023		

Scope Details	
Main Species	Saithe (<i>Pollachius virens</i>)
Stock	Saithe in ICES division 5.b (Faroes grounds)
Fishery Location	FAO Area 27 Northeast Atlantic
Management Authority (Country/ State)	European Union (Common Fisheries Policy-CFP), Danish Directorate of Fisheries (<i>Fiskeristyrelsen</i>), Faroe Islands
Gear Type(s)	Pair trawls, others
Outcome of Assessment	
Peer Review Evaluation	Agree with assessor's recommendation
Recommendation	APPROVED

Table 2. Assessment Determination

Assessment Determination
<p>If any species is categorised as Endangered or Critically Endangered on the IUCN Red List, or if it appears in the CITES appendices, it cannot be approved for use as Marin Trust raw material. Saithe (<i>Pollachius virens</i>) does not appear as Endangered or Critically Endangered on the IUCN Red List, nor does it appear in the CITES appendices; therefore, Saithe in ICES Division 5.b (Faroes grounds) is eligible for approval for use as Marin Trust raw material.</p> <p>There is a species-specific management regime in place for this stock including a stock assessment with reference points defined and a TAC set and therefore, the stock was assessed under Category C.</p> <p>In the last stock assessment, removals are considered and the stock is above its limit reference point B_{lim}, therefore the stock PASSES clauses C1.1 and C1.2.</p> <p>Consequently, Saithe (<i>Pollachius virens</i>) in ICES Division 5.b (Faroes grounds) is APPROVED for the production of fishmeal and fish oil under the Marin Trust Standard v.2.</p>
Fishery Assessment Peer Review Comments
<p>The assessor correctly classified saithe (<i>Pollachius virens</i>) in ICES Division 5.b (Faroes grounds) as Category C, the stock is subject to a specific management regime and reference points are defined.</p> <p>Fishery removals are considered in the stock assessment process. The most recent stock assessment shows that the stock is above $MSY B_{trigger}$, B_{pa}, and B_{lim}. Therefore, the stock is considered to have biomass above the limit reference point.</p> <p>Saithe (<i>Pollachius virens</i>) in ICES Division 5.b (Faroes grounds) passes both clauses (C1.1 and C1.2) and therefore should be approved under the MarinTrust Standard v.2.</p>
Notes for On-site Auditor
N/A

Species Categorisation

NB: If any species is categorised as Endangered or Critically Endangered on the IUCN Red List, or if it appears in CITES Appendix 1, it **cannot** be approved for use as a MarinTrust raw material.

IUCN Red list Category

By-product material from a species listed by IUCN (the International Union for Conservation of Nature) under the Red List for the following categories shall immediately fail the assessment;

- EXTINCT (E) AND EXTINCT IN THE WILD (EW)
- CRITICALLY ENDANGERED (CR) facing an extremely high risk of extinction in the wild.
- ENDANGERED (EN) facing a very high risk of extinction in the wild.

By-product material may be used from the following categories provided that all clauses in the MarinTrust standard are passed.

- VULNERABLE (VU) facing a high risk of extinction in the wild.
- NEAR THREATENED (NT) does not qualify for above now, but is close or is likely to qualify for, a threatened category in the near future.
- LEAST CONCERN (LC) Widespread and abundant.
- DATA DEFICIENT (DD) and NOT EVALUATED (NE)

Table 3 Species Categorisation Table

Common name	Latin name	Stock	Management	Category	IUCN Red List Category ¹	CITES Appendix 1 ²
Saithe	<i>Pollachius virens</i>	Saithe in ICES Division 5.b (Faroes grounds)	European Union (CFP), Danish Directorate of Fisheries (<i>Fiskeristyrelsen</i>), Faroe Islands	C	LC ³	No

¹ <https://www.iucnredlist.org/>

² <https://cites.org/eng/app/appendices.php>

³ <https://www.iucnredlist.org/species/190304/45098360>

CATEGORY C SPECIES

In a by-product assessment, Category C species are those which are subject to a species-specific management regime and are usually targeted species in fisheries for human consumption.

Clause C1 should be completed for each Category C species. If there are no Category C species in the fishery under assessment, this section can be deleted. Where a species fails this Clause, it should be assessed as a Category D species instead.

Species Name		Saithe (<i>Pollachius virens</i>)	
C1	Category C Stock Status - Minimum Requirements		
	C1.1	Fishery removals of the species in the fishery under assessment are included in the stock assessment process, OR are considered by scientific authorities to be negligible.	Yes
	C1.2	The species is considered, in its most recent stock assessment, to have a biomass above the limit reference point (or proxy), OR removals by the fishery under assessment are considered by scientific authorities to be negligible.	Yes
			Clause outcome: PASS
<p>C1.1 Fishery removals of the species in the fishery under assessment are included in the stock assessment process, OR are considered by scientific authorities to be negligible.</p> <p>ICES advises that when the MSY approach is applied, catches in 2023 should be no more than 17 843 tonnes. ICES is not in a position to advise on the corresponding level of fishing effort. The catch advice for 2023 is lower compared to the advice for 2022 due to the lower estimate of biomass.</p> <p>The assessment type is a state-space model (SAM) using catches in the model and in the forecast (ICES, 2022). The input data considered in the last stock assessment are the following: Commercial catches (mainly Faroese catches, ages and length frequencies from catch sampling); Faroese bottom-trawl surveys FO-GFS-Q1 (G1264) and FO-GFS-Q3 (G3284); annual maturity data from FO-GFS-Q1 (G1264); natural mortality set at $M = 0.2$. Discarding is considered negligible.</p> <p>Catches are presented in the figure below:</p> <div style="text-align: center;"> </div> <p>Figure 1. Saithe in division 5.b (Faroese grounds). Catches in 2022 are assumed. Source: ICES, 2022.</p>			
<p>Therefore, fishery removals of the species in the fishery under assessment are included in the stock assessment process and therefore the stock PASSES clause C1.1.</p>			
<p>C1.2 The species is considered, in its most recent stock assessment, to have a biomass above the limit reference point (or proxy), OR removals by the fishery under assessment are considered by scientific authorities to be negligible.</p>			

Fishing pressure on the stock is below F_{MSY} and spawning-stock size is above $B_{trigger}$, B_{pa} and B_{lim} .

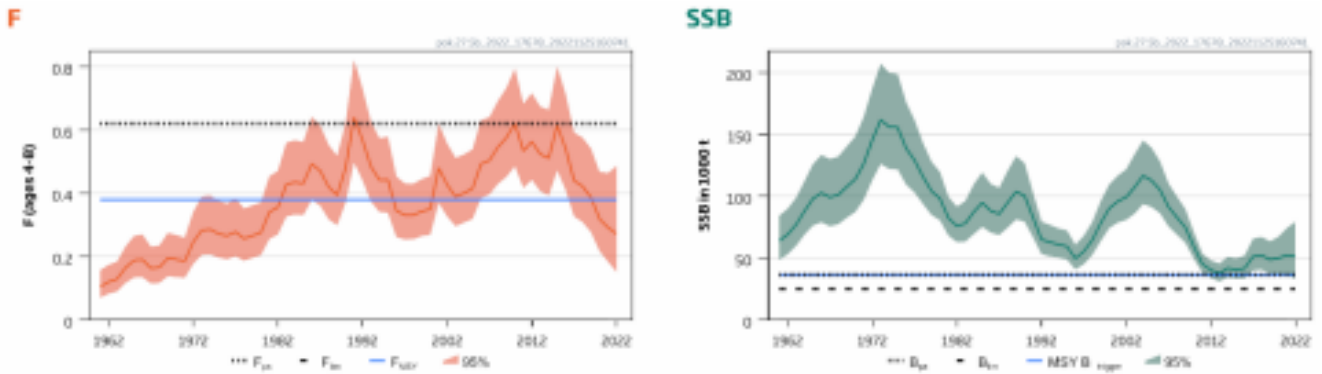


Figure 2. Saithe in division 5.b (Faroes ground). Summary of the stock assessment. The assessment produces an estimate of F in 2022.

Source: ICES, 2022.

Therefore, the species is considered, in its most recent stock assessment, to have a biomass above the limit reference point and it PASSES clause C1.2.

References

ICES, 2022. Saithe (*Pollachius virens*) in Division 5.b (Faroes grounds). In Report of the ICES Advisory Committee, 2022. ICES Advice 2022, pok.27.5b, <https://doi.org/10.17895/ices.advice.19772458>

Links

MarinTrust Standard clause	1.3.2.2
FAO CCRF	7.5.3
GSSI	D.3.04, D5.01