



MarinTrust Standard V2

By-product Fishery Assessment *ESP11 European pilchard in ICES Subarea 7 and Division 8a,b,d*

MarinTrust Programme

Unit C, Printworks

22 Amelia Street

London

SE17 3BZ

E: standards@marin-trust.com

T: +44 2039 780 819

Table 1 Application details and summary of the assessment outcome

Fishery Under Assessment	Species:	European pilchard, <i>Sardina pilchardus</i>
	Geographical area:	FAO 27
	Country of origin of the product:	Spain, Portugal
	Stock:	ICES Subarea 7; ICES Division 8a,b,d
Date	May 2023	
Report Code	ESP11	
Assessor	Sam Peacock	
Country of origin of the product - PASS	Spain, Portugal	
Country of origin of the product - FAIL	None	

Application details and summary of the assessment outcome			
Company Name(s): Sarval Bio-Industries Noroeste S.A.U. S.A.U: Arteixo			
Country:			
Email address:		Applicant Code:	
Certification Body Details			
Name of Certification Body:		LRQA	
Assessor	Peer Reviewer	Assessment Days	Initial/Surveillance/ Re-approval
Sam Peacock	Jose Piero Crespo	0.2	Surveillance 2
Assessment Period	May 2023 – May 2024		

Scope Details	
Main Species	European pilchard, <i>Sardina pilchardus</i>
Stock	ICES Subarea 7; ICES Division 8a,b,d
Fishery Location	FAO 27
Management Authority (Country/ State)	GFCM
Gear Type(s)	Purse seine & pelagic trawl
Outcome of Assessment	
Peer Review Evaluation	Pass
Recommendation	Pass

Table 2. Assessment Determination

Assessment Determination
<p>This assessment covers two stocks: European pilchard in ICES Subarea 7, and European pilchard in Divisions 8a, b and d. These stocks are assessed separately by ICES.</p> <p>European pilchard has been categorised by the IUCN as Near Threatened and does not appear in the CITES appendices. The stock in Divisions 8a,b,d is managed relative to reference points and has been assessed under Category C. No reference points have been established for the stock in Subarea 7, which has been assessed under Category D.</p> <p>Pilchard in Divisions 8a,b,d was most recently subjected to a stock assessment in 2022, which incorporated commercial catch data and concluded that discarding and bycatch was negligible. The assessment also determined that while SSB was below the target reference points, it was above the limit reference point.</p> <p>Pilchard in Subarea 7 was awarded a Productivity score of 1.14 and a Susceptibility score of 2.5, leading to a rating of Pass against Table D3.</p> <p>For these reasons, both stocks should be approved against the MT requirements.</p>
Fishery Assessment Peer Review Comments
<p>The by-product fishery under assessment is the European pilchard (<i>Sardina pilchardus</i>) caught using purse seine and pelagic trawls in ICES Subarea 7 (Celtic Seas and the English Channel) and in Divisions 8a, b and d (Bay of Biscay). European pilchard is classified as NT in the IUCN red list. In ICES divisions a, b and d, the species is managed relative to biomass-based reference points and therefore assessed under category C. However, in ICES subarea 7 no biomass-based reference points have been established and it is assessed under category D (productivity-susceptibility analysis).</p> <p>European pilchard in Divisions 8a,b,d was last assessed by ICES in 2022. That assessment indicates that the spawning-stock size is below MSY Btrigger and Bpa but above Blim (limit reference point). Therefore, the stock passes category C.</p> <p>In the case of European pilchard in ICES subarea 7, a PSA analysis was conducted, the scoring table has been completed by the auditor, and sufficient evidence given to justify the scores and the final determination. The stock passes category D.</p> <p>The peer review supports the auditor’s recommendation to pass the European pilchard purse seine and pelagic trawls fishery in ICES Subarea 7 and in Divisions 8a, b and d under the Marin Trust IFFO RS v2.0 by-fishery standard for the production of fishmeal and fish oil.</p>
Notes for On-site Auditor

Species Categorisation

NB: If any species is categorised as Endangered or Critically Endangered on the IUCN Red List, or if it appears in CITES Appendix 1, it **cannot** be approved for use as a MarinTrust raw material.

IUCN Red list Category

By-product material from a species listed by IUCN (the International Union for Conservation of Nature) under the Red List for the following categories shall immediately fail the assessment;

- EXTINCT (E) AND EXTINCT IN THE WILD (EW)
- CRITICALLY ENDANGERED (CR) facing an extremely high risk of extinction in the wild.
- ENDANGERED (EN) facing a very high risk of extinction in the wild.

By-product material may be used from the following categories provided that all clauses in the MarinTrust standard are passed.

- VULNERABLE (VU) facing a high risk of extinction in the wild.
- NEAR THREATENED (NT) does not qualify for above now, but is close or is likely to qualify for, a threatened category in the near future.
- LEAST CONCERN (LC) Widespread and abundant.
- DATA DEFICIENT (DD) and NOT EVALUATED (NE)

Table 3 Species Categorisation Table

Common name	Latin name	Stock	Management	Category	IUCN Red List Category ¹	CITES Appendix 1 ²
European pilchard	<i>Sardina pilchardus</i>	ICES Subarea 7	No	D	Near Threatened ³	No
European pilchard	<i>Sardina pilchardus</i>	ICES Division 8a,b,d	Yes	C	Near Threatened ⁴	No

¹ <https://www.iucnredlist.org/>

² <https://cites.org/eng/app/appendices.php>

³ <https://www.iucnredlist.org/species/198580/45075369>

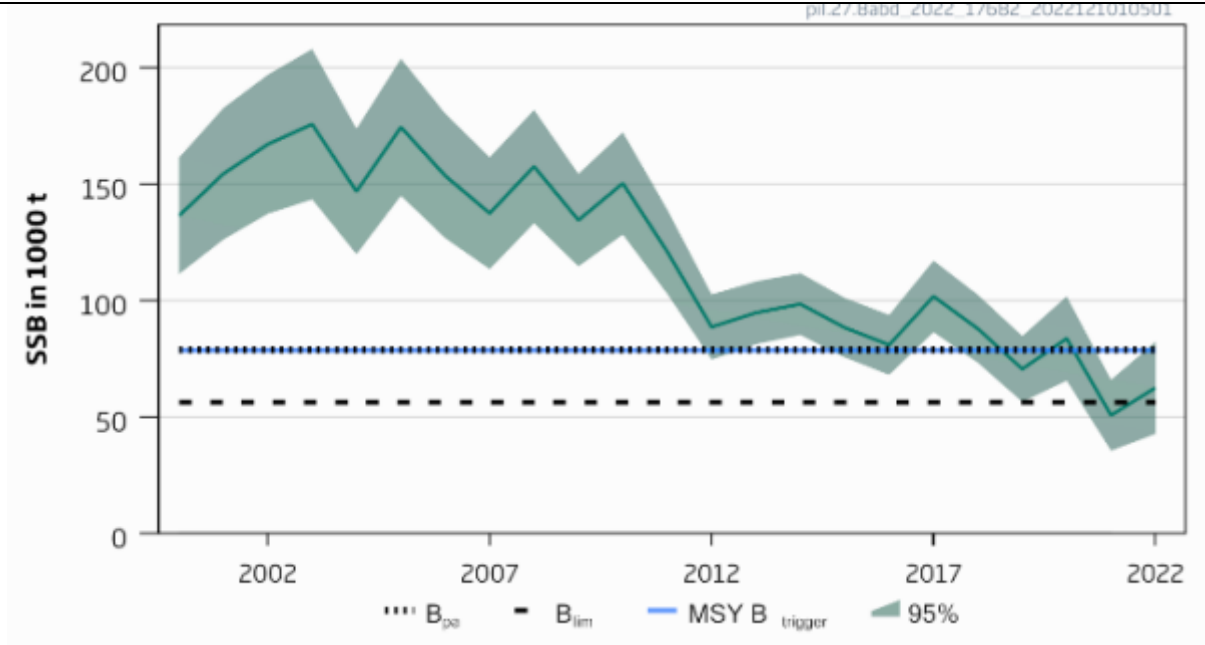
⁴ <https://www.iucnredlist.org/species/198580/45075369>

CATEGORY C SPECIES

In a by-product assessment, Category C species are those which are subject to a species-specific management regime and are usually targeted species in fisheries for human consumption.

Clause C1 should be completed for each Category C species. If there are no Category C species in the fishery under assessment, this section can be deleted. Where a species fails this Clause, it should be assessed as a Category D species instead.

Species Name		European pilchard in ICES Divisions 8a,b,d	
C1	Category C Stock Status - Minimum Requirements		
	C1.1	Fishery removals of the species in the fishery under assessment are included in the stock assessment process, OR are considered by scientific authorities to be negligible.	PASS
	C1.2	The species is considered, in its most recent stock assessment, to have a biomass above the limit reference point (or proxy), OR removals by the fishery under assessment are considered by scientific authorities to be negligible.	PASS
			Clause outcome: PASS
<p>C1.1 Fishery removals of the species in the fishery under assessment are included in the stock assessment process, OR are considered by scientific authorities to be negligible.</p> <p>The stock is subject to annual stock assessment by the ICES Working Group on Southern Horse Mackerel, Anchovy and Sardine (WGHANSA). The assessment was most recently conducted in 2022 using an analytical assessment that uses catches in the model and forecast and incorporates data from multiple surveys (ICES 2022). The stock was most recently benchmarked in 2021. Discarding and bycatch is considered negligible.</p> <p>Fishery removals are considered during the stock assessment process, and C1.1 is met.</p> <p>C1.2 The species is considered, in its most recent stock assessment, to have a biomass above the limit reference point (or proxy), OR removals by the fishery under assessment are considered by scientific authorities to be negligible.</p> <p>The 2022 catch advice provides an indication of the current status of the stock relative to established reference points. The target reference points $MSY B_{trigger}$ and B_{pa} have been set at 78,700t. The limit reference point B_{lim} is set at 56,300t. The 2022 catch advice projected SSB in 2023 to be 69,828t, and stated that “spawning-stock size is below $MSY B_{trigger}$ and B_{pa}, and above B_{lim}” (ICES 2022).</p> <p>The stock is considered in its most recent stock assessment to have a biomass above the limit reference point, and C1.2 is met.</p>			



European pilchard in Divisions 8a,b,d, SSB relative to current reference points (ICES 2022)

References


ICES (2022). Sardine (*Sardina pilchardus*) in divisions 8.a-b and 8.d (Bay of Biscay). In Report of the ICES Advisory Committee, 2022. ICES Advice 2022, pil.27.8abd, <https://doi.org/10.17895/ices.advice.19772452>

Links

MarinTrust Standard clause	1.3.2.2
FAO CCRF	7.5.3
GSSI	D.3.04, D5.01

CATEGORY D SPECIES

Category D species are those which are not subject to a species-specific management regime. In the case of mixed trawl fisheries, Category D species may make up the majority of landings. The comparative lack of scientific information on the status of the population of the species means that a risk-assessment style approach must be taken.

D1	Species Name		European pilchard in Subarea 7		
	Productivity Attribute		Value	Score	
	Average age at maturity (years)		2 years	1	
	Average maximum age (years)		7 years	1	
	Fecundity (eggs/spawning)		156,525	1	
	Average maximum size (cm)		27.5cm	1	
	Average size at maturity (cm)		11.8cm	1	
	Reproductive strategy		Broadcast spawner	1	
	Mean trophic level		3.1	2	
	Average Productivity Score			1.14	
	Susceptibility Attribute		Value	Score	
	Availability (area overlap)		<10% overlap	1	
	Encounterability (the position of the stock/species within the water column relative to the fishing gear)		Targeted	3	
	Selectivity of gear type		Retained	3	
	Post-capture mortality		Retained	3	
	Average Susceptibility Score			2.5	
	PSA Risk Rating (From Table D3)			PASS	
	Compliance rating			PASS	
	Further justification for susceptibility scoring (where relevant)				
	<i>For susceptibility attributes, please provide a brief rationale for scoring of parameters where there may be uncertainty affecting your decision</i>				
					
European pilchard distribution, from Fishbase (https://www.fishbase.se/summary/1350)					

References

Fishbase, European pilchard: <https://www.fishbase.se/summary/1350>

Standard clauses 1.3.2.2

Table D2 - Productivity / Susceptibility attributes and scores.

Productivity attributes	High productivity (Low risk, score = 1)	Medium productivity (medium risk, score = 2)	Low productivity (high risk, score = 3)
Average age at maturity	<5 years	5-15 years	>15 years
Average maximum age	<10 years	10-25 years	>25 years
Fecundity	>20,000 eggs per year	100-20,000 eggs per year	<100 eggs per year
Average maximum size	<100 cm	100-300 cm	>300 cm
Average size at maturity	<40 cm	40-200 cm	>200 cm
Reproductive strategy	Broadcast spawner	Demersal egg layer	Live bearer
Mean Trophic Level	<2.75	2.75-3.25	>3.25

Susceptibility attributes	Low susceptibility (Low risk, score = 1)	Medium susceptibility (medium risk, score = 2)	High susceptibility (high risk, score = 3)
Areal overlap (availability) Overlap of the fishing effort with the species range	<10% overlap	10-30% overlap	>30% overlap
Encounterability The position of the stock/species within the water column relative to the fishing gear, and the position of the stock/species within the habitat relative to the position of the gear	Low overlap with fishing gear (low encounterability).	Medium overlap with fishing gear.	High overlap with fishing gear (high encounterability). Default score for target species
Selectivity of gear type Potential of the gear to retain species	a Individuals < size at maturity are rarely caught	a Individuals < size at maturity are regularly caught.	a Individuals < size at maturity are frequently caught
	b Individuals < size at maturity can escape or avoid gear.	b Individuals < half the size at maturity can escape or avoid gear.	b Individuals < half the size at maturity are retained by gear.
Post-capture mortality (PCM) The chance that, if captured, a species would be released and that it would be in a condition permitting subsequent survival	Evidence of majority released post-capture and survival.	Evidence of some released post-capture and survival.	Retained species or majority dead when released.

D3		Average Susceptibility Score		
		1 - 1.75	1.76 - 2.24	2.25 - 3
Average Productivity Score	1 - 1.75	PASS	PASS	PASS
	1.76 - 2.24	PASS	PASS	TABLE D4
	2.25 - 3	PASS	TABLE D4	TABLE D4

D4 Species Name			
Impacts On Species Categorised as Vulnerable by D1-D3 - Minimum Requirements			
D4.1	The potential impacts of the fishery on this species are considered during the management process, and reasonable measures are taken to minimise these impacts.		
D4.2	There is no substantial evidence that the fishery has a significant negative impact on the species.		
			Outcome:
Evidence			
D4.1: The potential impacts of the fishery on this species are considered during the management process, and reasonable measures are taken to minimise these impacts.			
D4.2 There is no substantial evidence that the fishery has a significant negative impact on the species.			
References			
Links			
MarinTrust Standard clause		1.3.2.2, 4.1.4	
FAO CCRF		7.5.1	
GSSI		D.5.01	