



## MarinTrust Standard V2

# By-product Fishery Assessment FRA01 – Greenland Halibut (*Reinhardtius hippoglossoides*) in ICES Subareas 5, 6, 12 and 14

### MarinTrust Programme

Unit C, Printworks

22 Amelia Street

London

SE17 3BZ

E: [standards@marin-trust.com](mailto:standards@marin-trust.com)

T: +44 2039 780 819

**Table 1 Application details and summary of the assessment outcome**

Fishery Under Assessment	Species:	Greenland halibut, <i>Reinhardtius hippoglossoides</i>
	Geographical area:	FAO Area 27, Northeast Atlantic
	Country of origin of the product:	Denmark
	Stock:	ICES Subareas 5, 6, 12 and 14
Date	February 2024	
Report Code	FRA01	
Assessor	Sam Peacock	
Country of origin of the product - PASS	France	
Country of origin of the product - FAIL	None	

Application details and summary of the assessment outcome			
Company Name(s): Copalis Industrie			
Country: France			
Email address:		Applicant Code:	
Certification Body Details			
Name of Certification Body:		Global Trust Certification Ltd. / NSF	
Assessor	Peer Reviewer	Assessment Days	Initial/Surveillance/ Re-approval
Sam Peacock	Léa Lebechnech	0.2	Re-approval
Assessment Period	February 2024 – February 2025		

Scope Details	
Main Species	Greenland halibut, <i>Reinhardtius hippoglossoides</i>
Stock	ICES Subareas 5, 6, 12 and 14
Fishery Location	FAO Area 27, Northeast Atlantic
Management Authority (Country/ State)	EU, UK, Norway, Iceland
Gear Type(s)	All gear types
Outcome of Assessment	
Peer Review Evaluation	Agree with the assessor's determination
Recommendation	APPROVED

## Table 2. Assessment Determination

Assessment Determination
<p>If any species is categorised as Endangered or Critically Endangered on IUCN’s Red List, or if it appears in the CITES appendices, it cannot be approved for use as Marin trust raw material. Greenland halibut (<i>Reinhardtius hippoglossoides</i>) has been categorised by the IUCN as Near Threatened, and it does not appear in the CITES appendices. Therefore, <i>Reinhardtius hippoglossoides</i> is eligible for approval for use as Marin trust by-product raw material.</p> <p>Greenland halibut in ICES Subareas 5, 6, 12 and 14 is managed relative to established reference points, and a large proportion of the catch is covered by annual TACs. For these reasons, the byproduct was assessed under Category C.</p> <p>Greenland halibut is subjected to annual stock assessment by the ICES Northwestern Working Group, using all international catch data. The most recent stock assessment was conducted in 2023 and concluded that stock biomass is above both the limit and target reference point levels. C1.1 and C1.2 are met.</p> <p>Therefore, Greenland halibut (<i>Reinhardtius hippoglossoides</i>) in ICES Subareas 5, 6, 12 and 14 is <b>APPROVED</b> for the production of fishmeal and fish oil under the current MarinTrust v2.3 by-products.</p>
Fishery Assessment Peer Review Comments
<p>The assessor correctly classified Greenland halibut (<i>Reinhardtius hippoglossoides</i>) in ICES Subareas 5, 6, 12 and 14 as Category C, because the stock is subject to a specific management regime and reference points are defined.</p> <p>Fishery removals are considered in the stock assessment process and the most recent stock assessment shows that the stock is above limit reference point. Therefore, the stock is considered to satisfy C1.1. and C1.2.</p> <p>In conclusion, Greenland halibut in ICES Subareas 5, 6, 12 and 14 passes both clauses (C1.1 and C1.2) and therefore should be approved under the MarinTrust Standard v2.3.</p>
Notes for On-site Auditor
N/A

## Species Categorisation

**NB:** If any species is categorised as Endangered or Critically Endangered on the IUCN Red List, or if it appears in CITES Appendix 1, it **cannot** be approved for use as an MarinTrust raw material.

### IUCN Red list Category

By-product material from a species listed by IUCN (the International Union for Conservation of Nature) under the Red List for the following categories shall immediately fail the assessment;

- EXTINCT (E) AND EXTINCT IN THE WILD (EW)
- CRITICALLY ENDANGERED (CR) facing an extremely high risk of extinction in the wild.
- ENDANGERED (EN) facing a very high risk of extinction in the wild.

By-product material may be used from the following categories provided that all clauses in the MarinTrust standard are passed.

- VULNERABLE (VU) facing a high risk of extinction in the wild.
- NEAR THREATENED (NT) does not qualify for above now, but is close or is likely to qualify for, a threatened category in the near future.
- LEAST CONCERN (LC) Widespread and abundant.
- DATA DEFICIENT (DD) and NOT EVALUATED (NE)

## Table 3 Species Categorisation Table

Common name	Latin name	Stock	Management	Category	IUCN Red List Category <sup>1</sup>	CITES Appendix 1 <sup>2</sup>
Greenland halibut	<i>Reinhardtius hippoglossoides</i>	ICES Subareas 5, 6, 12 and 14	Yes	C	Near Threatened <sup>3</sup>	No

<sup>1</sup> <https://www.iucnredlist.org/>

<sup>2</sup> <https://cites.org/eng/app/appendices.php>

<sup>3</sup> <https://www.iucnredlist.org/species/18227054/148037259>

## CATEGORY C SPECIES

In a by-product assessment, Category C species are those which are subject to a species-specific management regime and are usually targeted species in fisheries for human consumption.

Clause C1 should be completed for each Category C species. If there are no Category C species in the fishery under assessment, this section can be deleted. Where a species fails this Clause, it should be assessed as a Category D species instead.

<b>Species Name</b>		<b>Greenland halibut (<i>Reinhardtius hippoglossoides</i>)</b>	
<b>C1</b>	<b>Category C Stock Status - Minimum Requirements</b>		
	<b>C1.1</b>	Fishery removals of the species in the fishery under assessment are included in the stock assessment process, OR are considered by scientific authorities to be negligible.	PASS
	<b>C1.2</b>	The species is considered, in its most recent stock assessment, to have a biomass above the limit reference point (or proxy), OR removals by the fishery under assessment are considered by scientific authorities to be negligible.	PASS
			<b>Clause outcome:</b> <b>PASS</b>

**C1.1 Fishery removals of the species in the fishery under assessment are included in the stock assessment process, OR are considered by scientific authorities to be negligible.**

Greenland halibut in ICES Subareas 5, 6, 12 and 14 is subject to annual stock assessment by the ICES Northwestern Working Group (NWWG). The most recent stock assessment was carried out in 2023 using an analytical assessment which incorporated catches in the model and forecast. Additional data utilised included length composition by gear, a combined survey index, and age and length distributions from bottom-trawl surveys. Discarding is considered by scientists to be negligible. The catch advice notes that there may be multiple populations within the stock assessment area, but also that the benchmarking of the stock in 2023 has improved the robustness of the assessment.

“ICES advises that when the MSY approach is applied, catches in 2024 should be no more than 21,541 tonnes” (ICES 2023). See Figure 1 for catches.

Overall the outcomes of the assessment are considered reliable.

### Catches

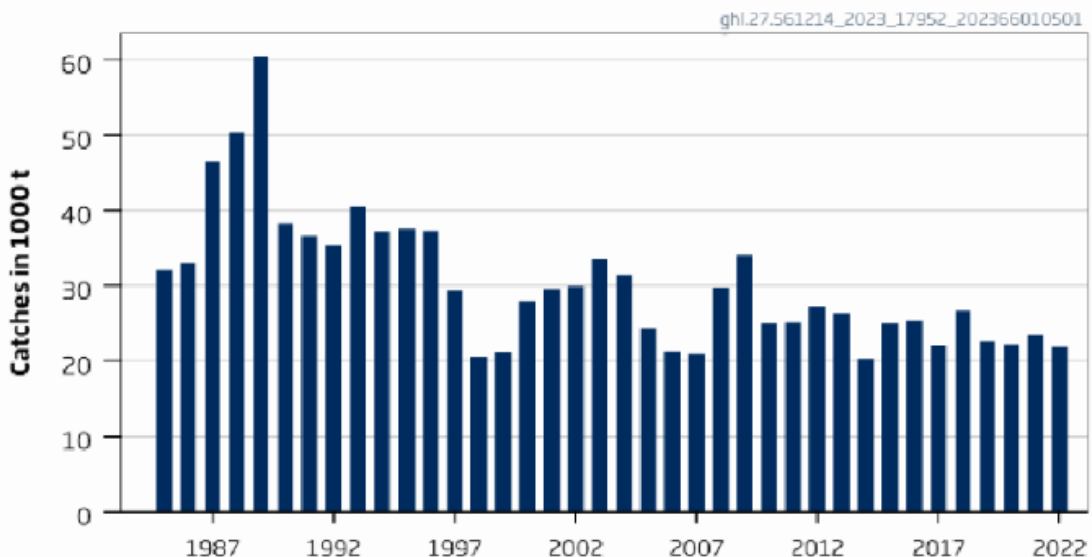
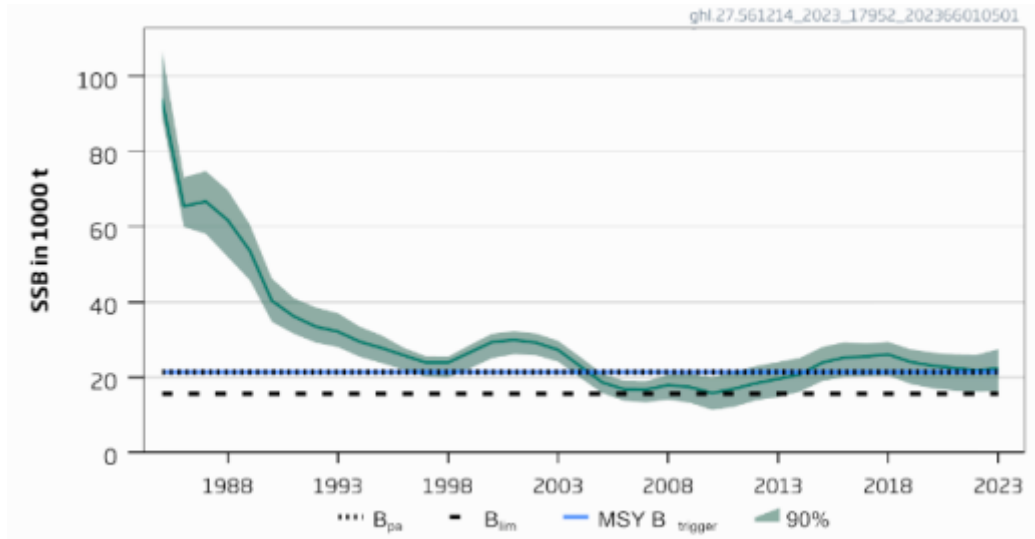


Figure 1. Greenland halibut in ICES Subareas 5, 6, 12 and 14, catches (ICES 2023).

Therefore, fishery removals of the species in the fishery under assessment are included in the stock assessment process and therefore the stock PASSES clause C1.1.

**C1.2 The species is considered, in its most recent stock assessment, to have a biomass above the limit reference point (or proxy), OR removals by the fishery under assessment are considered by scientific authorities to be negligible.**

The annual ICES catch advice provides an indication of the current status of the stock relative to the established reference points. The target reference points MSY  $B_{trigger}$  and  $B_{pa}$  have been set at 21,402t. The limit reference point  $B_{lim}$  has been set at 15,657t. The 2023 stock assessment produced a short-term projection for SSB in 2024 of 22,796t, above the target and limit reference point levels. Additionally, the 2023 catch advice stated that “spawning-stock size is above MSY  $B_{trigger}$ ,  $B_{pa}$ , and  $B_{lim}$ ” (ICES 2023). See figure 2 for current and historical biomass estimates.



**Figure 2.** Greenland halibut in ICES Subareas 5, 6, 12 and 14, estimated SSB relative to current reference points (ICES 2023).

**Therefore, the species is considered, in its most recent stock assessment, to have a biomass above the limit reference point (or proxy) and it PASSES clause C1.2.**

**References**

ICES (2023). Greenland halibut (*Reinhardtius hippoglossoides*) in subareas 5, 6, 12, and 14 (Iceland and Faroes grounds, West of Scotland, North of Azores, East of Greenland). In Report of the ICES Advisory Committee, 2023. ICES Advice 2023, ghl.27.561214, <https://doi.org/10.17895/ices.advice.21828333>

**Links**

<b>MarinTrust Standard clause</b>	1.3.2.2
<b>FAO CCRF</b>	7.5.3
<b>GSSI</b>	D.3.04, D5.01