



MarinTrust Standard V2

By-product Fishery Assessment

Mackerel in ICES Subareas 1-8 & 14, and Division 9.a (France)

MarinTrust Programme

Unit C, Printworks

22 Amelia Street

London

SE17 3BZ

E: standards@marin-trust.com

T: +44 2039 780 819

Table 1 Application details and summary of the assessment outcome

| | | |
|---|-----------------------------------|--|
| Fishery Under Assessment | Species: | Mackerel (<i>Scomber scombrus</i>) |
| | Geographical area: | ICES Subareas 1-8 and 14, and Division 9a |
| | Country of origin of the product: | France |
| | Stock: | Mackerel in the Northeast Atlantic and Adjacent Waters |
| Date | January 2023 | |
| Report Code | FRA02 | |
| Assessor | Sam Peacock | |
| Country of origin of the product - PASS | France | |
| Country of origin of the product - FAIL | None | |

| Application details and summary of the assessment outcome | | | |
|---|-----------------------------|-----------------|-----------------------------------|
| Company Name(s): Copalis Industrie | | | |
| Country: France | | | |
| Email address: | | Applicant Code: | |
| Certification Body Details | | | |
| Name of Certification Body: | | LRQA | |
| Assessor | Peer Reviewer | Assessment Days | Initial/Surveillance/ Re-approval |
| Sam Peacock | Kate Morris | 0.2 | Re-Approval |
| Assessment Period | January 2023 – January 2024 | | |

| Scope Details | |
|---------------------------------------|--|
| Main Species | Mackerel (<i>Scomber scombrus</i>) |
| Stock | Mackerel in the Northeast Atlantic and Adjacent Waters |
| Fishery Location | ICES Subareas 1-8 and 14, and Division 9a |
| Management Authority (Country/ State) | EU, UK, Norway |
| Gear Type(s) | Pelagic trawl, purse seine, others |
| Outcome of Assessment | |
| Peer Review Evaluation | PASS |
| Recommendation | PASS |

Table 2. Assessment Determination

| Assessment Determination |
|--|
| <p>Mackerel has been categorised by the IUCN Red List as a species of Least Concern, and it does not appear in the CITES appendices. Mackerel in the Northeast Atlantic and adjacent waters are managed using annual quotas relative to established reference points and therefore was assessed under Category C.</p> <p>This mackerel stock is subject to an annual stock assessment by ICES, the most recent of which was conducted in 2022. This assessment incorporated landings data and discard estimates and concluded that SSB is currently substantially above the target and has limit reference points. Therefore, this by-product meets the MT requirements and should be re-approved for use as a raw material.</p> |
| Fishery Assessment Peer Review Comments |
| <p>The by-product fishery under assessment here is the Atlantic Mackerel (<i>Scomber scombrus</i>) fishery, pursued by fishing vessels in FAO fishing area 27, ICES area 1-4, 9a and 14. Mackerel is managed to species-specific reference points, so for this assessment, mackerel is assessed as a category C species. Mackerel meets the requirements detailed in C1.</p> <p>All species scoring tables have been completed by the auditor with sufficient evidence presented to support their final determination.</p> <p>The peer review supports the auditor’s recommendation to PASS the ICES 1-8, 9a and 14, mackerel stock under the Marin Trust IFFO RS v2.0 by-fishery standard to produce fishmeal and fish oil.</p> |
| Notes for On-site Auditor |
| |

Species Categorisation

NB: If any species is categorised as Endangered or Critically Endangered on the IUCN Red List, or if it appears in CITES Appendix 1, it **cannot** be approved for use as an MarinTrust raw material.

IUCN Red list Category

By-product material from a species listed by IUCN (the International Union for Conservation of Nature) under the Red List for the following categories shall immediately fail the assessment;

- EXTINCT (E) AND EXTINCT IN THE WILD (EW)
- CRITICALLY ENDANGERED (CR) facing an extremely high risk of extinction in the wild.
- ENDANGERED (EN) facing a very high risk of extinction in the wild.

By-product material may be used from the following categories provided that all clauses in the MarinTrust standard are passed.

- VULNERABLE (VU) facing a high risk of extinction in the wild.
- NEAR THREATENED (NT) does not qualify for above now, but is close or is likely to qualify for, a threatened category in the near future.
- LEAST CONCERN (LC) Widespread and abundant.
- DATA DEFICIENT (DD) and NOT EVALUATED (NE)

Table 3 Species Categorisation Table

| Common name | Latin name | Stock | Management | Category | IUCN Red List Category ¹ | CITES Appendix 1 ² |
|-------------|-------------------------|--|------------|----------|-------------------------------------|-------------------------------|
| Mackerel | <i>Scomber scombrus</i> | Northeast Atlantic and Adjacent Waters | Yes | C | Least Concern ³ | No |

¹ <https://www.iucnredlist.org/>

² <https://cites.org/eng/app/appendices.php>

³ <https://www.iucnredlist.org/species/170354/18207463>

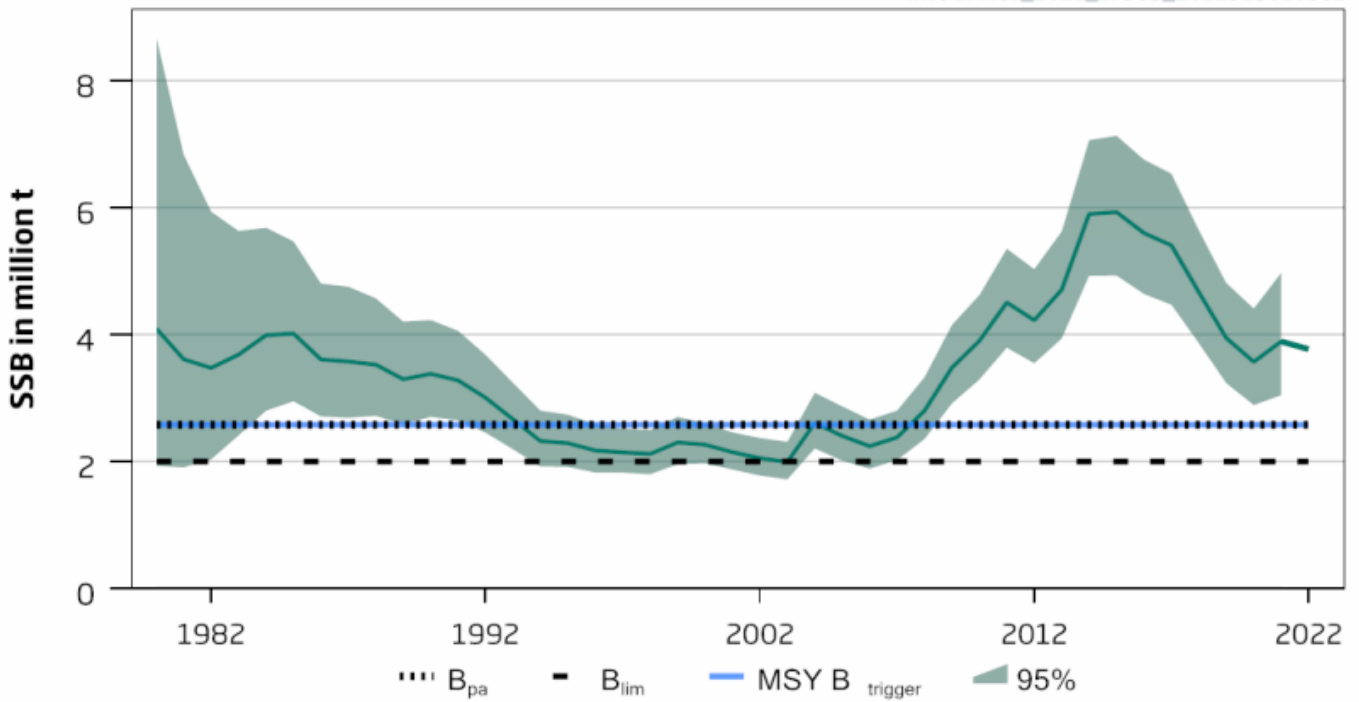
CATEGORY C SPECIES

In a by-product assessment, Category C species are those which are subject to a species-specific management regime and are usually targeted species in fisheries for human consumption.

Clause C1 should be completed for each Category C species. If there are no Category C species in the fishery under assessment, this section can be deleted. Where a species fails this Clause, it should be assessed as a Category D species instead.

| Species Name | | Mackerel | |
|--|--|--|----------------------|
| C1 | Category C Stock Status - Minimum Requirements | | |
| | C1.1 | Fishery removals of the species in the fishery under assessment are included in the stock assessment process, OR are considered by scientific authorities to be negligible. | PASS |
| | C1.2 | The species is considered, in its most recent stock assessment, to have a biomass above the limit reference point (or proxy), OR removals by the fishery under assessment are considered by scientific authorities to be negligible. | PASS |
| | | | Clause outcome: PASS |
| <p>C1.1 Fishery removals of the species in the fishery under assessment are included in the stock assessment process, OR are considered by scientific authorities to be negligible.</p> <p>A stock assessment for mackerel in the Northeast Atlantic is conducted annually by the ICES Working Group on Widely Distributed Stocks (WGWIDE). The outcomes of the most recent stock assessment were published in September 2022. The assessment used an age-based analytical model which incorporated catches in both the model and the forecast. Partial discarding estimates were also included, although discards are assumed to be negligible overall. The September 2022 catch advice includes a section discussing the quality of the stock assessment, which noted that only preliminary catch data was available for the Russian Federation, along with some other potential sources of uncertainty (ICES 2022). However, there is no indication that the outcomes of the assessment are likely to be unreliable overall. Fishery removals are included in the assessment and C1.1 is met.</p> <p>C1.2 The species is considered, in its most recent stock assessment, to have a biomass above the limit reference point (or proxy), OR removals by the fishery under assessment are considered by scientific authorities to be negligible.</p> <p>The 2022 catch advice provides an indication of the status of the stock relative to established reference points. The target reference points $MSY B_{trigger}$ and B_{pa} are set at 2,580,000t. The limit reference point B_{lim} is set at 2,000,000t. The catch advice projected that SSB at spawning time in 2022 would be 3,769,326t. The advice also notes that “spawning-stock size is above $MSY B_{trigger}$, B_{pa}, and B_{lim}” (ICES 2022). Spawning stock size is therefore estimated to be substantially larger than both the target and limit reference points, and C1.2 is met.</p> | | | |

mac.27.nea_2022_17509_2022929010501



Mackerel in Subareas 1-8 and 14, and Division 9a. SSB over time relative to current reference points (ICES 2022)

References

ICES (2022). Mackerel (*Scomber scombrus*) in subareas 1-8 and 14 and division 9.a (the Northeast Atlantic and adjacent waters). In Report of the ICES Advisory Committee, 2022. ICES Advice 2022, mac.27.nea. <https://doi.org/10.17895/ices.advice.7789>

Links

| | |
|----------------------------|---------------|
| MarinTrust Standard clause | 1.3.2.2 |
| FAO CCRF | 7.5.3 |
| GSSI | D.3.04, D5.01 |

CATEGORY D SPECIES

Category D species are those which are not subject to a species-specific management regime. In the case of mixed trawl fisheries, Category D species may make up the majority of landings. The comparative lack of scientific information on the status of the population of the species means that a risk-assessment style approach must be taken.

| | | | |
|--------------------------|---|--------------|--------------|
| D1 | Species Name | n/a | |
| | Productivity Attribute | Value | Score |
| | Average age at maturity (years) | | |
| | Average maximum age (years) | | |
| | Fecundity (eggs/spawning) | | |
| | Average maximum size (cm) | | |
| | Average size at maturity (cm) | | |
| | Reproductive strategy | | |
| | Mean trophic level | | |
| | Average Productivity Score | | |
| | Susceptibility Attribute | Value | Score |
| | Availability (area overlap) | | |
| | Encounterability (the position of the stock/species within the water column relative to the fishing gear) | | |
| | Selectivity of gear type | | |
| | Post-capture mortality | | |
| | Average Susceptibility Score | | |
| | PSA Risk Rating (From Table D3) | | |
| | Compliance rating | | |
| | Further justification for susceptibility scoring (where relevant) <i>For susceptibility attributes, please provide a brief rationale for scoring of parameters where there may be uncertainty affecting your decision</i> | | |
| | References | | |
| Standard clauses 1.3.2.2 | | | |

Table D2 - Productivity / Susceptibility attributes and scores.

| Productivity attributes | High productivity (Low risk, score = 1) | Medium productivity (medium risk, score = 2) | Low productivity (high risk, score = 3) |
|--------------------------|---|--|---|
| Average age at maturity | <5 years | 5-15 years | >15 years |
| Average maximum age | <10 years | 10-25 years | >25 years |
| Fecundity | >20,000 eggs per year | 100-20,000 eggs per year | <100 eggs per year |
| Average maximum size | <100 cm | 100-300 cm | >300 cm |
| Average size at maturity | <40 cm | 40-200 cm | >200 cm |
| Reproductive strategy | Broadcast spawner | Demersal egg layer | Live bearer |
| Mean Trophic Level | <2.75 | 2.75-3.25 | >3.25 |

| Susceptibility attributes | Low susceptibility (Low risk, score = 1) | Medium susceptibility (medium risk, score = 2) | High susceptibility (high risk, score = 3) |
|---|--|---|---|
| Areal overlap (availability) Overlap of the fishing effort with the species range | <10% overlap | 10-30% overlap | >30% overlap |
| Encounterability The position of the stock/species within the water column relative to the fishing gear, and the position of the stock/species within the habitat relative to the position of the gear | Low overlap with fishing gear (low encounterability). | Medium overlap with fishing gear. | High overlap with fishing gear (high encounterability). Default score for target species |
| Selectivity of gear type Potential of the gear to retain species | a Individuals < size at maturity are rarely caught | a Individuals < size at maturity are regularly caught. | a Individuals < size at maturity are frequently caught |
| | b Individuals < size at maturity can escape or avoid gear. | b Individuals < half the size at maturity can escape or avoid gear. | b Individuals < half the size at maturity are retained by gear. |
| Post-capture mortality (PCM) The chance that, if captured, a species would be released and that it would be in a condition permitting subsequent survival | Evidence of majority released post-capture and survival. | Evidence of some released post-capture and survival. | Retained species or majority dead when released. |

| D3 | | Average Susceptibility Score | | |
|----------------------------|-------------|------------------------------|-------------|----------|
| | | 1 - 1.75 | 1.76 - 2.24 | 2.25 - 3 |
| Average Productivity Score | 1 - 1.75 | PASS | PASS | PASS |
| | 1.76 - 2.24 | PASS | PASS | TABLE D4 |
| | 2.25 - 3 | PASS | TABLE D4 | TABLE D4 |

| D4 Species Name | | | |
|---|---|----------------|-----------------|
| Impacts On Species Categorised as Vulnerable by D1-D3 - Minimum Requirements | | | |
| D4.1 | The potential impacts of the fishery on this species are considered during the management process, and reasonable measures are taken to minimise these impacts. | | |
| D4.2 | There is no substantial evidence that the fishery has a significant negative impact on the species. | | |
| | | | Outcome: |
| Evidence | | | |
| D4.1: The potential impacts of the fishery on this species are considered during the management process, and reasonable measures are taken to minimise these impacts. | | | |
| D4.2 There is no substantial evidence that the fishery has a significant negative impact on the species. | | | |
| References | | | |
| Links | | | |
| MarinTrust Standard clause | | 1.3.2.2, 4.1.4 | |
| FAO CCRF | | 7.5.1 | |
| GSSI | | D.5.01 | |