



## MarinTrust Standard V2

### By-product Fishery Assessment *Turbot (Scophthalmus maximus) in FAO 27 Northeast Atlantic ICES Division 3.a (Skagerrak and Kattegat)*

**MarinTrust Programme**

Unit C, Printworks

22 Amelia Street

London

SE17 3BZ

E: [standards@marin-trust.com](mailto:standards@marin-trust.com)

T: +44 2039 780 819

**Table 1 Application details and summary of the assessment outcome**

Fishery Under Assessment	Species:	Turbot ( <i>Scophthalmus maximus</i> )
	Geographical area:	FAO Area 27 Northeast Atlantic
	Country of origin of the product:	Flag country not supplied by client Fished by: Denmark, Netherlands and others (ICES 2021 Catch Data)
	Stock:	Turbot in ICES Division 3.a (Skagerrak and Kattegat)
Date	22 July 2022	
Report Code	FRA21	
Assessor	Matthew Jew	
Country of origin of the product - PASS	Flag country not supplied by client Fished by: Denmark, Netherlands and others (ICES 2021 Catch Data)	
Country of origin of the product - FAIL	NA	

Application details and summary of the assessment outcome			
Company Name(s): Bioceval			
Country: France			
Email address:		Applicant Code:	
Certification Body Details			
Name of Certification Body:		Global Trust Certification	
Assessor	Peer Reviewer	Assessment Days	Initial/Surveillance/ Re-approval
Matthew Jew	Léa Lebechnech	0.5	Re-approval
Assessment Period	Up to July 2022		

Scope Details	
Main Species	Turbot ( <i>Scophthalmus maximus</i> )
Stock	Turbot in ICES Division 3.a (Skagerrak and Kattegat)
Fishery Location	FAO Area 27 Northeast Atlantic Ocean
Management Authority (Country/ State)	European Union (Common Fisheries Policy), Ministry of Agriculture and Food Quality (Netherlands), The Ministry of Food, Agriculture and Fisheries (Denmark)
Gear Type(s)	2021 estimates: Otter trawl and seines (56.4%), Beam trawl (23.3%), other gears (20.3%)
Outcome of Assessment	
Peer Review Evaluation	Agree with the assessor's recommendation of approval
Recommendation	<b>APPROVED</b>

## Table 2. Assessment Determination

Assessment Determination
<p>If any species is categorised as Endangered or Critically Endangered on IUCN's Red List, or if it appears in the CITES appendices, it cannot be approved for use as Marin trust raw material. Turbot (<i>Scophthalmus maximus</i>) do not appear as Endangered or Critically Endangered on IUCN's Red List, nor do they appear in CITES appendices; therefore, <i>Scophthalmus maximus</i> is eligible for approval for use as Marin trust by-product raw material.</p> <p>There is a EU multiannual management plan (EU MAP) adopted for this stock. Reference points are defined for the Turbot stock, therefore it was assessed under Category C.</p> <p>Fishery removals are included in the stock assessment and it PASSES Clause C1.1. The stock is considered, in its most recent stock assessment, to have biomass above the limit reference point, it PASSES Clause C1.2.</p> <p>Therefore, Turbot in Subarea 3.a (Skagerrak and Kattegat) is <b>APPROVED</b> for the production of fishmeal and fish oil under the current MarinTrust v2.0 by-products.</p>
Fishery Assessment Peer Review Comments
<p>The internal peer reviewer agrees with the assessor's recommendation, who correctly classified the Turbot in Subarea 3.a (Skagerrak and Kattegat) under Category C, as reference points are defined for this stock.</p> <p>Turbot in ICES Subarea 4 (North Sea) passes Clauses C1.1 and C1.2 and is consequently <b>APPROVED</b>.</p>
Notes for On-site Auditor
<p>Determine which flag state(s) the plant is sourcing its Turbot from.</p>

## Species Categorisation

**NB:** If any species is categorised as Endangered or Critically Endangered on the IUCN Red List, or if it appears in CITES Appendix 1, it **cannot** be approved for use as a MarinTrust raw material.

### IUCN Red list Category

By-product material from a species listed by IUCN (the International Union for Conservation of Nature) under the Red List for the following categories shall immediately fail the assessment;

- EXTINCT (E) AND EXTINCT IN THE WILD (EW)
- CRITICALLY ENDANGERED (CR) facing an extremely high risk of extinction in the wild.
- ENDANGERED (EN) facing a very high risk of extinction in the wild.

By-product material may be used from the following categories provided that all clauses in the MarinTrust standard are passed.

- VULNERABLE (VU) facing a high risk of extinction in the wild.
- NEAR THREATENED (NT) does not qualify for above now, but is close or is likely to qualify for, a threatened category in the near future.
- LEAST CONCERN (LC) Widespread and abundant.
- DATA DEFICIENT (DD) and NOT EVALUATED (NE)

## Table 3 Species Categorisation Table

Common name	Latin name	Stock	Management	Category	IUCN Red List Category <sup>1</sup>	CITES Appendix 1 <sup>2</sup>
Turbot	<i>Scophthalmus maximus</i>	Turbot in ICES Division 3.a (Skagerrak and Kattegat)	European Union (Common Fisheries Policy), Ministry of Agriculture and Food Quality (Netherlands), The Ministry of Food, Agriculture and Fisheries (Denmark)	C	LC	No

<sup>1</sup> <https://www.iucnredlist.org/>

<sup>2</sup> <https://cites.org/eng/app/appendices.php>

# CATEGORY C SPECIES

In a by-product assessment, Category C species are those which are subject to a species-specific management regime and are usually targeted species in fisheries for human consumption.

Clause C1 should be completed for each Category C species. If there are no Category C species in the fishery under assessment, this section can be deleted. Where a species fails this Clause, it should be assessed as a Category D species instead.

<b>Species Name</b>		<b>Turbot (<i>Scophthalmus maximus</i>)</b>	
<b>C1</b>	<b>Category C Stock Status - Minimum Requirements</b>		
	<b>C1.1</b>	Fishery removals of the species in the fishery under assessment are included in the stock assessment process, OR are considered by scientific authorities to be negligible.	Yes
	<b>C1.2</b>	The species is considered, in its most recent stock assessment, to have a biomass above the limit reference point (or proxy), OR removals by the fishery under assessment are considered by scientific authorities to be negligible.	Yes
			<b>Clause outcome:</b> PASS
<p><b>C1.1 Fishery removals of the species in the fishery under assessment are included in the stock assessment process, OR are considered by scientific authorities to be negligible.</b></p> <p>This stock assessment is a SPECT assessment that uses commercial catches. Long-term catch trends are presented in Figure 1. Therefore, fishery removals of the stock, including from the fishery under assessment, are included in the stock assessment process. <b>The stock passes Clause C1.1.</b></p>			
<p style="text-align: center;"><b>Catches</b></p> <p style="text-align: right; font-size: small;">tur.27.3a_2022_17064_202262200820</p>			
<p>Figure 1. Long-term catches for Turbot in Division 3.a (Skagerrak and Kattegat). Year 2013 was when discard data began being recorded. Source: ICES 2022.</p>			
<p><b>C1.2 The species is considered, in its most recent stock assessment, to have a biomass above the limit reference point (or proxy), OR removals by the fishery under assessment are considered by scientific authorities to be negligible.</b></p> <p>The stock size is above <math>MSY_{B_{trigger}}</math> (Figure 2). Therefore, the stock is considered to have biomass above the limit reference point. <b>The stock passes Clause C1.2.</b></p>			

## Relative exploitable biomass

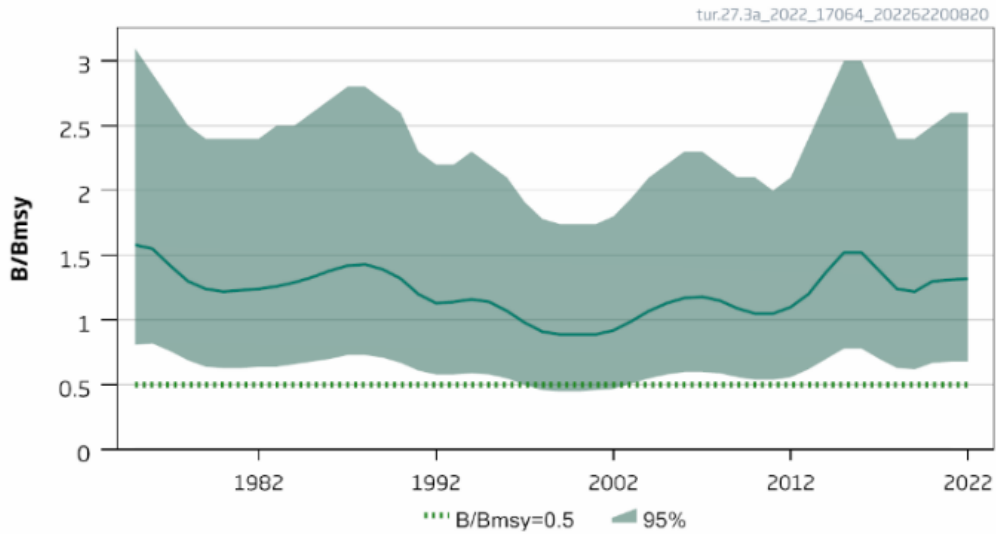


Figure 2. Turbot in Division 3.a Summary of the stock assessment.

### References

ICES. 2022. Turbot (*Scophthalmus maximus*) in Division 3.a (Skagerrak and Kattegat). In Report of the ICES Advisory Committee, 2022. ICES Advice 2022, tur.27.3a. <https://doi.org/10.17895/ices.advice.19453868>.

### Links

MarinTrust Standard clause	1.3.2.2
FAO CCRF	7.5.3
GSSI	D.3.04, D5.01