



MarinTrust Standard V2

By-product Fishery Assessment *Turbot (Scophthalmus maximus) in FAO 27 – Northeast Atlantic, ICES 3.a*

MarinTrust Programme

Unit C, Printworks

22 Amelia Street

London

SE17 3BZ

E: standards@marin-trust.com

T: +44 2039 780 819

Table 1 Application details and summary of the assessment outcome

Fishery Under Assessment	Species:	Turbot (<i>Scophthalmus maximus</i>)
	Geographical area:	FAO Area 27 northeast Atlantic
	Country of origin of the product:	France
	Stock:	Turbot (<i>Scophthalmus maximus</i>) in FAO Area 27 northeast Atlantic in ICES division 3.a (Skagerrak and Kattegat)
Date	28 July 2023	
Report Code	FRA21	
Assessor	Ana Elisa Almeida Ayres	
Country of origin of the product - PASS	France	
Country of origin of the product - FAIL	NA	

Application details and summary of the assessment outcome			
Company Name(s): Bioceval SAS - Concarneau			
Country: France			
Email address:		Applicant Code:	
Certification Body Details			
Name of Certification Body:		NSF	
Assessor	Peer Reviewer	Assessment Days	Initial/Surveillance/ Re-approval
Ana Elisa Almeida Ayres	Matthew Jew	0.5	Surveillance 1
Assessment Period	Up to July 2023		

Scope Details	
Main Species	Turbot (<i>Scophthalmus maximus</i>)
Stock	Turbot (<i>Scophthalmus maximus</i>) in FAO Area 27 northeast Atlantic in ICES division 3.a (Skagerrak and Kattegat)
Fishery Location	FAO Area 27 northeast Atlantic
Management Authority (Country/ State)	European Union (Common Fisheries Policy), France Direction des Pêches Maritimes et de l'Aquaculture
Gear Type(s)	2022 estimates: Otter trawl and seines (59,6%), Beam trawl (17.4%), other gears (23%)
Outcome of Assessment	
Peer Review Evaluation	Agree with assessor's recommendation
Recommendation	Approved

Table 2. Assessment Determination

Assessment Determination
<p>If any species is categorised as Endangered or Critically Endangered on Union for Conservation of Nature's Red List of Threatened Species - IUCN's Red List, or if it appears in the Convention on International Trade in Endangered Species of Wild Fauna and Flora - CITES appendices, it cannot be approved for use as Marin Trust raw material. Turbot (<i>Scophthalmus maximus</i>) is not categorised as Endangered or Critically Endangered on IUCN's Red List and does not appear in CITES appendices; therefore, <i>Scophthalmus maximus</i> is eligible for approval for use as Marin Trust by-product raw material.</p> <p>There is a EU multiannual management plan (EU MAP) adopted for this stock. Reference points are defined for the turbot stock, therefore, it was assessed under Category C.</p> <p>Fishery removals are included in the stock assessment and it PASSES Clause C1.1. The stock is considered, in its most recent stock assessment, to have biomass above the reference point, it PASSES Clause C1.2.</p> <p>Therefore, turbot (<i>Scophthalmus maximus</i>) in FAO Area 27 Northeast Atlantic in ICES Division 3.a (Skagerrak and Kattegat) is APPROVED to produce fishmeal and fish oil under the current MarinTrust v2.3 by-products standard.</p>
Fishery Assessment Peer Review Comments
<p>The assessor correctly classified turbot (<i>Scophthalmus maximus</i>) in ICES Division 3.a (Skagerrak and Kattegat) as Category C, the stock is subject to a specific management regime and reference points are defined by the Norwegian-Russian Fisheries Commission.</p> <p>Fishery removals are considered in the stock assessment process. The most recent stock assessment shows that the stock is above $MSY_{B_{trigger}}$. Therefore, because the stock has biomass above target reference point, it is considered to have biomass above the limit reference point.</p> <p>Turbot (<i>Scophthalmus maximus</i>) in ICES Division 3.a (Skagerrak and Kattegat) passes both clauses (C1.1 and C1.2) and therefore should be approved under the MarinTrust Standard v.2.</p>
Notes for On-site Auditor
N/A

Species Categorisation

NB: If any species is categorised as Endangered or Critically Endangered on the IUCN Red List, or if it appears in CITES Appendix 1, it **cannot** be approved for use as a MarinTrust raw material.

IUCN Red list Category

By-product material from a species listed by IUCN (the International Union for Conservation of Nature) under the Red List for the following categories shall immediately fail the assessment;

- EXTINCT (E) AND EXTINCT IN THE WILD (EW)
- CRITICALLY ENDANGERED (CR) facing an extremely high risk of extinction in the wild.
- ENDANGERED (EN) facing a very high risk of extinction in the wild.

By-product material may be used from the following categories provided that all clauses in the MarinTrust standard are passed.

- VULNERABLE (VU) facing a high risk of extinction in the wild.
- NEAR THREATENED (NT) does not qualify for above now, but is close or is likely to qualify for, a threatened category in the near future.
- LEAST CONCERN (LC) Widespread and abundant.
- DATA DEFICIENT (DD) and NOT EVALUATED (NE)

Table 3 Species Categorisation Table

Common name	Latin name	Stock	Management	Category	IUCN Red List Category ¹	CITES Appendix 1 ²
Turbot	<i>Scophthalmus maximus</i>	Turbot (<i>Scophthalmus maximus</i>) in FAO Area 27 Northeast Atlantic in ICES division 3.a (Skagerrak and Kattegat)	European Union (Common Fisheries Policy), France Direction des Pêches Maritimes et de l'Aquaculture	C	LC	No

¹ <https://www.iucnredlist.org/>

² <https://cites.org/eng/app/appendices.php>

CATEGORY C SPECIES

In a by-product assessment, Category C species are those which are subject to a species-specific management regime and are usually targeted species in fisheries for human consumption.

Clause C1 should be completed for each Category C species. If there are no Category C species in the fishery under assessment, this section can be deleted. Where a species fails this Clause, it should be assessed as a Category D species instead.

Species Name		Turbot (<i>Scophthalmus maximus</i>)	
C1	Category C Stock Status - Minimum Requirements		
	C1.1	Fishery removals of the species in the fishery under assessment are included in the stock assessment process, OR are considered by scientific authorities to be negligible.	Yes
	C1.2	The species is considered, in its most recent stock assessment, to have a biomass above the limit reference point (or proxy), OR removals by the fishery under assessment are considered by scientific authorities to be negligible.	Yes

Clause outcome: Pass

C1.1 Fishery removals of the species in the fishery under assessment are included in the stock assessment process, OR are considered by scientific authorities to be negligible.

This stock assessment is a Supportive and Palliative Care Indicators Tool - SPICT assessment that uses commercial catches. Long-term catch trends are presented in Figure 1.

Fishing pressure on the stock is below the fishing mortality rate consistent with achieving Maximum Sustainable Yield - F_{MSY} (ICES, 2023). ICES advises that when the MSY approach is applied, catches in 2024 should be no more than 261 tonnes. If discard rates do not change from the average of the last three years (2020–2022), this implies landings of no more than 234 tonnes.

Therefore, fishery removals of the stock, including from the fishery under assessment, are included in the stock assessment process. **The stock passes Clause C1.1.**

Catches

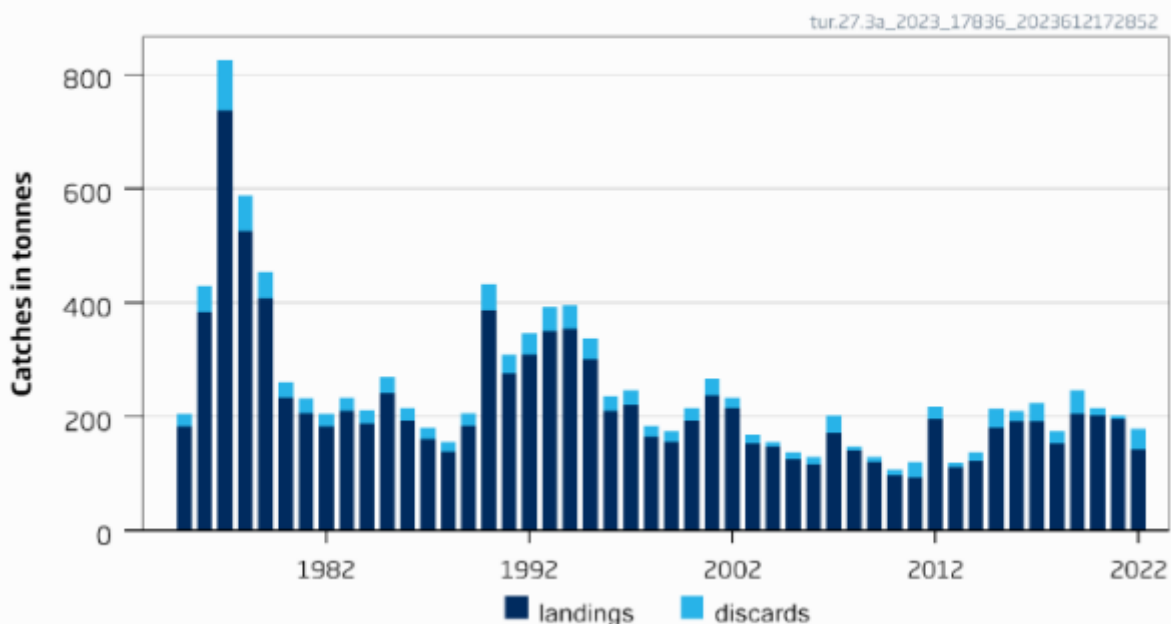


Figure 1. Long-term catches for Turbot in Division 3.a (Skagerrak and Kattegat). Year 2013 was when discard data began being recorded. Source (ICES, 2023).

C1.2 The species is considered, in its most recent stock assessment, to have a biomass above the limit reference point (or proxy), OR removals by the fishery under assessment are considered by scientific authorities to be negligible.

Stock size is above $MSY B_{trigger}$, whereas $MSY B_{trigger}$ is the biomass reference point that triggers a cautious response within the ICES MSY framework and its basis is reported below.

Thus, the species is considered, in its most recent stock assessment, to have a biomass above the reference point. **The stock passes Clause C1.2.**

Table 4 Turbot in Division 3.a. Reference points, values, and their technical basis.

Framework	Reference point	Value	Technical basis	Source
MSY approach	$MSY B_{trigger}$	$\frac{B}{B_{MSY}} = 0.5 *$	Relative value from the SPiCT model. B_{MSY} is estimated directly from the SPiCT assessment model and changes when the assessment is updated.	ICES (2020a)
	F_{MSY}	$\frac{F}{F_{MSY}} = 1 *$	Relative value from the SPiCT model. F_{MSY} is estimated directly from the SPiCT assessment model and changes when the assessment is updated.	ICES (2020a)
Precautionary approach	B_{lim}	Not defined		
	B_{pa}	Not defined		
	F_{lim}	Not defined		
	F_{pa}	Not defined		
Management plan	SSB_{mgt}	Not defined		
	F_{mgt}	Not defined		

* No reference points are defined for this stock in terms of absolute values. The SPiCT-estimated values of the ratios F/F_{MSY} and B/B_{MSY} are used to estimate stock status relative to the MSY reference points.

Figure 2. Source: ICES (2023).

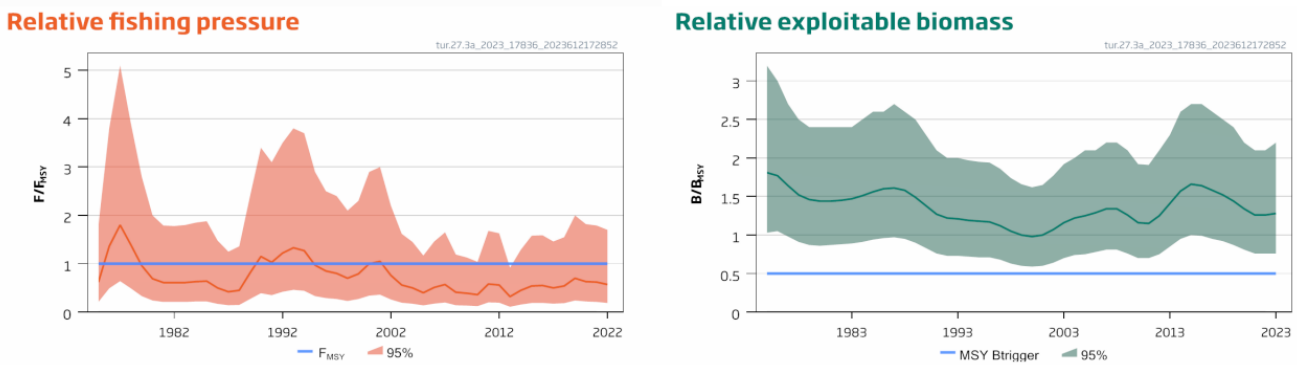


Figure 3. Summary of the stock assessment. Discards are reconstructed prior to 2002 (ICES, 2023).

References

ICES. 2023. Turbot (*Scophthalmus maximus*) in Division 3.a (Skagerrak and Kattegat). In Report of the ICES Advisory Committee, 2023. ICES Advice 2023, tur.27.3a. <https://doi.org/10.17895/ices.advice.21864318>

Links

MarinTrust Standard clause	1.3.2.2
FAO CCRF	7.5.3
GSSI	D.3.04, D5.01