



MarinTrust Standard V2

By-product Fishery Assessment *Saithe (ICES Division 5.b, Faroes grounds)*

MarinTrust Programme

Unit C, Printworks

22 Amelia Street

London

SE17 3BZ

E: standards@marin-trust.com

T: +44 2039 780 819

Table 1 Application details and summary of the assessment outcome

Fishery Under Assessment	Species:	Saithe (<i>Pollachius virens</i>)
	Geographical area:	FAO Area 27 Northeast Atlantic
	Country of origin of the product:	France Flag country not supplied by client Fished by: Faroes, UK, and Norway (ICES 2021 Catch Data)
	Stock:	Saithe in ICES Division 5.b (Faroes grounds)
Date	03 August 2023	
Report Code	FRA24	
Assessor	Ana Elisa Almeida Ayres	
Country of origin of the product - PASS	France Flag country not supplied by client Fished by: Faroes, UK, and Norway (ICES 2021 Catch Data)	
Country of origin of the product - FAIL	NA	

Application details and summary of the assessment outcome			
Company Name(s): Copalis			
Country:			
Email address:		Applicant Code:	
Certification Body Details			
Name of Certification Body:		NSF	
Assessor	Peer Reviewer	Assessment Days	Initial/Surveillance/ Re-approval
Ana Elisa Almeida Ayres	Léa Lebechnech	0.5	Surveillance 1
Assessment Period	Up to August 2023		

Scope Details	
Main Species	Saithe (<i>Pollachius virens</i>)
Stock	Saithe in ICES Division 5.b (Faroes grounds)
Fishery Location	FAO 27 Northeast Atlantic
Management Authority (Country/ State)	Ministry of Fisheries (Faroes), Department for Environment, Food, and Rural Affairs (UK), Norwegian Directorate of Fisheries
Gear Type(s)	2022 Estimates: Pair trawls (93%), single trawler (2%), jiggers and others (5%)
Outcome of Assessment	
Peer Review Evaluation	Agree with the assessor's determination
Recommendation	APPROVED

Table 2. Assessment Determination

Assessment Determination
<p>If any species is categorised as Endangered or Critically Endangered on Union for Conservation of Nature's Red List of Threatened Species - IUCN's Red List, or if it appears in the Convention on International Trade in Endangered Species of Wild Fauna and Flora - CITES appendices, it cannot be approved for use as MarinTrust raw material. Saithe (<i>Pollachius virens</i>) is not categorised as Endangered or Critically Endangered on IUCN's Red List and does not appear in CITES appendices; therefore, saithe (<i>Pollachius virens</i>) is eligible for approval for use as Marin Trust by-product raw material.</p> <p>A management plan was implemented in 2021, but ICES has not been requested to evaluate it. However, the stock is subject to a specific management regime and reference points are defined, therefore it was assessed under Category C.</p> <p>Fishery removals are included in the stock assessment and it PASSES Clause C1.1. The stock is considered, in its most recent stock assessment (November 2022), to have biomass above the limit reference point, it PASSES Clause C1.2.</p> <p>Therefore, saithe (<i>Pollachius virens</i>) in ICES Division 5.b (Faroes grounds) is APPROVED for the production of fishmeal and fish oil under the current MarinTrust v2.3 by-products standard.</p>
Fishery Assessment Peer Review Comments
<p>The assessor correctly classified saithe in ICES Division 5.b (Faroes grounds) under category C, as the stock is managed and reference points are defined to assess the stock status against.</p> <p>Fishery removals from the stock are considered in the stock assessment process, and the most recent stock assessment shows that the stock is considered to have a biomass well above the limit reference point: the fishery passes both clauses C1.1 and C1.2.</p> <p>Therefore, saithe in ICES Division 5.b (Faroes grounds) is APPROVED for the production of fishmeal and fish oil under the current MarinTrust V2.0 by-products standards.</p>
Notes for On-site Auditor

Species Categorisation

NB: If any species is categorised as Endangered or Critically Endangered on the IUCN Red List, or if it appears in CITES Appendix 1, it **cannot** be approved for use as a MarinTrust raw material.

IUCN Red list Category

By-product material from a species listed by IUCN (the International Union for Conservation of Nature) under the Red List for the following categories shall immediately fail the assessment;

- EXTINCT (E) AND EXTINCT IN THE WILD (EW)
- CRITICALLY ENDANGERED (CR) facing an extremely high risk of extinction in the wild.
- ENDANGERED (EN) facing a very high risk of extinction in the wild.

By-product material may be used from the following categories provided that all clauses in the MarinTrust standard are passed.

- VULNERABLE (VU) facing a high risk of extinction in the wild.
- NEAR THREATENED (NT) does not qualify for above now, but is close or is likely to qualify for, a threatened category in the near future.
- LEAST CONCERN (LC) Widespread and abundant.
- DATA DEFICIENT (DD) and NOT EVALUATED (NE)

Table 3 Species Categorisation Table

Common name	Latin name	Stock	Management	Category	IUCN Red List Category ¹	CITES Appendix 1 ²
Saithe	<i>Pollachius virens</i>	Saithe in FAO 27 Division 5.b (Faroe Grounds)	Ministry of Fisheries (Faroes), Department for Environment, Food, and Rural Affairs (UK), Norwegian Directorate of Fisheries	C	LC	No

¹ <https://www.iucnredlist.org/>

² <https://cites.org/eng/app/appendices.php>

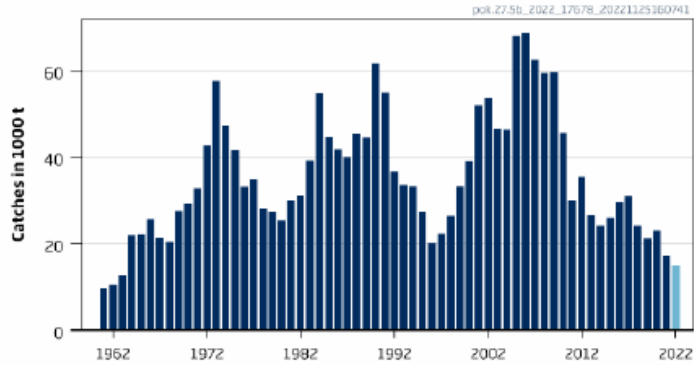
CATEGORY C SPECIES

In a by-product assessment, Category C species are those which are subject to a species-specific management regime and are usually targeted species in fisheries for human consumption.

Clause C1 should be completed for each Category C species. If there are no Category C species in the fishery under assessment, this section can be deleted. Where a species fails this Clause, it should be assessed as a Category D species instead.

Species Name		Saithe (<i>Pollachius virens</i>)	
C1	Category C Stock Status - Minimum Requirements		
	C1.1	Fishery removals of the species in the fishery under assessment are included in the stock assessment process, OR are considered by scientific authorities to be negligible.	Yes
	C1.2	The species is considered, in its most recent stock assessment, to have a biomass above the limit reference point (or proxy), OR removals by the fishery under assessment are considered by scientific authorities to be negligible.	Yes
			Clause outcome: Pass
<p>C1.1 Fishery removals of the species in the fishery under assessment are included in the stock assessment process, OR are considered by scientific authorities to be negligible.</p> <p>This stock assessment is a state-space model (SAM), using catches (including commercial landings) in the model and in the forecast. Discarding is considered negligible. Long-term catch and fishing mortality at ages 3-15 [$F_{(ages\ 4-8)}$] data are presented in Figure 1. The most updated report of International Council for the Exploration of the Sea - ICES (November 2022) indicated that fishing pressure on the stock is below the fishing mortality consistent with achieving maximum sustainable yield (F_{MSY}) [ICES, 2022]. Catch estimate for 2022 was based on catch statistics to the end of September extrapolated to the entire year, in tonnes. According to ICES (2023), a management plan was implemented in 2021, but ICES has not been requested to evaluate it: "ICES advises that when the MSY approach is applied, catches in 2023 should be no more than 17 843 tonnes. ICES is not in a position to advise on the corresponding level of fishing effort".</p>			

Catches



F

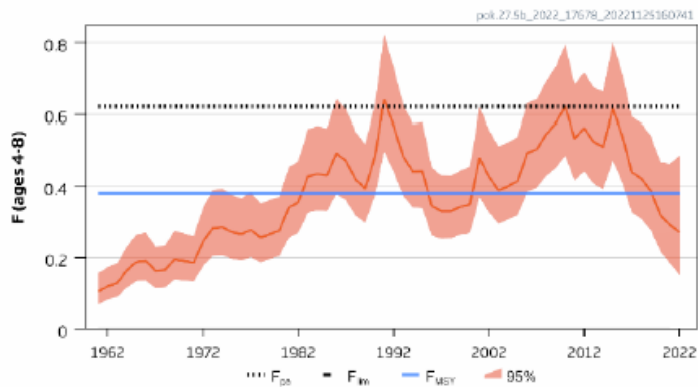


Figure 1. Long-term catches for Saithe (*Pollachius virens*) in Division 5.b (Faroes grounds). The assessment produces an estimate of F in 2022. Catches in 2022 are assumed. Source: ICES 2022.

Fishery removals of the species in the fishery under assessment are included in the stock assessment process, C1.1 is met.

C1.2 The species is considered, in its most recent stock assessment, to have a biomass above the limit reference point (or proxy), OR removals by the fishery under assessment are considered by scientific authorities to be negligible.

According to ICES (2022), spawning-stock size is above: the biomass reference point that triggers a cautious response within the ICES MSY framework (MSY $B_{trigger}$), the precautionary reference point for spawning stock biomass (B_{pa}) and the limit reference point for spawning stock biomass (B_{lim}).

SSB

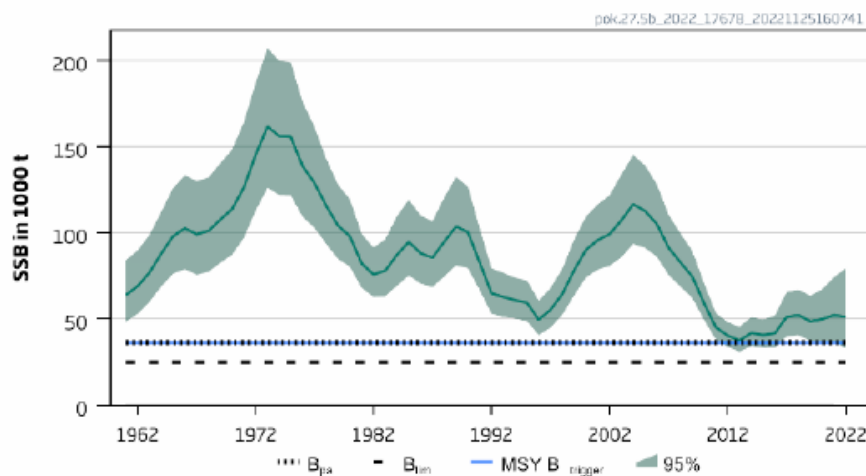


Figure 2. Long-term spawning stock biomass (SSB) trends for Saithe (*Pollachius virens*) in Division 5.b (Faroese grounds). Source: ICES 2022.

The species is considered, in its most recent stock assessment, to have a biomass above the limit reference point (or proxy), C.1.2 is met.

References

ICES. 2022. Saithe (*Pollachius virens*) in Division 5.b (Faroese grounds). In Report of the ICES Advisory Committee, 2022. ICES Advice 2022, pok.27.5b, <https://doi.org/10.17895/ices.advice.19772458>

Links

MarinTrust Standard clause	1.3.2.2
FAO CCRF	7.5.3
GSSI	D.3.04, D5.01