



MarinTrust Standard V2

By-product Fishery Assessment *Saithe (Pollachius virens) in FAO 27* *Subareas 1 and 2*

MarinTrust Programme

Unit C, Printworks

22 Amelia Street

London

SE17 3BZ

E: standards@marin-trust.com

T: +44 2039 780 819

Table 1 Application details and summary of the assessment outcome

Fishery Under Assessment	Species:	Saithe (<i>Pollachius virens</i>)
	Geographical area:	FAO 27 Northeast Atlantic
	Country of origin of the product:	France Flag country: UK, Iceland, France, Norway
	Stock:	Saithe in FAO 27 Subareas 1 & 2 (Northeast Arctic)
Date	8 August 2023	
Report Code	FRA25	
Assessor	Matthew Jew	
Country of origin of the product - PASS	France Flag country: UK, Iceland, France, Norway	
Country of origin of the product - FAIL	NA	

Application details and summary of the assessment outcome			
Company Name(s): Copalis			
Country: France			
Email address:		Applicant Code:	
Certification Body Details			
Name of Certification Body:		Global Trust Certification	
Assessor	Peer Reviewer	Assessment Days	Initial/Surveillance/ Re-approval
Matthew Jew	Ivan Mateo	0.5	Surveillance 2
Assessment Period	Up to August 2023		

Scope Details	
Main Species	Saithe (<i>Pollachius virens</i>)
Stock	Saithe in FAO 27 Subareas 1 & 2 (Northeast Arctic)
Fishery Location	FAO 27 Northeast Atlantic
Management Authority (Country/ State)	Norwegian Ministry of Fisheries and Coastal Affairs and EU CFP
Gear Type(s)	2022 Estimates: Gillnets (15.3%), purse seine (20.3%), bottom trawl (43%), other (21.4%)
Outcome of Assessment	
Peer Review Evaluation	Agree with assessor's assessment
Recommendation	APPROVED

Table 2. Assessment Determination

Assessment Determination
<p>If any species is categorised as Endangered or Critically Endangered on IUCN’s Red List, or if it appears in the CITES appendices, it cannot be approved for use as Marin trust raw material. Saithe (<i>Pollachius virens</i>) does not appear as Endangered or Critically Endangered on IUCN’s Red List, and does not appear in CITES appendices; therefore, <i>Pollachius virens</i> is eligible for approval for use as Marin trust by-product raw material.</p> <p>There is a Norwegian management plan for this stock and the harvest control rules (HCR) were revised and 2103 and was communicated to ICES by the Norwegian Ministry of Fisheries and Coastal Affairs. The HCR contains methodology for establishing TAC based on recent harvest and biomass levels. As there is a management regime in place and reference points are defined, this stock is assessed under category C.</p> <p>Fishery removals are included in the stock assessment and it PASSES Clause C1.1. The stock is considered, in its most recent stock assessment, to have biomass above the limit reference point, it PASSES Clause C1.2.</p> <p>Therefore, saithe in ICES subareas 1 and 2 is APPROVED for the production of fishmeal and fish oil under the current MarinTrust v2.3 by-products.</p>
Fishery Assessment Peer Review Comments
<p>The assessor correctly classified saithe in ICES subareas 1 and 2 in category C, the stock is managed, and reference points are defined to assess the stock status against. Fishery removals from the stock are considered in the stock assessment process. The most recent stock assessment shows that the stock is considered to have a biomass well above the limit reference point. Therefore, saithe in ICES subareas 1 and 2 passes both C1.1 and C1.2 and therefore saithe in ICES subareas 1 and 2 is approved</p>
Notes for On-site Auditor
<p>Determine which flag state(s) the species is being sources from.</p>

Species Categorisation

NB: If any species is categorised as Endangered or Critically Endangered on the IUCN Red List, or if it appears in CITES Appendix 1, it **cannot** be approved for use as a MarinTrust raw material.

IUCN Red list Category

By-product material from a species listed by IUCN (the International Union for Conservation of Nature) under the Red List for the following categories shall immediately fail the assessment;

- EXTINCT (E) AND EXTINCT IN THE WILD (EW)
- CRITICALLY ENDANGERED (CR) facing an extremely high risk of extinction in the wild.
- ENDANGERED (EN) facing a very high risk of extinction in the wild.

By-product material may be used from the following categories provided that all clauses in the MarinTrust standard are passed.

- VULNERABLE (VU) facing a high risk of extinction in the wild.
- NEAR THREATENED (NT) does not qualify for above now, but is close or is likely to qualify for, a threatened category in the near future.
- LEAST CONCERN (LC) Widespread and abundant.
- DATA DEFICIENT (DD) and NOT EVALUATED (NE)

Table 3 Species Categorisation Table

Common name	Latin name	Stock	Management	Category	IUCN Red List Category ¹	CITES Appendix 1 ²
Saithe	<i>Pollachius virens</i>	Saithe in subareas 1 and 2	Norwegian Ministry of Fisheries and Coastal Affairs and EU Common Fisheries Policy	C	LC	No

¹ <https://www.iucnredlist.org/>

² <https://cites.org/eng/app/appendices.php>

CATEGORY C SPECIES

In a by-product assessment, Category C species are those which are subject to a species-specific management regime and are usually targeted species in fisheries for human consumption.

Clause C1 should be completed for each Category C species. If there are no Category C species in the fishery under assessment, this section can be deleted. Where a species fails this Clause, it should be assessed as a Category D species instead.

Species Name		Saithe (<i>Pollachius virens</i>)	
C1	Category C Stock Status - Minimum Requirements		
	C1.1	Fishery removals of the species in the fishery under assessment are included in the stock assessment process, OR are considered by scientific authorities to be negligible.	Yes
	C1.2	The species is considered, in its most recent stock assessment, to have a biomass above the limit reference point (or proxy), OR removals by the fishery under assessment are considered by scientific authorities to be negligible.	Yes

Clause outcome: PASS

C1.1 Fishery removals of the species in the fishery under assessment are included in the stock assessment process, OR are considered by scientific authorities to be negligible.

ICES advises that when the Norwegian management plan is applied, catches in 2024 should be no more than 223 123 tonnes.

The stock is assessed using an age-based analytical assessment (SAM) that uses landing in the model and in the forecast. Input data for this model are as follows: Commercial catches (international landings, ages and length frequencies from Norwegian, German, and Russian catch sampling*); one survey index from the Norwegian coastal survey Q4 (A6335 / NOcoast-Aco/BTr-Q4, split into 1994-2001, 2002-2022) recalculated using StoX from 2004 onwards; three-year running average maturity based on spawning zones from otoliths from commercial catches and surveys for 1985–2006, constant (2005–2007 average) for later years. Discarding is considered negligible and bycatch is included.

Catches

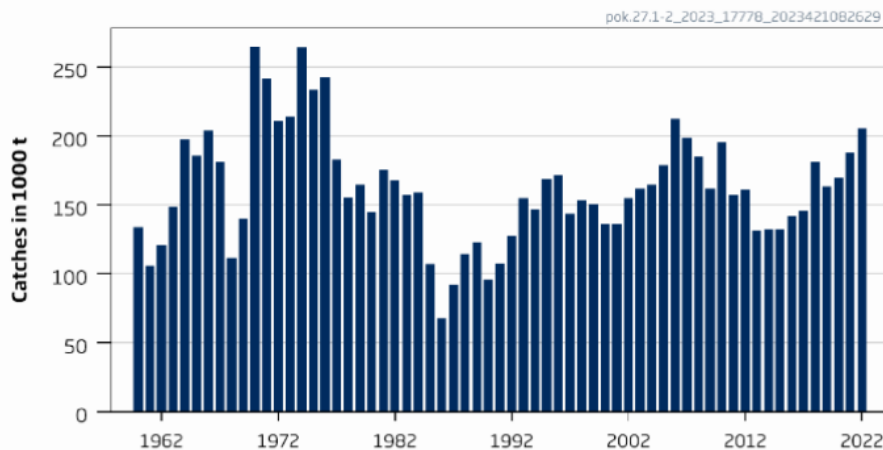


Figure 1. Long-term catches for saithe in ICES subareas 1 and 2 from 1960 to 2022.

Source: ICES 2023.

Therefore, fishery removals of the species in the fishery under assessment are included in the stock assessment process and therefore the stock PASSES clause C1.1

C1.2 The species is considered, in its most recent stock assessment, to have a biomass above the limit reference point (or proxy), OR removals by the fishery under assessment are considered by scientific authorities to be negligible. This stock does not have reference points that align with the MSY approach, but reference points for the precautionary approach do exist.

MSY approach		Precautionary approach	
MSY $B_{trigger}$	Not defined	B_{lim}	136,000 t
F_{MSY}	Not defined	B_{pa}	220,000 t
		F_{lim}	0.58
		F_{pa}	0.35

Fishing pressure on the stock is below F_{MP} , and spawning-stock size is above MSY $B_{trigger}$, B_{pa} , and B_{lim} .

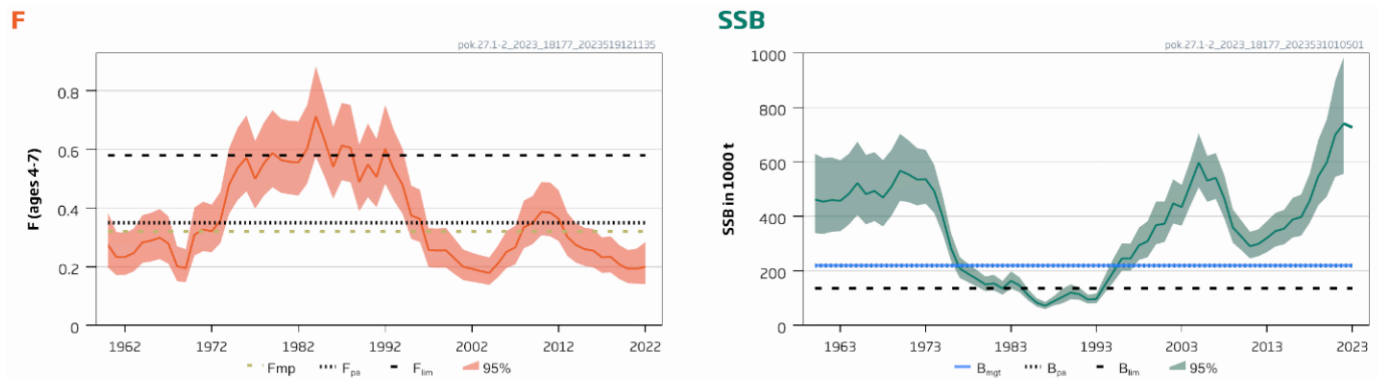


Figure 2. Saithe in ICES subareas 1 and 2 summary of the stock assessment. The left panel shows the historical fishing pressure from 1960 to 2022 and the right panel show historical biomass over the same time period. Source: ICES 2023.

Therefore, the species is considered, in its most recent stock assessment, to have a biomass above the limit reference point and it PASSES clause C1.2.

References

ICES. 2023. Saithe (*Pollachius virens*) in subareas 1 and 2 (Northeast Arctic). In Report of the ICES Advisory Committee, 2023. ICES Advice 2023, pok.27.1-2, <https://doi.org/10.17895/ices.advice.21828384>

Links

MarinTrust Standard clause	1.3.2.2
FAO CCRF	7.5.3
GSSI	D.3.04, D5.01