



MarinTrust Standard V2

By-product Fishery Assessment *Herring, Faroe Islands, EU, Iceland, Greenland, Norway*

MarinTrust Programme

Unit C, Printworks

22 Amelia Street

London

SE17 3BZ

E: standards@marin-trust.com

T: +44 2039 780 819

Table 1 Application details and summary of the assessment outcome

Fishery Under Assessment	Species:	Herring (<i>Clupea harengus</i>)
	Geographical area:	FAO 27 Northeast Atlantic
	Country of origin of the product:	Faroe Islands, EU, Iceland, Greenland, Norway
	Stock:	ICES subareas 1, 2, and 5, and in divisions 4.a and 14.a, Norwegian spring-spawning herring (the Northeast Atlantic and the Arctic Ocean)
Date	June 2022	
Report Code	FRO02	
Assessor	Sam Peacock	
Country of origin of the product - PASS	Faroe Islands, EU, Iceland, Greenland, Norway	
Country of origin of the product - FAIL		

Application details and summary of the assessment outcome			
Company Name(s): Havsbrún			
Country: Faroe Islands			
Email address: havsbrun@havsbrun.fo		Applicant Code:	
Certification Body Details			
Name of Certification Body:		LRQA	
Assessor	Peer Reviewer	Assessment Days	Initial/Surveillance/Re-approval
Sam Peacock	Kate Morris	0.3	Surveillance
Assessment Period	June 2022		

Scope Details	
Main Species	Herring (<i>Clupea harengus</i>)
Stock	Norwegian spring-spawning herring
Fishery Location	ICES subareas 1, 2, and 5, and in divisions 4.a and 14.a
Management Authority (Country/ State)	European Commission & national authorities of Faroes Islands, Greenland, Norway, Iceland
Gear Type(s)	Purse seine, pelagic trawl
Outcome of Assessment	
Overall Outcome	Approve
Clauses Failed	None
Peer Review Evaluation	Approve
Recommendation	Approve

Table 2. Assessment Determination

Assessment Determination
<p>Herring is categorised by the IUCN as a species of Least Concern, and it does not appear in the CITES appendices. The Norwegian spring-spawning herring stock is managed according to reference points and a management strategy, and was therefore assessed under Category C.</p> <p>The most recent stock assessment was conducted in 2021, using commercial catch-at-age and survey data. The assessment concluded that the stock biomass remains above the limit and target reference points. Catch advice provided by ICES has not been followed in recent years due to unilateral quota-setting; however a management strategy is in place and the stock continues to meet the MT requirements.</p> <p>As the MT requirements continue to be met, the byproduct should remain approved for use as a raw material.</p>
Fishery Assessment Peer Review Comments
<p>The by-product fishery under assessment here is the Norwegian spring-spawning herring (<i>Clupea harengus</i>) fishery, targeted by EU, Faroes Islands, Greenland, Norway, and Icelandic vessels in FAO 27, ICES subareas 1, 2, and 5, and in divisions 4.a and 14.a. Herring is managed laterally across the target fleets countries and a defined management plan is in place. Herring is correctly classified by the auditor as category C species and the C1 scoring table has been completed by the auditor with sufficient evidence to support their final determination. The fishery under assessment passes C1 scoring.</p> <p>The peer review supports the auditor’s recommendation to approve this fishery under the Marin Trust v2.0 by-product standard for the production of fishmeal and fish oil.</p>
Notes for On-site Auditor
<p>There is nothing to highlight to the onsite auditor at this stage.</p>

Species Categorisation

NB: If any species is categorised as Endangered or Critically Endangered on the IUCN Red List, or if it appears in CITES Appendix 1, it **cannot** be approved for use as a MarinTrust raw material.

IUCN Red list Category

By-product material from a species listed by IUCN (the International Union for Conservation of Nature) under the Red List for the following categories shall immediately fail the assessment;

- EXTINCT (E) AND EXTINCT IN THE WILD (EW)
- CRITICALLY ENDANGERED (CR) facing an extremely high risk of extinction in the wild.
- ENDANGERED (EN) facing a very high risk of extinction in the wild.

By-product material may be used from the following categories provided that all clauses in the MarinTrust standard are passed.

- VULNERABLE (VU) facing a high risk of extinction in the wild.
- NEAR THREATENED (NT) does not qualify for above now, but is close or is likely to qualify for, a threatened category in the near future.
- LEAST CONCERN (LC) Widespread and abundant.
- DATA DEFICIENT (DD) and NOT EVALUATED (NE)

Table 3 Species Categorisation Table

Common name	Latin name	Stock	Management	Category	IUCN Red List Category ¹	CITES Appendix 1 ²
Herring	<i>Clupea harengus</i>	Norwegian spring-spawning herring	Yes	C	Least Concern ³	No

¹ <https://www.iucnredlist.org/>

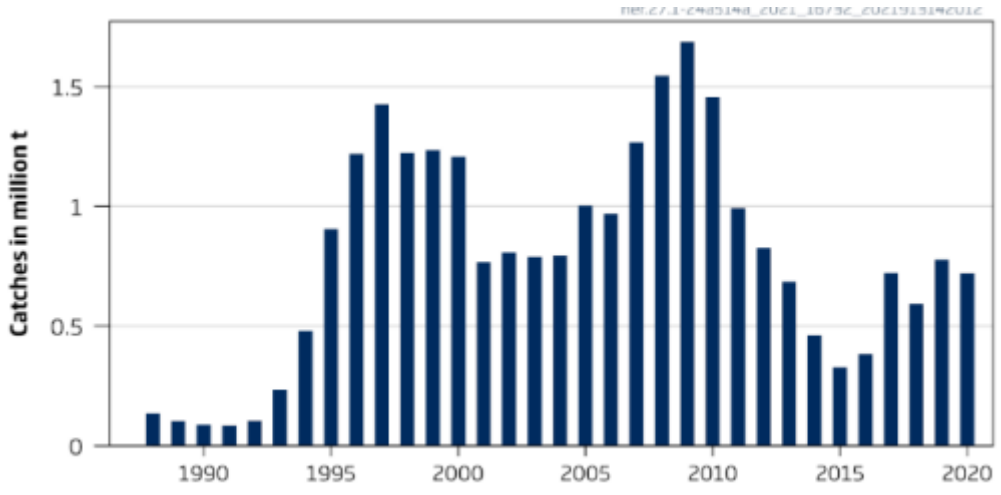
² <https://cites.org/eng/app/appendices.php>

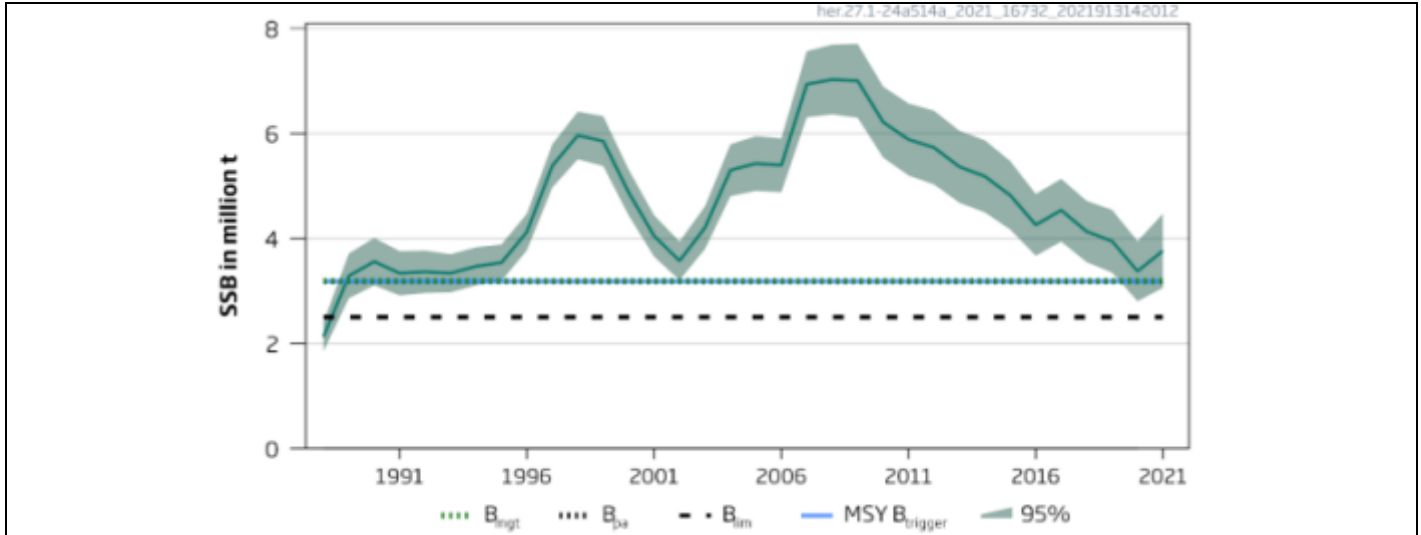
³ <https://www.iucnredlist.org/species/155123/4717767>

CATEGORY C SPECIES

In a by-product assessment, Category C species are those which are subject to a species-specific management regime and are usually targeted species in fisheries for human consumption.

Clause C1 should be completed for each Category C species. If there are no Category C species in the fishery under assessment, this section can be deleted. Where a species fails this Clause, it should be assessed as a Category D species instead.

Species Name		Herring (<i>Clupea harengus</i>)	
C1	Category C Stock Status - Minimum Requirements		
	C1.1	Fishery removals of the species in the fishery under assessment are included in the stock assessment process, OR are considered by scientific authorities to be negligible.	PASS
	C1.2	The species is considered, in its most recent stock assessment, to have a biomass above the limit reference point (or proxy), OR removals by the fishery under assessment are considered by scientific authorities to be negligible.	PASS
			Clause outcome: PASS
<p>C1.1 Fishery removals of the species in the fishery under assessment are included in the stock assessment process, OR are considered by scientific authorities to be negligible.</p> <p>The most recent stock assessment was conducted in 2021 and used commercial catch-at-age and survey data to conduct a statistical assessment model. Commercial landings data are recorded and reported and made available by ICES in the Working Group on Widely Distributed Stocks (WGWIDE) reports. Total landings in 2020 were estimated to be 720,937t (ICES 2021). Discarding is considered to be negligible.</p>  <p style="text-align: center;">Norwegian spring-spawning herring, total international catches, 1988 – 2020 (ICES 2021).</p>			
<p>Fishery removals are incorporated into the stock assessment and therefore C1.1 is met.</p>			
<p>C1.2 The species is considered, in its most recent stock assessment, to have a biomass above the limit reference point (or proxy), OR removals by the fishery under assessment are considered by scientific authorities to be negligible.</p> <p>The most recent stock assessment, conducted in 2021, concluded that the biomass of the Norwegian spring-spawning herring stock is above MSY $B_{trigger}$, B_{pa}, and B_{lim}. Spawning stock biomass in 2022 was projected to be around 3,919,597t, against a target reference point ($B_{trigger}$) of 3,184,000t and a limit reference point (B_{lim}) of 2,500,000t (ICES 2021).</p>			



Norwegian spring-spawning herring, estimated Spawning Stock Biomass (SSB), 1988 – 2020 (ICES 2021).

Catch recommendations made annually by ICES are based on the long-term management strategy agreed between the EU, Faroe Islands, Iceland, Norway and Russian Federation. ICES has evaluated the strategy and found it to be precautionary. In recent years the sum of the TACs applied by states fishing the stock has exceeded the advice due to unilateral quota-setting, which as led to total catches in excess of the level recommended.

The stock biomass is currently estimated to be above the limit reference point and therefore C1.2 is met.

References

ICES (2021). Herring (*Clupea harengus*) in subareas 1, 2, 5 and divisions 4.a and 14.a, Norwegian spring-spawning herring (the Northeast Atlantic and Arctic Ocean). In Report of the ICES Advisory Committee, 2021. ICES Advice 2021, her.27.1-24a514a. <https://doi.org/10.17895/ices.advice.7765>

Links

MarinTrust Standard clause	1.3.2.2
FAO CCRF	7.5.3
GSSI	D.3.04, D5.01