



MarinTrust Standard V2

By-product Fishery Assessment *Whiting in ICES Subarea 4 and Division 7d*

MarinTrust Programme

Unit C, Printworks

22 Amelia Street

London

SE17 3BZ

E: standards@marin-trust.com

T: +44 2039 780 819

Table 1 Application details and summary of the assessment outcome

Fishery Under Assessment	Species:	Whiting (<i>Merlangius merlangus</i>)
	Geographical area:	ICES Subarea 4 and Division 7d (North Sea and eastern English Channel)
	Country of origin of the product:	UK & Ireland
	Stock:	ICES Subarea 4 and Division 7d
Date	August 2022	
Report Code	GBR20	
Assessor	Sam Peacock	
Country of origin of the product - PASS	UK & Ireland	
Country of origin of the product - FAIL	None	

Application details and summary of the assessment outcome			
Company Name(s): Pelagia			
Country:			
Email address: geraldine.fox@pelagia.com		Applicant Code:	
Certification Body Details			
Name of Certification Body:		LRQA	
Assessor	Peer Reviewer	Assessment Days	Initial/Surveillance/ Re-approval
Sam Peacock	Jose Peiro Crespo	0.25	Surveillance 2
Assessment Period	August 2022		

Scope Details	
Main Species	Whiting (<i>Merlangius merlangus</i>)
Stock	ICES Subarea 4 and Division 7d
Fishery Location	ICES Subarea 4 and Division 7d (North Sea and eastern English Channel)
Management Authority (Country/ State)	UK & EU
Gear Type(s)	Demersal trawls and seines
Outcome of Assessment	
Peer Review Evaluation	Agree with assessor's determination
Recommendation	Approved

Table 2. Assessment Determination

Assessment Determination
<p>Whiting has been classified on the IUCN Red List as Least Concern, and does not appear in the CITES appendices. Whiting in ICES Subarea 4 and Division 7d is managed under a TAC, and target and limit reference points have been established. The byproduct was therefore assessed under Category C. All landings including discards and undersized landings are included in the stock assessment. The most recent stock assessment concluded that SSB was above the target and limit reference points. Whiting in ICES Subarea 4 and Division 7d therefore meets the MarinTrust byproduct requirements and should be approved for use as a raw material.</p>
Fishery Assessment Peer Review Comments
<p>The assessor correctly classified Whiting in ICES Subarea 4 and Division 7d as a category C species, as biomass-based target and limit reference points have been established for the stock.</p> <p>A stock assessment is conducted annually by the ICES Working Group on the Assessment of Demersal Stocks in the North Sea and Skagerrak (WGNSSK). Fishery removals are considered in the stock assessment process. In the most recent stock assessment, SSB_{2023} was projected to be well above the target and limit reference points.</p> <p>Therefore, Whiting in ICES Subarea 4 and Division 7d may be approved under the Marin Trust v 2.0 by-products standard.</p>
Notes for On-site Auditor

Species Categorisation

NB: If any species is categorised as Endangered or Critically Endangered on the IUCN Red List, or if it appears in CITES Appendix 1, it **cannot** be approved for use as a MarinTrust raw material.

IUCN Red list Category

By-product material from a species listed by IUCN (the International Union for Conservation of Nature) under the Red List for the following categories shall immediately fail the assessment;

- EXTINCT (E) AND EXTINCT IN THE WILD (EW)
- CRITICALLY ENDANGERED (CR) facing an extremely high risk of extinction in the wild.
- ENDANGERED (EN) facing a very high risk of extinction in the wild.

By-product material may be used from the following categories provided that all clauses in the MarinTrust standard are passed.

- VULNERABLE (VU) facing a high risk of extinction in the wild.
- NEAR THREATENED (NT) does not qualify for above now, but is close or is likely to qualify for, a threatened category in the near future.
- LEAST CONCERN (LC) Widespread and abundant.
- DATA DEFICIENT (DD) and NOT EVALUATED (NE)

Table 3 Species Categorisation Table

Common name	Latin name	Stock	Management	Category	IUCN Red List Category ¹	CITES Appendix 1 ²
Whiting	<i>Merlangius merlangus</i>	ICES Subarea 4 and Division 7d	Yes	C	Least Concern ³	No

¹ <https://www.iucnredlist.org/>

² <https://cites.org/eng/app/appendices.php>

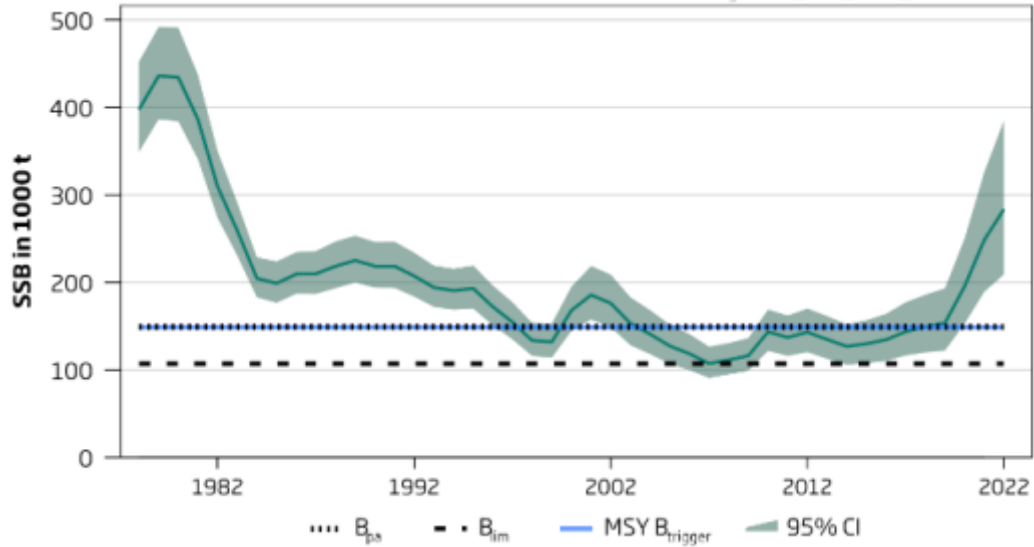
³ <https://www.iucnredlist.org/species/198585/45097610>

CATEGORY C SPECIES

In a by-product assessment, Category C species are those which are subject to a species-specific management regime and are usually targeted species in fisheries for human consumption.

Clause C1 should be completed for each Category C species. If there are no Category C species in the fishery under assessment, this section can be deleted. Where a species fails this Clause, it should be assessed as a Category D species instead.

Species Name		Whiting (<i>Merlangius merlangus</i>)	
C1	Category C Stock Status - Minimum Requirements		
	C1.1	Fishery removals of the species in the fishery under assessment are included in the stock assessment process, OR are considered by scientific authorities to be negligible.	PASS
	C1.2	The species is considered, in its most recent stock assessment, to have a biomass above the limit reference point (or proxy), OR removals by the fishery under assessment are considered by scientific authorities to be negligible.	PASS
			Clause outcome: PASS
<p>C1.1 Fishery removals of the species in the fishery under assessment are included in the stock assessment process, OR are considered by scientific authorities to be negligible.</p> <p>A stock assessment is conducted annually by the ICES Working Group on the Assessment of Demersal Stocks in the North Sea and Skagerrak (WGNSSK). The most recent stock assessment used “Commercial catches (international catches, ages from catch sampling by metier, since 2978)” (ICES 2022). The stock assessment also includes discards and “below minimum size” (BMS) landings. The annual ICES advice includes a section on “issues relevant for the advice” where any concerns over the robustness of data are raised; in the most recent advice this section does not include any concerns regarding the catch data. All fishery removals are included in the assessment and C1.1 is met.</p>			
<p>C1.2 The species is considered, in its most recent stock assessment, to have a biomass above the limit reference point (or proxy), OR removals by the fishery under assessment are considered by scientific authorities to be negligible.</p> <p>Target and limit biomass reference points are established for the stock. Target reference points $MSY B_{trigger}$, B_{pa} and $MAP MSY B_{trigger}$ are set at 148,888t. Limit reference points B_{lim} and $MAP B_{lim}$ are set at 107,146t. In the most recent stock assessment SSB in 2023 was projected to be 294,175t, considerably above both the target and limit reference points. The June 2022 ICES advice stated that “Fishing pressure on the stock is below F_{MSY} and spawning-stock size is above $MSY B_{trigger}$, B_{pa}, and B_{lim}” (ICES 2022). The stock biomass is considered to be above the limit reference point and C1.2 is met.</p>			



Whiting in ICES Subarea 4 and Division 7d, SSB trends relative to reference points (ICES 2022).

References

ICES (2022). Whiting (*Merlangius merlangus*) in Subarea 4 and Division 7.d (North Sea and eastern English Channel). In Report of the ICES Advisory Committee, 2022. ICES Advice 2022, whg.27.47d. <https://doi.org/10.17895/ices.advice.19457411>.

Links

MarinTrust Standard clause	1.3.2.2
FAO CCRF	7.5.3
GSSI	D.3.04, D5.01