



## MarinTrust Standard V2

# By-product Fishery Assessment Plaice (*Pleuronectes platessa*) in ICES Division 7.d (eastern English Channel)

**MarinTrust Programme**

Unit C, Printworks

22 Amelia Street

London

SE17 3BZ

E: [standards@marin-trust.com](mailto:standards@marin-trust.com)

T: +44 2039 780 819

**Table 1 Application details and summary of the assessment outcome**

|   |                                   |   |
|---|-----------------------------------|---|
| Fishery Under Assessment                | Species:                          | Plaice ( <i>Pleuronectes platessa</i> )   |
|   | Geographical area:                | FAO 27 north eastern Atlantic Ocean   |
|   | Country of origin of the product: | UK and Ireland  |
|   | Stock:                            | Plaice ( <i>Pleuronectes platessa</i> ) in Division 7.d (eastern English Channel) |
| Date                                    | 10 November 2023                  |   |
| Report Code                             | GBR29                             |   |
| Assessor                                | Ana Elisa Almeida Ayres           |   |
| Country of origin of the product - PASS | Pass (UK and Ireland)             |   |
| Country of origin of the product - FAIL | N/A                               |   |

| Application details and summary of the assessment outcome |                               |                                |                                   |
|---|-------------------------------|--------------------------------|-----------------------------------|
| Company Name(s): Pelagia UK: Aberdeen, Grimsby            |                               |                                |                                   |
| Country: UK and Ireland                                   |                               |                                |                                   |
| Email address:  |                               | Applicant Code:                |                                   |
| Certification Body Details                                |                               |                                |                                   |
| Name of Certification Body:                               |                               | Global Certification Trust/NSF |                                   |
| Assessor  | Peer Reviewer                 | Assessment Days                | Initial/Surveillance/ Re-approval |
| Ana Elisa Almeida Ayres                                   | Matthew Jew                   | 0.5                            | Surveillance 2                    |
| Assessment Period   | November 2023 – November 2024 |                                |                                   |

| Scope Details                         |   |
|---------------------------------------|---|
| Main Species                          | Plaice ( <i>Pleuronectes platessa</i> )   |
| Stock                                 | Plaice ( <i>Pleuronectes platessa</i> ) in Division 7.d (eastern English Channel) |
| Fishery Location                      | FAO 27 north eastern Atlantic Ocean   |
| Management Authority (Country/ State) | European Union (CFP) / UK & Ireland management authorities                        |
| Gear Type(s)                          | Beam trawl, Otter trawl, Trammel nets, other.                                     |
| Outcome of Assessment                 |   |
| Peer Review Evaluation                | Agree with assessor's recommendation  |
| Recommendation                        | <b>APPROVED</b>   |

**Table 2. Assessment Determination**

| Assessment Determination  |
|---|
| <p>If any species is categorised as Endangered or Critically Endangered on Union for Conservation of Nature's Red List of Threatened Species - IUCN's Red List, or if it appears in the Convention on International Trade in Endangered Species of Wild Fauna and Flora - CITES appendices, it cannot be approved for use as MarinTrust raw material. Plaice (<i>Pleuronectes platessa</i>) is not categorised as Endangered or Critically Endangered on IUCN's Red List and does not appear in CITES appendices; therefore, plaice (<i>Pleuronectes platessa</i>) is eligible for approval for use as Marin Trust by-product raw material.</p> <p>ICES is aware of the multiannual management plan (MAP) that has been adopted by the EU for this stock and that ICES considers to be precautionary. There is no agreed shared management plan with UK for this stock, and ICES provides advice according to ICES MSY approach. Catch scenarios consistent with the MAP FMSY ranges are provided.</p> <p>The stock is subject to a specific management regime and reference points are defined, therefore it was assessed under Category C. Fishery removals are included in the stock assessment and it PASSES Clause C1.1. The stock is considered, in its most recent stock assessment, to have biomass above the limit reference point, it PASSES Clause C1.2.</p> <p>Therefore, plaice (<i>Pleuronectes platessa</i>) in FAO area 27 division 7.d (eastern English Channel) is APPROVED for the production of fishmeal and fish oil under the current MarinTrust v2.3 by-products standard.</p> |
| Fishery Assessment Peer Review Comments   |
| <p>The assessor correctly classified plaice (<i>Pleuronectes platessa</i>) in FAO area 27 division 7.d (eastern English Channel) as Category C, the stock is subject to a specific management regime and reference points are defined.</p> <p>Fishery removals are considered in the stock assessment process. The most recent stock assessment shows that the stock is below MSY <math>B_{trigger}</math> and <math>B_{pa}</math>, but <b>above</b> <math>B_{lim}</math>. Therefore, the stock is considered to have biomass above the limit reference point.</p> <p>Plaice (<i>Pleuronectes platessa</i>) in FAO area 27 division 7.d (eastern English Channel) passes both clauses (C1.1 and C1.2) and therefore should be approved under the MarinTrust Standard v.2.3</p>  |
| Notes for On-site Auditor   |
| <p>N/A</p>  |

## Species Categorisation

**NB:** If any species is categorised as Endangered or Critically Endangered on the IUCN Red List, or if it appears in CITES Appendix 1, it **cannot** be approved for use as a MarinTrust raw material.

### IUCN Red list Category

By-product material from a species listed by IUCN (the International Union for Conservation of Nature) under the Red List for the following categories shall immediately fail the assessment;

- EXTINCT (E) AND EXTINCT IN THE WILD (EW)
- CRITICALLY ENDANGERED (CR) facing an extremely high risk of extinction in the wild.
- ENDANGERED (EN) facing a very high risk of extinction in the wild.

By-product material may be used from the following categories provided that all clauses in the MarinTrust standard are passed.

- VULNERABLE (VU) facing a high risk of extinction in the wild.
- NEAR THREATENED (NT) does not qualify for above now, but is close or is likely to qualify for, a threatened category in the near future.
- LEAST CONCERN (LC) Widespread and abundant.
- DATA DEFICIENT (DD) and NOT EVALUATED (NE)

## Table 3 Species Categorisation Table

| Common name | Latin name                   | Stock   | Management   | Category | IUCN Red List Category <sup>1</sup> | CITES Appendix 1 <sup>2</sup> |
|-------------|------------------------------|---|--|----------|-------------------------------------|-------------------------------|
| Plaice      | <i>Pleuronectes platessa</i> | Plaice ( <i>Pleuronectes platessa</i> ) in Division 7.d (eastern English Channel) | European Union (CFP) / UK & Ireland management authorities | C        | LC                                  | No                            |

<sup>1</sup> <https://www.iucnredlist.org/>

<sup>2</sup> <https://cites.org/eng/app/appendices.php>

## CATEGORY C SPECIES

In a by-product assessment, Category C species are those which are subject to a species-specific management regime and are usually targeted species in fisheries for human consumption.

Clause C1 should be completed for each Category C species. If there are no Category C species in the fishery under assessment, this section can be deleted. Where a species fails this Clause, it should be assessed as a Category D species instead.

| Species Name  |  | Plaice ( <i>Pleuronectes platessa</i> )  |                      |
|---|--|--|----------------------|
| C1  | Category C Stock Status - Minimum Requirements |  |                      |
|   | C1.1   | Fishery removals of the species in the fishery under assessment are included in the stock assessment process, OR are considered by scientific authorities to be negligible.  | Yes                  |
|   | C1.2   | The species is considered, in its most recent stock assessment, to have a biomass above the limit reference point (or proxy), OR removals by the fishery under assessment are considered by scientific authorities to be negligible. | Yes                  |
|   |  |  | Clause outcome: Pass |
| <p><b>C1.1 Fishery removals of the species in the fishery under assessment are included in the stock assessment process, OR are considered by scientific authorities to be negligible.</b></p> <p>The last assessment was published in June 2023 and according to ICES (2023): “ICES advises that when the MSY approach is applied, catches in 2024 should be no more than 2 367 tonnes.”</p> <p>The assessment is an age-based analytical assessment (AAP) that uses catches and surveys in the model and in the forecast. The input data consisted in: “Commercial catch (international landings, with age frequencies from catch sampling covering 65% of the landings) and two survey indices: UK-BTS [B2453] and FR-GFS index [G3425] (calculated with delta GAM). Time invariant natural mortality by age is calculated from Peterson and Wroblewski (1984). Fixed maturity ogive is based on biological sampling. Discards are included in the assessment, and all major fleets are covered. In 2022, 69% of the landings had associated discard information, with age frequencies from catch sampling covering 53% of the discards. 72% of the discard estimates are based on observations. The model reconstructs discards for years where data are not available (before 2006). Last benchmarked in 2015 (WKPLE; ICES, 2015), reference points updated in 2022 (WGNSSK; ICES, 2022a). Catches from Division 7.d are reduced by the amount of plaice that originate from the ple.27.420 stock and the ple.27.7e stock. The catches originating from ple.27.420 and ple.27.7e stocks are assumed to be, respectively, 50% and 15% of the mature individuals caught in Division 7.d during the first quarter, derived from tagging data (ICES, 2010).”</p> <p>The catches are represented in Figure 1.</p> |  |  |                      |

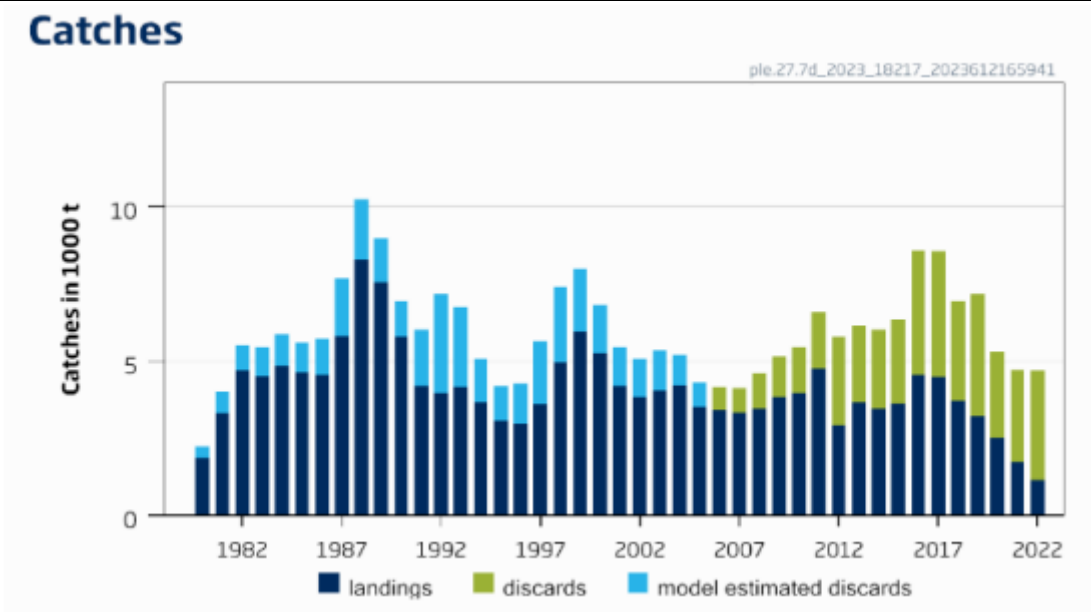


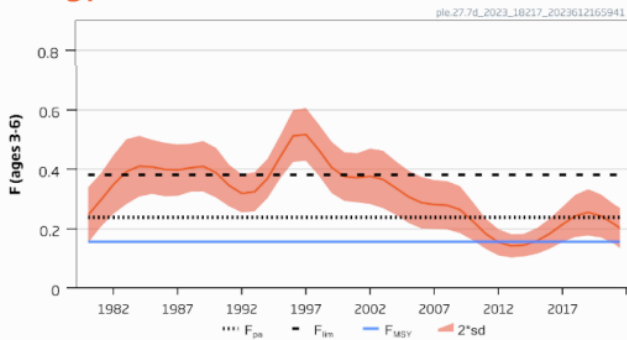
Figure 1. Catches of plaice in Division 7.d (eastern English Channel).

Fishery removals of the species in the fishery under assessment are included in the stock assessment process. C.1.1 is met.

C1.2 The species is considered, in its most recent stock assessment, to have a biomass above the limit reference point (or proxy), OR removals by the fishery under assessment are considered by scientific authorities to be negligible.

According to ICES (2023): “Fishing pressure on the stock is above FMSY but below Fpa and Flim, and spawning-stock size is below MSY B trigger and between Bpa and Blim” (Figure 2).

### Fishing pressure



### SSB

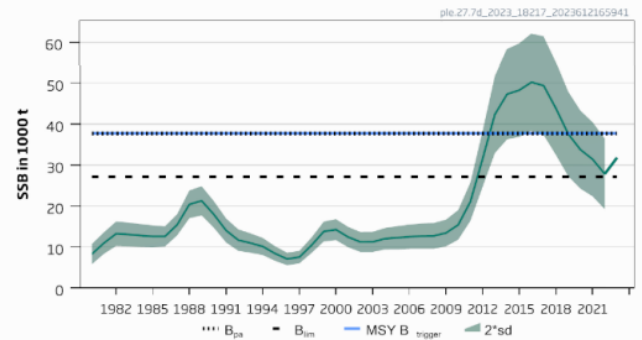


Figure 2. Summary of the stock assessment.

The species is considered, in its most recent stock assessment, to have a biomass above the limit reference point. C.1.2 is met.

### References

ICES. 2023. Plaice (*Pleuronectes platessa*) in Division 7.d (eastern English Channel). In Report of the ICES Advisory Committee, 2023. ICES Advice 2023, ple.27.7d. <https://doi.org/10.17895/ices.advice.21840987>

### Links

|                            |               |
|----------------------------|---------------|
| MarinTrust Standard clause | 1.3.2.2       |
| FAO CCRF                   | 7.5.3         |
| GSSI                       | D.3.04, D5.01 |