



MarinTrust Standard V2

By-product Fishery Assessment

ISL01 – Mackerel in ICES Subareas 1-8 and 14, and Division 9.a

MarinTrust Programme

Unit C, Printworks

22 Amelia Street

London

SE17 3BZ

E: standards@marin-trust.com

T: +44 2039 780 819

Table 1 Application details and summary of the assessment outcome

Fishery Under Assessment	Species:	Mackerel (<i>Scomber scombrus</i>)
	Geographical area:	FAO 27, Northeast Atlantic and Adjacent Waters
	Country of origin of the product:	Iceland
	Stock:	ICES Subareas 1-8 and 14, and Division 9.a
Date	January 2024	
Report Code	ISL01	
Assessor	Sam Peacock	
Country of origin of the product - PASS	Iceland	
Country of origin of the product - FAIL	None	

Application details and summary of the assessment outcome			
Company Name(s): Seyðisfjörður, Fiskimjölsverksmiðja (Lodnuvinnslan hf), Vinnslustödin Fiskimjöl og lysi, Eskja fiskimjölsverks miðja, Fiskimjolsverksmidja (Isfelag Vestmannaeyja), Vopnafjordur			
Country: Iceland			
Email address:		Applicant Code:	
Certification Body Details			
Name of Certification Body:		Global Trust Certification Ltd. / NSF	
Assessor	Peer Reviewer	Assessment Days	Initial/Surveillance/ Re-approval
Sam Peacock	Matthew Jew	0.2	Re-approval
Assessment Period	Jan 2024 – Jan 2025		

Scope Details	
Main Species	Mackerel (<i>Scomber scombrus</i>)
Stock	ICES Subareas 1-8 and 14, and Division 9.a
Fishery Location	FAO 27, Northeast Atlantic and Adjacent Waters
Management Authority (Country/ State)	EU, Iceland, Norway, UK
Gear Type(s)	Pelagic trawl & purse seine
Outcome of Assessment	
Peer Review Evaluation	Agree with assessor's recommendation
Recommendation	APPROVED

Table 2. Assessment Determination

Assessment Determination
<p>If any species is categorised as Endangered or Critically Endangered on IUCN’s Red List, or if it appears in the CITES appendices, it cannot be approved for use as Marin trust raw material. Atlantic mackerel (<i>Scomber scombrus</i>) has been categorised by the IUCN as Least Concern and does not appear in the CITES appendices. Therefore, <i>Scomber scombrus</i> is eligible for approval for use as Marin trust by-product raw material.</p> <p>Mackerel in the Northeast Atlantic is managed relative to target and limit reference points and was therefore assessed under Category C.</p> <p>The ICES Working Group on Widely Distributed Stocks conducts regular stock assessments of this mackerel stock the most recent of which was carried out in 2023. The stock assessment incorporated catch and discard data, and concluded that SSB was larger than the target reference point level. Thus, it passes Clauses C1.1 and C1.2.</p> <p>The byproduct therefore meets the MT requirements and should be re-approved for use as a raw material.</p>
Fishery Assessment Peer Review Comments
<p>The assessor correctly classified Atlantic mackerel (<i>Scomber scombrus</i>) ICES Subareas 1-8, 14 and Division 9.a as Category C, the stock is subject to a specific management regime and reference points are defined.</p> <p>Fishery removals are considered in the stock assessment process. The most recent stock assessment shows that the stock is above $MSY B_{trigger}$, B_{pa}, and B_{lim}. Therefore, because the stock has biomass above target reference point, it is considered to have biomass above the limit reference point.</p> <p>Atlantic mackerel (<i>Scomber scombrus</i>) ICES Subareas 1-8, 14 and Division 9.a passes both clauses (C1.1 and C1.2) and therefore should be approved under the MarinTrust Standard v.2.3.</p>
Notes for On-site Auditor
<p>N/A</p>

Species Categorisation

NB: If any species is categorised as Endangered or Critically Endangered on the IUCN Red List, or if it appears in CITES Appendix 1, it **cannot** be approved for use as a MarinTrust raw material.

IUCN Red list Category

By-product material from a species listed by IUCN (the International Union for Conservation of Nature) under the Red List for the following categories shall immediately fail the assessment;

- EXTINCT (E) AND EXTINCT IN THE WILD (EW)
- CRITICALLY ENDANGERED (CR) facing an extremely high risk of extinction in the wild.
- ENDANGERED (EN) facing a very high risk of extinction in the wild.

By-product material may be used from the following categories provided that all clauses in the MarinTrust standard are passed.

- VULNERABLE (VU) facing a high risk of extinction in the wild.
- NEAR THREATENED (NT) does not qualify for above now, but is close or is likely to qualify for, a threatened category in the near future.
- LEAST CONCERN (LC) Widespread and abundant.
- DATA DEFICIENT (DD) and NOT EVALUATED (NE)

Table 3 Species Categorisation Table

Common name	Latin name	Stock	Management	Category	IUCN Red List Category ¹	CITES Appendix 1 ²
Atlantic Mackerel	<i>Scomber scombrus</i>	ICES Subareas 1-8 and 14, and Division 9.a	Yes	C	Least Concern ³	No

¹ <https://www.iucnredlist.org/>

² <https://cites.org/eng/app/appendices.php>

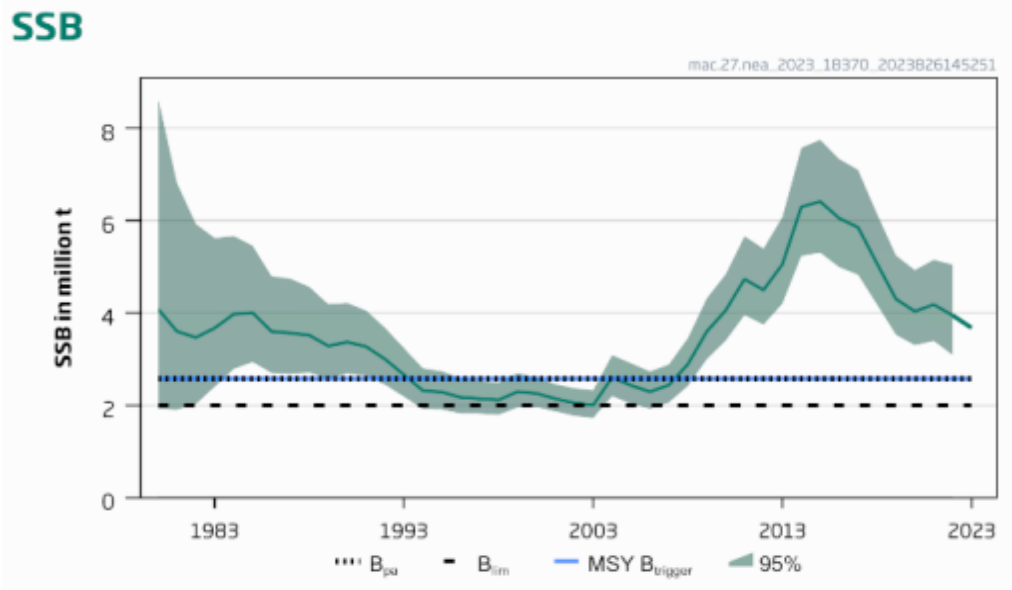
³ <https://www.iucnredlist.org/species/170354/18207463>

CATEGORY C SPECIES

In a by-product assessment, Category C species are those which are subject to a species-specific management regime and are usually targeted species in fisheries for human consumption.

Clause C1 should be completed for each Category C species. If there are no Category C species in the fishery under assessment, this section can be deleted. Where a species fails this Clause, it should be assessed as a Category D species instead.

Species Name		Atlantic Mackerel (<i>Scomber scombrus</i>)	
C1	Category C Stock Status - Minimum Requirements		
	C1.1	Fishery removals of the species in the fishery under assessment are included in the stock assessment process, OR are considered by scientific authorities to be negligible.	PASS
	C1.2	The species is considered, in its most recent stock assessment, to have a biomass above the limit reference point (or proxy), OR removals by the fishery under assessment are considered by scientific authorities to be negligible.	PASS
			Clause outcome: PASS
<p>C1.1 Fishery removals of the species in the fishery under assessment are included in the stock assessment process, OR are considered by scientific authorities to be negligible.</p> <p>Mackerel in the Northeast Atlantic is subjected to regular stock assessment by the ICES Working Group on Widely Distributed Stocks (WGWIDE). The most recent assessment was conducted in 2023 using an age-based analytical model which incorporated catches in the model and the forecast. The assessment also incorporates three survey indices and the available discarding estimates, although discarding in recent years is assumed to be negligible. The catch advice includes a section discussing the quality of the assessment, which does not raise any substantial concerns (ICES 2023). Therefore, fishery removals of the stock, including from the fishery under assessment, are included in the stock assessment process. C1.1 is met.</p> <p>C1.2 The species is considered, in its most recent stock assessment, to have a biomass above the limit reference point (or proxy), OR removals by the fishery under assessment are considered by scientific authorities to be negligible.</p> <p>The ICES catch advice provides an indication of the current estimated stock status relative to target and limit reference points. The target reference points $MSY B_{trigger}$ and B_{pa} have been set at 2,580,000t. The limit reference point B_{lim} has been set at 2,000,000t. The 2023 stock assessment projected SSB at spawning time in 2023 would be 3,681,064t, substantially larger than the target reference point. The catch advice concludes, "spawning-stock size is above $MSY B_{trigger}$, B_{pa}, and B_{lim}" (ICES 2023). SSB is estimated to be well above the limit reference point in the most recent stock assessment. C1.2 is met.</p>			



Mackerel in the Northeast Atlantic, estimated SSB relative to current target and limit reference points (ICES 2023)

References

ICES (2023). Mackerel (*Scomber scombrus*) in subareas 1–8 and 14 and division 9.a (the Northeast Atlantic and adjacent waters). In Report of the ICES Advisory Committee, 2023. ICES Advice 2023, mac.27.nea, <https://doi.org/10.17895/ices.advice.21856533>

Links

MarinTrust Standard clause	1.3.2.2
FAO CCRF	7.5.3
GSSI	D.3.04, D5.01