



MarinTrust Standard V2

By-product Fishery Assessment Deepwater redfish (*Sebastes mentella*) in FAO 27, ICES Subareas 1 & 2 (Northeast Arctic)

MarinTrust Programme

Unit C, Printworks

22 Amelia Street

London

SE17 3BZ

E: standards@marin-trust.com

T: +44 2039 780 819

Table 1 Application details and summary of the assessment outcome

Fishery Under Assessment	Species:	Deepwater/Beaked redfish (<i>Sebastes mentella</i>)
	Geographical area:	ICES Subareas 1 & 2 (Northeast Arctic)
	Country of origin of the product:	Norway
	Stock:	Beaked redfish (<i>Sebastes mentella</i>) in subareas 1 and 2 (Northeast Arctic)
Date	08 th February 2024	
Report Code	NOR02	
Assessor	Ana Elisa Almeida Ayres	
Country of origin of the product - PASS	Norway	
Country of origin of the product - FAIL	N/A	

Application details and summary of the assessment outcome			
Company Name(s): TripleNine Vedde AS			
Country: Norway			
Email address:		Applicant Code:	
Certification Body Details			
Name of Certification Body:		Global Certification Trust/NSF	
Assessor	Peer Reviewer	Assessment Days	Initial/Surveillance/Re-approval
Ana Elisa Almeida Ayres	Lea Lebechnech	0.5	Re-approval
Assessment Period	February 2024 – February 2025		

Scope Details	
Main Species	Deepwater/Beaked redfish (<i>Sebastes mentella</i>)
Stock	Beaked redfish (<i>Sebastes mentella</i>) in subareas 1 and 2 (Northeast Arctic)
Fishery Location	ICES Subareas 1 & 2 (Northeast Arctic)
Management Authority (Country/ State)	Norwegian Directorate of Fisheries, Joint Norwegian-Russian Fisheries Commission
Gear Type(s)	Pelagic and demersal trawl
Outcome of Assessment	
Peer Review Evaluation	Agree with the assessor's determination
Recommendation	APPROVE

Table 2. Assessment Determination

Assessment Determination
<p>If any species is categorised as Endangered or Critically Endangered on Union for Conservation of Nature's Red List of Threatened Species - IUCN's Red List, or if it appears in the Convention on International Trade in Endangered Species of Wild Fauna and Flora - CITES appendices, it cannot be approved for use as MarinTrust raw material.</p> <p>Deepwater redfish (<i>Sebastes mentella</i>) is listed as "endangered" on Nature's Red List of Threatened Species - IUCN's Red List for European assessment, and as "least concern" for global assessment. However, both of the assessments are more than 8 years old. The European assessment covers <i>S. mentella</i> in the Faroe Islands; Iceland; Norway; Russian Federation (European Russia); Svalbard and Jan Mayen; United Kingdom (Great Britain, Northern Ireland) and was last undertaken on 16 October 2013 and published in 2015. The global assessment covers <i>S. mentella</i> in Canada; Faroe Islands; Greenland; Iceland; Norway; Svalbard and Jan Mayen and was last undertaken in 2010, with an erratum version published in 2017. Moreover, the latest stock assessment, which was published in September 2022, shows the stock is well above both its limit and BMSY trigger reference points.</p> <p>According to MarinTrust's By-product Fishery Assessment Interpretation and Guidance Document (Doc ID4 - Issued January 2022 – Version 2.2):</p> <p>"If the IUCN assessment was completed more than 5 years prior to the time of the assessment please refer to the most recent stock assessment, ICES advice2, current national legislation or international binding agreements (...)</p> <p>Species listed under CITES Appendix 1 and those listed by IUCN as EN, CE shall be considered ETP species, unless it can be shown that the particular stock of the CITES/IUCN listed species impacted by the fishery under assessment is not endangered, as can be shown by the most recent stock assessment where biomass is above the limit reference point."</p> <p>Therefore, deepwater redfish is eligible for approval for use as Marin Trust by-product raw material.</p> <p>Deepwater redfish has been assessed under Category C stock, as it has a species-specific management plan in place including stock assessment, defined reference points and a TAC. Due to the suspension of Russian scientists from ICES, the last assessment was conducted by a Joint Russian-Norwegian working group on Arctic Fisheries (JRN-AFWG) and it has been conducted following the previous procedures and based on the methodology agreed at the ICES benchmark in 2018. The stock passes both Clauses in C1 as fishery removals of deepwater/beaked redfish are included in the stock assessment process and the stock is considered, in its most recent assessment, to have a biomass above the limit reference point.</p> <p>Therefore, deepwater/beaked redfish (<i>Sebastes mentella</i>) in ICES Subareas 1 & 2 (Northeast Arctic) is APPROVED for the production of fishmeal and fish oil under the current MarinTrust v2.3 by-products standard.</p>
Fishery Assessment Peer Review Comments
<p>The assessor correctly classified deepwater/beaked redfish (<i>Sebastes mentella</i>) in ICES Subareas 1 & 2 (Northeast Arctic) under Category C, as the stock is subject to a specific management regime and reference points are defined.</p> <p>Additionally, and as it was explained in last year's report, guidance from Doc ID4 was correctly applied as the IUCN red list assessment that lists <i>Sebastes mentella</i> as endangered (EN) is greater than 5 years old and thus the most recent stock assessment, JRN-AFWG, current national legislations, or internationally binding agreements take precedence. Deepwater redfish is eligible for approval for use as Marin Trust RS by-product raw material Fishery removals are considered in the stock assessment process.</p> <p>Fishery removals are considered in the stock assessment process and the most recent stock assessment shows that the stock is above Bpa and Blim. Therefore, the stock is considered to have biomass above the limit reference point. Clauses C1.1 and C1.2 are passed.</p>

In conclusion, deepwater/beaked redbfish (*Sebastes mentella*) in ICES Subareas 1 & 2 (Northeast Arctic) should be approved under the MarinTrust Standard v2.3.

Notes for On-site Auditor

--

Species Categorisation

NB: If any species is categorised as Endangered or Critically Endangered on the IUCN Red List, or if it appears in CITES Appendix 1, it **cannot** be approved for use as a MarinTrust raw material.

IUCN Red list Category

By-product material from a species listed by IUCN (the International Union for Conservation of Nature) under the Red List for the following categories shall immediately fail the assessment;

- EXTINCT (E) AND EXTINCT IN THE WILD (EW)
- CRITICALLY ENDANGERED (CR) facing an extremely high risk of extinction in the wild.
- ENDANGERED (EN) facing a very high risk of extinction in the wild.

By-product material may be used from the following categories provided that all clauses in the MarinTrust standard are passed.

- VULNERABLE (VU) facing a high risk of extinction in the wild.
- NEAR THREATENED (NT) does not qualify for above now, but is close or is likely to qualify for, a threatened category in the near future.
- LEAST CONCERN (LC) Widespread and abundant.
- DATA DEFICIENT (DD) and NOT EVALUATED (NE)

Table 3 Species Categorisation Table

Common name	Latin name	Stock	Management	Category	IUCN Red List Category ¹	CITES Appendix 1 ²
Deepwater/beaked redfish	<i>Sebastes mentella</i>	Beaked redfish (<i>Sebastes mentella</i>) in subareas 1 and 2 (Northeast Arctic)	Norwegian Directorate of Fisheries, Joint Norwegian-Russian Fisheries Commission	C	EN (Europe) LC (Global)	No

¹ <https://www.iucnredlist.org/>

² <https://cites.org/eng/app/appendices.php>

CATEGORY C SPECIES

In a by-product assessment, Category C species are those which are subject to a species-specific management regime and are usually targeted species in fisheries for human consumption.

Clause C1 should be completed for each Category C species. If there are no Category C species in the fishery under assessment, this section can be deleted. Where a species fails this Clause, it should be assessed as a Category D species instead.

Species Name		Deepwater/beaked redfish (<i>Sebastes mentella</i>)	
C1	Category C Stock Status - Minimum Requirements		
	C1.1	Fishery removals of the species in the fishery under assessment are included in the stock assessment process, OR are considered by scientific authorities to be negligible.	Yes
	C1.2	The species is considered, in its most recent stock assessment, to have a biomass above the limit reference point (or proxy), OR removals by the fishery under assessment are considered by scientific authorities to be negligible.	Yes

Clause outcome: Pass

C1.1 Fishery removals of the species in the fishery under assessment are included in the stock assessment process, OR are considered by scientific authorities to be negligible.

Due to the suspension of Russian scientists from ICES, the assessment was conducted by a Joint Russian-Norwegian working group on Arctic Fisheries (JRN-AFWG) consisting of scientists from VNIRO (Russia) and IMR (Norway). This advice has been conducted outside ICES and should not be considered as ICES advice. However, the assessment has been conducted following the previous procedures and based on the methodology agreed at the ICES benchmark in 2018. The ad hoc JRN-AFWG advises that when the status quo approach is applied, catches in 2023 should be no more than 66,779 tonnes, and catches in 2024 should be no more than 70,164 tonnes (JRN-AFWG, 2023).

The model that was used was Statistical catch-at-age model. The input data consisted of commercial catches: international landings (tonnes), age frequencies and weight-at-age from catch sampling of the pelagic and demersal fisheries and from the survey; survey indices: numbers-at-age from BS-NoRu-Q1-Btr, Eco-NoRu-Q3-Btr, Ru-Q4-Btr; proportion-at-age from deep pelagic ecosystem survey annual maturity data from BS-NoRu-Q1-Btr, Eco-NoRu-Q3-Btr, and commercial catch sampling; natural mortalities were fixed at 0.05. Discarding and bycatch were assumed negligible.

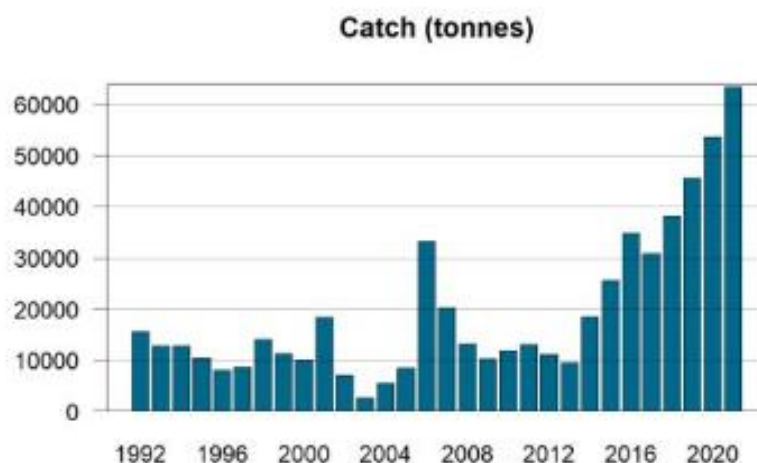


Figure 1. Catches of beaked redfish (*Sebastes mentella*) in subareas 1 and 2 (Northeast Arctic)[JRN-AFWG, 2023].

Fishery removals of the species in the fishery under assessment are included in the stock assessment process. C.1.1 is met.

C1.2 The species is considered, in its most recent stock assessment, to have a biomass above the limit reference point (or proxy), OR removals by the fishery under assessment are considered by scientific authorities to be negligible.

Fishing pressure on the stock is above FMSY19+ and spawning-stock size is above Bpa and Blim (Figure 2).

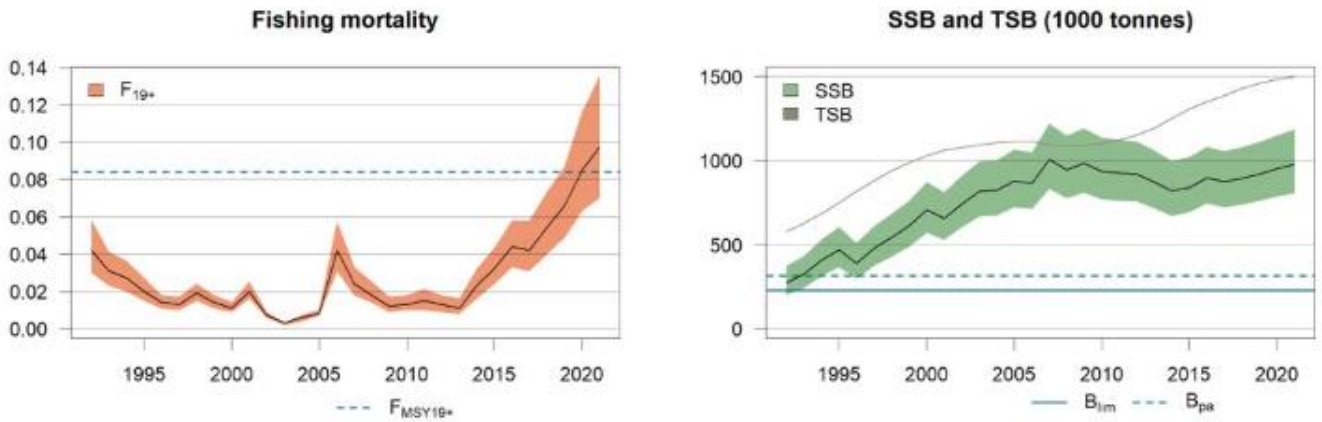


Figure 2. F, SSB and TSB (total stock biomass, age 2+) of beaked redfish in ICES subareas 1 and 2 (Northeast Arctic), with 95 % confidence levels. The biomass reference points relate to SSB (JRN-AFWG, 2023).

The species is considered, in its most recent stock assessment, to have a biomass above the limit reference point (or proxy). C.1.2 is met.

References

JRN-AFWG. 2023. Advice on fishing opportunities for beaked redfish in 2023 and 2024 in ICES subareas 1 and 2. <https://www.hi.no/hi/nettrapporter/imr-pinro-en-2022-5>

Links

MarinTrust Standard clause	1.3.2.2
FAO CCRF	7.5.3
GSSI	D.3.04, D5.01