



## MarinTrust Standard V2

### By-product Fishery Assessment

### *Saithe (Pollachius virens) in FAO 27, ICES subareas 1, 2 (Northeast Arctic)*

**MarinTrust Programme**

Unit C, Printworks

22 Amelia Street

London

SE17 3BZ

E: [standards@marin-trust.com](mailto:standards@marin-trust.com)

T: +44 2039 780 819

**Table 1 Application details and summary of the assessment outcome**

Fishery Under Assessment	Species:	Saithe ( <i>Pollachius virens</i> )
	Geographical area:	FAO Area 27 Northeast Atlantic
	Country of origin of the product:	Norway
	Stock:	Saithe in FAO 27 ICES Subareas 1 & 2 (Northeast Arctic)
Date	22 May 2023	
Report Code	NOR09	
Assessor	Léa Lebechnech	
Country of origin of the product - PASS	Norway	
Country of origin of the product - FAIL	NA	

Application details and summary of the assessment outcome			
Company Name(s): Bodø Sildoljefabrikk, Egersund Sildoljefabrikk, Karmsund, Måløy Sildoljefabrikk, Prima Protein AS, TripleNine Vedde AS			
Country: Norway			
Email address:		Applicant Code:	
Certification Body Details			
Name of Certification Body:		Global Trust Certification	
Assessor	Peer Reviewer	Assessment Days	Initial/Surveillance/ Re-approval
Léa Lebechnech	Matthew Jew	0.5	Surveillance 1
Assessment Period	To May 2023		

Scope Details	
Main Species	Saithe ( <i>Pollachius virens</i> )
Stock	Saithe in FAO 27 ICES Subareas 1 & 2 (Northeast Arctic)
Fishery Location	FAO Area 27 Northeast Atlantic
Management Authority (Country/ State)	Norway/European Union (Common Fisheries Policy-CFP)
Gear Type(s)	Bottom trawls, others, gillnets, purse seine
Outcome of Assessment	
Peer Review Evaluation	
Recommendation	<b>APPROVED</b>

**Table 2. Assessment Determination**

Assessment Determination
<p>If any species is categorised as Endangered or Critically Endangered on IUCN’s Red List, or if it appears in the CITES appendices, it cannot be approved for use as Marin Trust raw material. Saithe (<i>Pollachius virens</i>) is considered “least concern” by IUCN: it is then not listed as Endangered or Critically Endangered on IUCN’s Red List and not listed in CITES appendices; therefore, saithe is eligible for approval for use as MarinTrust by-product raw material.</p> <p>ICES is aware of a Norwegian management plan for this species. Reference points are defined for the stock, therefore it was assessed under category C.</p> <p>Fishery removals are included in the stock assessment process, so the stock PASSES Clause C1.1. The stock is considered, in its most recent stock assessment, to have a biomass above the limit reference point, it PASSES Clause C1.2.</p> <p>Therefore, saithe in ICES Subareas 1 and 2 (Northeast Arctic) is <b>APPROVED</b> for the production of fishmeal and fish oil under the current MarinTrust v 2.0 by-products.</p>
Fishery Assessment Peer Review Comments
<p>The assessor correctly classified saithe in ICES Subareas 1 and 2 (Northeast Arctic) as Category C, the stock is subject to a specific management regime and reference points are defined.</p> <p>Fishery removals are considered in the stock assessment process. The most recent stock assessment shows that the stock is above MSY <math>B_{trigger}</math>, <math>B_{pa}</math>, and <math>B_{lim}</math>. Therefore, the stock is considered to have biomass above the limit reference point.</p> <p>Saithe in ICES Subareas 1 and 2 (Northeast Arctic) passes both clauses (C1.1 and C1.2) and therefore should be approved under the MarinTrust Standard v.2.</p>
Notes for On-site Auditor
<p>N/A</p>

## Species Categorisation

**NB:** If any species is categorised as Endangered or Critically Endangered on the IUCN Red List, or if it appears in CITES Appendix 1, it **cannot** be approved for use as an MarinTrust raw material.

### IUCN Red list Category

By-product material from a species listed by IUCN (the International Union for Conservation of Nature) under the Red List for the following categories shall immediately fail the assessment;

- EXTINCT (E) AND EXTINCT IN THE WILD (EW)
- CRITICALLY ENDANGERED (CR) facing an extremely high risk of extinction in the wild.
- ENDANGERED (EN) facing a very high risk of extinction in the wild.

By-product material may be used from the following categories provided that all clauses in the MarinTrust standard are passed.

- VULNERABLE (VU) facing a high risk of extinction in the wild.
- NEAR THREATENED (NT) does not qualify for above now, but is close or is likely to qualify for, a threatened category in the near future.
- LEAST CONCERN (LC) Widespread and abundant.
- DATA DEFICIENT (DD) and NOT EVALUATED (NE)

## Table 3 Species Categorisation Table

Common name	Latin name	Stock	Management	Category	IUCN Red List Category <sup>1</sup>	CITES Appendix 1 <sup>2</sup>
Saithe	<i>Pollachius virens</i>	Saithe in subareas 1 and 2 (Northeast Arctic)	Norway / European Union	C	LC	No

<sup>1</sup> <https://www.iucnredlist.org/>

<sup>2</sup> <https://cites.org/eng/app/appendices.php>

## CATEGORY C SPECIES

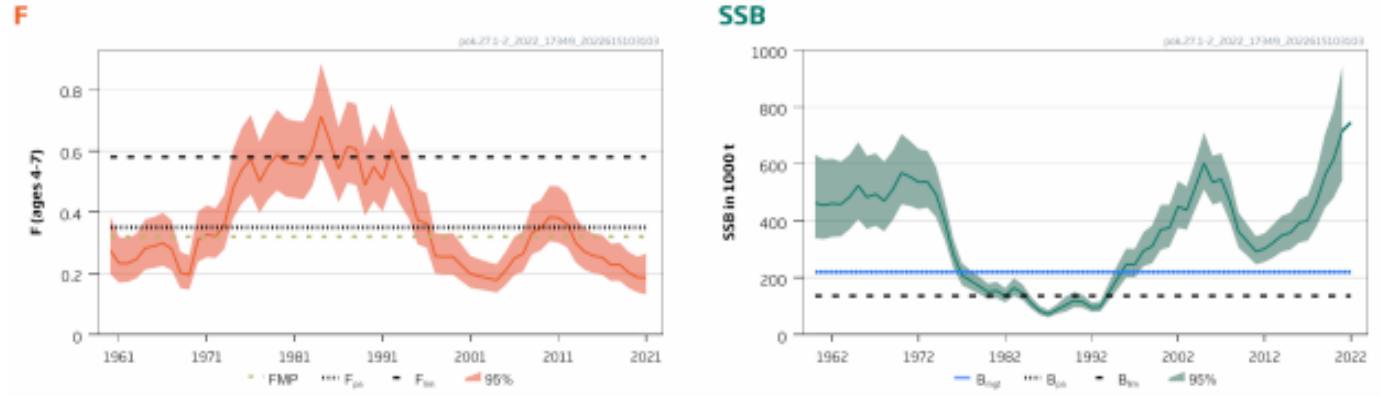
In a by-product assessment, Category C species are those which are subject to a species-specific management regime and are usually targeted species in fisheries for human consumption.

Clause C1 should be completed for each Category C species. If there are no Category C species in the fishery under assessment, this section can be deleted. Where a species fails this Clause, it should be assessed as a Category D species instead.

<b>Species Name</b>		Saithe ( <i>Pollachius virens</i> )	
<b>C1</b>	<b>Category C Stock Status - Minimum Requirements</b>		
	<b>C1.1</b>	Fishery removals of the species in the fishery under assessment are included in the stock assessment process, OR are considered by scientific authorities to be negligible.	Yes
	<b>C1.2</b>	The species is considered, in its most recent stock assessment, to have a biomass above the limit reference point (or proxy), OR removals by the fishery under assessment are considered by scientific authorities to be negligible.	Yes
			<b>Clause outcome:</b> <b>PASS</b>
<p><b>C1.1 Fishery removals of the species in the fishery under assessment are included in the stock assessment process, OR are considered by scientific authorities to be negligible.</b></p> <p>ICES advises that when the Norwegian management plan is applied, catches in 2023 should be no more than 226 794 tonnes. Bycatches of coastal cod and golden redfish (<i>Sebastes norvegicus</i>) in fisheries targeting saithe in subareas 1 and 2 should be kept as low as possible.</p> <p>The assessment type is an Age-based analytical assessment (SAM) that uses landings in the model and in the forecast.</p> <p>The input data considered in the last stock assessment are the following: Commercial catches (international landings, ages and length frequencies from Norwegian, German, and Russian catch sampling); one survey index from the Norwegian coastal survey Q4 (A6335, split in 2002) recalculated using StoX from 2004 onwards; three-year running average maturity based on spawning zones from otoliths from commercial catches and surveys for 1985–2006, constant (2005–2007 average) for later years. Discarding is considered negligible. Bycatch is included.</p> <p>Catches are presented in the figure below:</p> <div style="text-align: center;"> </div> <p><b>Figure 1.</b> Saithe in subareas 1 and 2. Source: ICES, 2022.</p>			
<p>Therefore, fishery removals of the species in the fishery under assessment are included in the stock assessment process, so it PASSES Clause C1.1.</p>			

**C1.2** The species is considered, in its most recent stock assessment, to have a biomass above the limit reference point (or proxy), OR removals by the fishery under assessment are considered by scientific authorities to be negligible.

The fishing pressure on the stock is below  $F_{MP}$ , and the spawning-stock size is above  $MSY B_{trigger}$ ,  $B_{pa}$  and  $B_{lim}$ .



**Figure 2.** Saithe in subareas 1 and 2. Historical development of the stock .  
Source: ICES, 2022.

Therefore, the species is considered, in its most recent stock assessment, to have a biomass above the limit reference point, so it **PASSES** Clause C1.2.

**References**

ICES. 2022. Saithe (*Pollachius virens*) in subareas 1 and 2 (Northeast Arctic). In Report of the ICES Advisory Committee, 2022. ICES Advice 2022, pok.27.1-2, <https://doi.org/10.17895/ices.advice.19453646>.

**Links**

<b>MarinTrust Standard clause</b>	1.3.2.2
<b>FAO CCRF</b>	7.5.3
<b>GSSI</b>	D.3.04, D5.01