



## MarinTrust Standard V2

# By-product Fishery Assessment *NOR23 Saithe in ICES Division 3a and Subarea 4*

**MarinTrust Programme**

Unit C, Printworks

22 Amelia Street

London

SE17 3BZ

E: [standards@marin-trust.com](mailto:standards@marin-trust.com)

T: +44 2039 780 819

**Table 1 Application details and summary of the assessment outcome**

Fishery Under Assessment	Species:	Saithe ( <i>Pollachius virens</i> )
	Geographical area:	North Sea, Rockall and West of Scotland, Skagerrak and Kattegat
	Country of origin of the product:	Norway
	Stock:	ICES Subareas 4 and 6 and Division 3.a
Date	January 2024	
Report Code	NOR23	
Assessor	Sam Peacock	
Country of origin of the product - PASS	Norway	
Country of origin of the product - FAIL	None	

Application details and summary of the assessment outcome			
Company Name(s): Pelagia Bodø Sildoljefabrikk, Pelagia Egersund Sildoljefabrikk, Pelagia Karlsund Fiskemel, Pelagia Karlsund Protein AS, Pelagia Måløy Sildoljefabrikk			
Country: Norway			
Email address:		Applicant Code:	
Certification Body Details			
Name of Certification Body:		Global Trust Certification Ltd. / NSF	
Assessor	Peer Reviewer	Assessment Days	Initial/Surveillance/ Re-approval
Sam Peacock	Matthew Jew	0.2	Initial
Assessment Period	Jan 2024 – Jan 2025		

Scope Details	
Main Species	Saithe ( <i>Pollachius virens</i> )
Stock	ICES Subareas 4 and 6 and Division 3.a
Fishery Location	North Sea, Rockall and West of Scotland, Skagerrak and Kattegat
Management Authority (Country/ State)	EU, Iceland, Norway, UK
Gear Type(s)	Otter trawl, Gillnet & Others
Outcome of Assessment	
Peer Review Evaluation	Agree with assessor's recommendation
Recommendation	APPROVED

## Table 2. Assessment Determination

Assessment Determination
<p>If any species is categorised as Endangered or Critically Endangered on IUCN’s Red List, or if it appears in the CITES appendices, it cannot be approved for use as Marin trust raw material. Saithe (<i>Pollachius virens</i>) has been categorised by the IUCN as a species of Least Concern, and does not appear in the CITES appendices. Therefore, <i>Pollachius virens</i> is eligible for approval for use as Marin trust by-product raw material.</p> <p>There is an EU multiannual management plan (MAP) adopted for Saithe in ICES Subareas 4 and 6 and Division 3.a, however there is no agreement with Norway to this plan. This stock is managed relative to established reference points, and was assessed under Category C.</p> <p>Saithe is subjected to annual stock assessment by the ICES Working Group on the Assessment of Demersal Stocks in the North Sea and Skagerrak, and the assessment takes into account all fishery removals. The most recent assessment, conducted in 2023, concluded that stock biomass was above the target and limit reference points. Thus, it passes Clauses C1.1 and C1.2.</p> <p>The byproduct meets the MT requirements and should be approved for use as a raw material.</p>
Fishery Assessment Peer Review Comments
<p>The assessor correctly classified saithe (<i>Pollachius virens</i>) Division 3.a and Subareas 4 and 6 as Category C, the stock is subject to a specific management regime and reference points are defined.</p> <p>Fishery removals are considered in the stock assessment process. The most recent stock assessment shows that the stock is above <math>MSY B_{trigger}</math>, <math>B_{pa}</math>, and <math>B_{lim}</math>. Therefore, because the stock has biomass above target reference point, it is considered to have biomass above the limit reference point.</p> <p>Saithe (<i>Pollachius virens</i>) Division 3.a and Subareas 4 and 6 passes both clauses (C1.1 and C1.2) and therefore should be approved under the MarinTrust Standard v.2.3.</p>
Notes for On-site Auditor
N/A

## Species Categorisation

**NB:** If any species is categorised as Endangered or Critically Endangered on the IUCN Red List, or if it appears in CITES Appendix 1, it **cannot** be approved for use as a MarinTrust raw material.

### IUCN Red list Category

By-product material from a species listed by IUCN (the International Union for Conservation of Nature) under the Red List for the following categories shall immediately fail the assessment;

- EXTINCT (E) AND EXTINCT IN THE WILD (EW)
- CRITICALLY ENDANGERED (CR) facing an extremely high risk of extinction in the wild.
- ENDANGERED (EN) facing a very high risk of extinction in the wild.

By-product material may be used from the following categories provided that all clauses in the MarinTrust standard are passed.

- VULNERABLE (VU) facing a high risk of extinction in the wild.
- NEAR THREATENED (NT) does not qualify for above now, but is close or is likely to qualify for, a threatened category in the near future.
- LEAST CONCERN (LC) Widespread and abundant.
- DATA DEFICIENT (DD) and NOT EVALUATED (NE)

## Table 3 Species Categorisation Table

Common name	Latin name	Stock	Management	Category	IUCN Red List Category <sup>1</sup>	CITES Appendix 1 <sup>2</sup>
Saithe	<i>Pollachius virens</i>	ICES Subareas 4 and 6 and Division 3.a	Yes	C	Least Concern <sup>3</sup>	No

<sup>1</sup> <https://www.iucnredlist.org/>

<sup>2</sup> <https://cites.org/eng/app/appendices.php>

<sup>3</sup> <https://www.iucnredlist.org/species/190304/45098360>

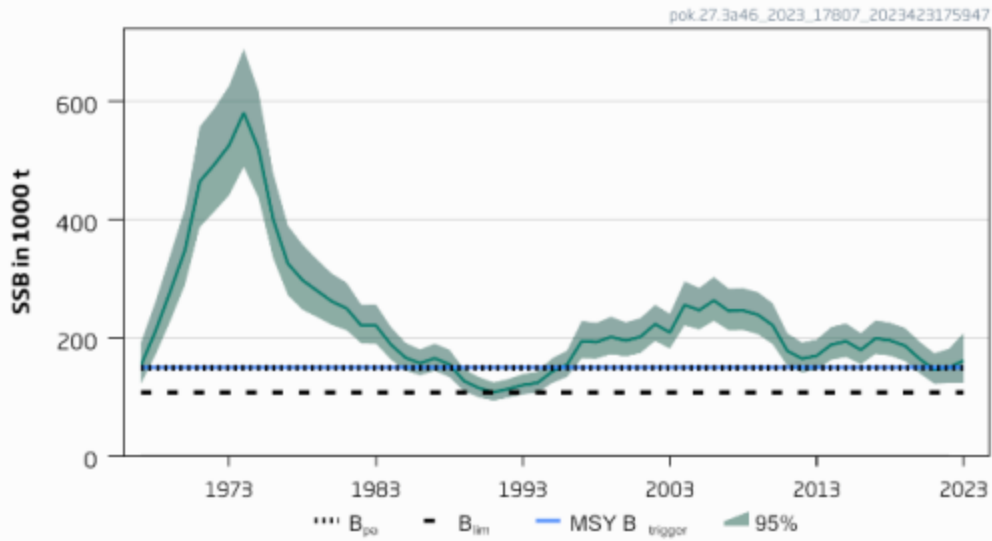
## CATEGORY C SPECIES

In a by-product assessment, Category C species are those which are subject to a species-specific management regime and are usually targeted species in fisheries for human consumption.

Clause C1 should be completed for each Category C species. If there are no Category C species in the fishery under assessment, this section can be deleted. Where a species fails this Clause, it should be assessed as a Category D species instead.

Species Name		Saithe ( <i>Pollachius virens</i> )	
C1	Category C Stock Status - Minimum Requirements		
	C1.1	Fishery removals of the species in the fishery under assessment are included in the stock assessment process, OR are considered by scientific authorities to be negligible.	PASS
	C1.2	The species is considered, in its most recent stock assessment, to have a biomass above the limit reference point (or proxy), OR removals by the fishery under assessment are considered by scientific authorities to be negligible.	PASS
			Clause outcome: PASS
<p><b>C1.1 Fishery removals of the species in the fishery under assessment are included in the stock assessment process, OR are considered by scientific authorities to be negligible.</b></p> <p>Saithe in ICES Subareas 4 and 6 and Division 3.a is subject to regular stock assessment by the ICES Working Group on the Assessment of Demersal Stocks in the North Sea and Skagerrak (WGNSSK). The most recent stock assessment was conducted in 2023, and utilised an age-based analytical assessment which incorporated catch and survey data in the model and the forecast (ICES 2023). Discards were included in the assessment, and the ICES catch advice does not raise any substantial concerns over the accuracy of the assessment outcomes. Therefore, fishery removals of the stock, including from the fishery under assessment, are included in the stock assessment process. <b>C1.1 is met.</b></p> <p><b>C1.2 The species is considered, in its most recent stock assessment, to have a biomass above the limit reference point (or proxy), OR removals by the fishery under assessment are considered by scientific authorities to be negligible.</b></p> <p>The 2023 catch advice provides a summary of the outcome of the stock assessment, including an indication of the status of the stock relative to established reference points. The target reference points MSY <math>B_{trigger}</math>, <math>B_{pa}</math>, and MAP MSY <math>B_{trigger}</math> are set at 149,098t. The limit reference points <math>B_{lim}</math> and MAP <math>B_{lim}</math> are set at 107,297t. The 2023 stock assessment projected that SSB in 2024 would be 177,053t, above the target reference point level. The catch advice states that “spawning-stock size is above MSY <math>B_{trigger}</math>, <math>B_{pa}</math>, and <math>B_{lim}</math>” (ICES 2023). Biomass is estimated to be above the limit reference point in the most recent stock assessment. <b>C1.2 is met.</b></p>			

## Spawning Stock Biomass



Saithe in ICES Subareas 4 and 6 and Division 3.a. Estimated biomass relative to current reference points (ICES 2023)

### References

ICES (2023). Saithe (*Pollachius virens*) in subareas 4 and 6, and in Division 3.a (North Sea, Rockall and West of Scotland, Skagerrak and Kattegat). In Report of the ICES Advisory Committee, 2023. ICES Advice 2023, pok.27.3a46.

<https://doi.org/10.17895/ices.advice.21841008>

### Links

MarinTrust Standard clause	1.3.2.2
FAO CCRF	7.5.3
GSSI	D.3.04, D5.01