



MarinTrust Standard V2

By-product Fishery Assessment Skipjack tuna (*Katsuwonus pelamis*) in FAO 31 & 41

MarinTrust Programme

Unit C, Printworks

22 Amelia Street

London

SE17 3BZ

E: standards@marin-trust.com

T: +44 2039 780 819

Table 1 Application details and summary of the assessment outcome

Fishery Under Assessment	Species:	Skipjack tuna (<i>Katsuwonus pelamis</i>)
	Geographical area:	FAO Area 31 & 41, western Atlantic
	Country of origin of the product:	USA (Flag state(s): Ghana, Belize, Spain, France, Italy)
	Stock:	West Atlantic Skipjack tuna
Date	8 June 2023	
Report Code	USA05	
Assessor	Matthew Jew	
Country of origin of the product - PASS	USA (Flag state(s): Ghana, Belize, Spain, France, Italy)	
Country of origin of the product - FAIL	NA	

Application details and summary of the assessment outcome			
Company Name(s): The Scoular Company - Pioneer Food Cannery Limited (ID preserved)			
Country: USA			
Email address:		Applicant Code:	
Certification Body Details			
Name of Certification Body:		Global Trust Certification	
Assessor	Peer Reviewer	Assessment Days	Initial/Surveillance/ Re-approval
Matthew Jew	Léa Lebechnech	0.5	Surveillance 1
Assessment Period	To February 2023		

Scope Details	
Main Species	Skipjack tuna (<i>Katsuwonus pelamis</i>)
Stock	West Atlantic skipjack tuna
Fishery Location	FAO Area 31 & 41, western Atlantic
Management Authority (Country/ State)	International Commission for the Conservation of Atlantic Tunas (ICCAT)
Gear Type(s)	Purse seine, longline and pole & line
Outcome of Assessment	
Peer Review Evaluation	Agree with the assessor's recommendation
Recommendation	APPROVED

Table 2. Assessment Determination

Assessment Determination
<p>If any species is categorised as Endangered or Critically Endangered on IUCN’s Red List, or if it appears in the CITES appendices, it cannot be approved for use as Marin trust raw material. Skipjack tuna (<i>Katsuwonus pelamis</i>) does not appear as Endangered or Critically Endangered on IUCN’s Red List, and does not appear in CITES appendices; therefore, <i>Katsuwonus pelamis</i> is eligible for approval for use as Marin trust by-product raw material.</p> <p>There are two stocks of skipjack tuna in the Atlantic Ocean. This assessment covers the west Atlantic skipjack tuna stock. This stock is managed at the international level by the International Commission for the Conservation of Atlantic Tunas (ICCAT). ICCAT conducts stock assessments; reference points are defined for the east Atlantic skipjack tuna stock, so it has been assessed under Category C.</p> <p>Fishery removals of the stock are considered in the stock assessment processes, and in the most recent stock assessment, the stock is considered to have a biomass above the limit reference point, therefore it PASSES Clauses C1.1 and C1.2.</p> <p>Therefore, west Atlantic skipjack tuna stock is APPROVED for the production of fishmeal and fish oil under the current Marin Trust v 2.0 by-products.</p>
Fishery Assessment Peer Review Comments
<p>The assessor correctly classified the west Atlantic skipjack tuna under category C, as the stock is managed and reference points are defined to assess the stock status against.</p> <p>Fishery removals from the stock are considered in the stock assessment process, and the most recent stock assessment shows that the stock is considered to have a biomass well above the limit reference point: the fishery passes both clauses C1.1 and C1.2.</p> <p>Therefore, the west Atlantic skipjack tuna is APPROVED for the production of fishmeal and fish oil under the current MarinTrust V2.0 by-products standards.</p>
Notes for On-site Auditor
N/A

Species Categorisation

NB: If any species is categorised as Endangered or Critically Endangered on the IUCN Red List, or if it appears in CITES Appendix 1, it **cannot** be approved for use as a MarinTrust raw material.

IUCN Red list Category

By-product material from a species listed by IUCN (the International Union for Conservation of Nature) under the Red List for the following categories shall immediately fail the assessment;

- EXTINCT (E) AND EXTINCT IN THE WILD (EW)
- CRITICALLY ENDANGERED (CR) facing an extremely high risk of extinction in the wild.
- ENDANGERED (EN) facing a very high risk of extinction in the wild.

By-product material may be used from the following categories provided that all clauses in the MarinTrust standard are passed.

- VULNERABLE (VU) facing a high risk of extinction in the wild.
- NEAR THREATENED (NT) does not qualify for above now, but is close or is likely to qualify for, a threatened category in the near future.
- LEAST CONCERN (LC) Widespread and abundant.
- DATA DEFICIENT (DD) and NOT EVALUATED (NE)

Table 3 Species Categorisation Table

Common name	Latin name	Stock	Management	Category	IUCN Red List Category ¹	CITES Appendix 1 ²
Skipjack tuna	<i>Katsuwonus pelamis</i>	West Atlantic skipjack tuna	ICCAT	C	LC ³	No

¹ <https://www.iucnredlist.org/>

² <https://cites.org/eng/app/appendices.php>

³ <https://www.iucnredlist.org/species/170310/46644566>

CATEGORY C SPECIES

In a by-product assessment, Category C species are those which are subject to a species-specific management regime and are usually targeted species in fisheries for human consumption.

Clause C1 should be completed for each Category C species. If there are no Category C species in the fishery under assessment, this section can be deleted. Where a species fails this Clause, it should be assessed as a Category D species instead.

Species Name		Skipjack tuna (<i>Katsuwonus pelamis</i>)	
C1	Category C Stock Status - Minimum Requirements		
	C1.1	Fishery removals of the species in the fishery under assessment are included in the stock assessment process, OR are considered by scientific authorities to be negligible.	Yes
	C1.2	The species is considered, in its most recent stock assessment, to have a biomass above the limit reference point (or proxy), OR removals by the fishery under assessment are considered by scientific authorities to be negligible.	Yes
Clause outcome:			PASS

C1.1 Fishery removals of the species in the fishery under assessment are included in the stock assessment process, OR are considered by scientific authorities to be negligible.

The stock assessment was conducted in 2022 by ICCAT and uses catch data. This stock is assessed using one production model (JABBA) and one statistical assessment model (Stock Synthesis). Given that the stock status estimated from the JABBA model agreed with the estimated stock status using Stock Synthesis, the Group decided to use the results of the surplus production model as a comparative perception of the western skipjack stock status, but not for the development of management advice.

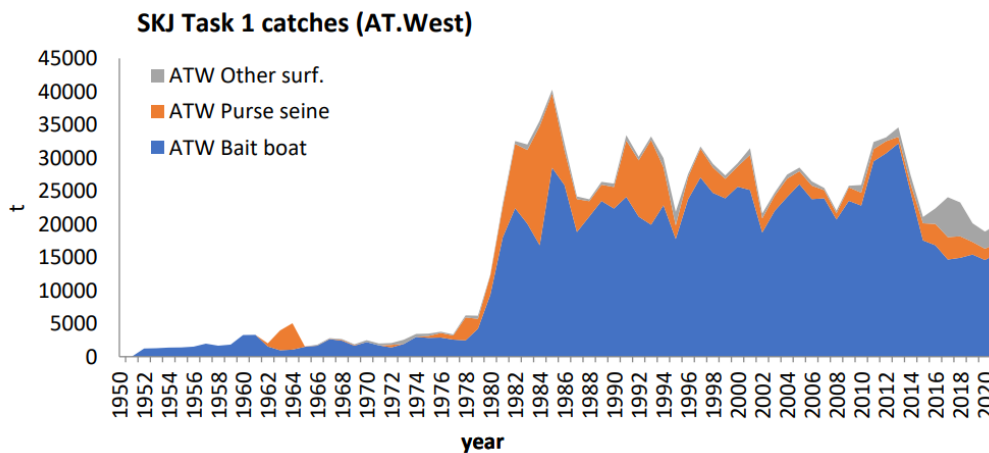


Figure 1. Skipjack tuna catches in the western Atlantic, by gear (1950-2020).
Source: ICCAT 2022.

Therefore, fishery removals of the species in the fishery under assessment are included in the stock assessment process and therefore the stock PASSES clause C1.1.

C1.2 The species is considered, in its most recent stock assessment, to have a biomass above the limit reference point (or proxy), OR removals by the fishery under assessment are considered by scientific authorities to be negligible.

A stock assessment was conducted by ICCAT in 2022 using catch data available to 2020. The assessment concluded that there was a 91% probability that the western Atlantic skipjack tuna stock was not overfished nor experiencing overfishing. Future

constant catches of 20,000 t, close to the current catch (19,951 t in 2021) are expected to maintain the stock in the green quadrant.

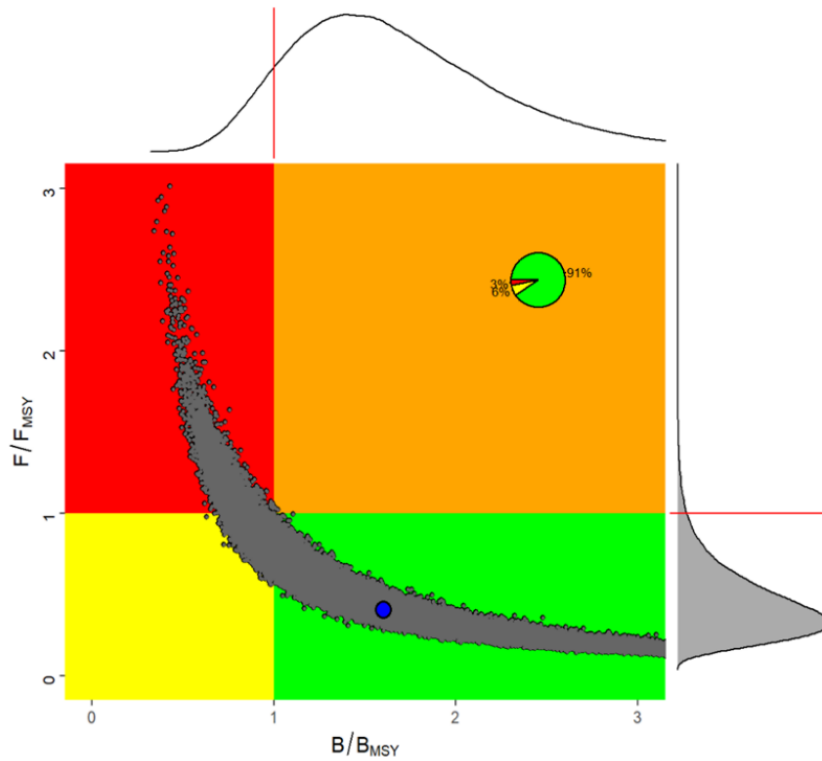


Figure 2. Kobe phase plot for the 9 Stock Synthesis uncertainty grid runs for the western Atlantic skipjack stock. Source: ICCAT 2022.

Therefore, the species is considered, in its most recent stock assessment, to have a biomass above the limit reference point and it PASSES clause C1.2.

References

ICCAT 2022. Species executive summary, skipjack tuna. https://www.iccat.int/Documents/SCRS/ExecSum/SKJ_ENG.pdf

Links

MarinTrust Standard clause	1.3.2.2
FAO CCRF	7.5.3
GSSI	D.3.04, D5.01