



## MarinTrust Standard V2

# By-product Fishery Assessment ZAF06 – European Pilchard (*Sardina pilchardus*) in FAO 27, ICES Divisions 8c and 9a

### MarinTrust Programme

Unit C, Printworks

22 Amelia Street

London

SE17 3BZ

E: [standards@marin-trust.com](mailto:standards@marin-trust.com)

T: +44 2039 780 819

**Table 1 Application details and summary of the assessment outcome**

Fishery Under Assessment	Species:	European sardine ( <i>Sardina pilchardus</i> )
	Geographical area:	ICES Divisions 8c and 9a
	Country of origin of the product:	South Africa
	Stock:	ICES Divisions 8c and 9a
Date	February 2024	
Report Code	ZAF06	
Assessor	Sam Peacock	
Country of origin of the product - PASS	South Africa	
Country of origin of the product - FAIL	None	

Application details and summary of the assessment outcome			
Company Name(s): Amawandle Pelagic (Pty) Ltd, St Helena Bay (Lucky Star Ltd)			
Country: South Africa			
Email address:		Applicant Code:	
Certification Body Details			
Name of Certification Body:		Global Trust Certification Ltd. / NSF	
Assessor	Peer Reviewer	Assessment Days	Initial/Surveillance/ Re-approval
Sam Peacock	Léa Lebechnech	0.2	Initial
Assessment Period	February 2024 – February 2025		

Scope Details	
Main Species	European sardine ( <i>Sardina pilchardus</i> )
Stock	FAO 27, ICES Divisions 8c and 9a
Fishery Location	FAO 27, ICES Divisions 8c and 9a
Management Authority (Country/ State)	EU
Gear Type(s)	Purse seine and pelagic trawl
Outcome of Assessment	
Peer Review Evaluation	Agree with the assessor's determination
Recommendation	APPROVED

## Table 2. Assessment Determination

Assessment Determination
<p>If any species is categorised as Endangered or Critically Endangered on IUCN's Red List, or if it appears in the CITES appendices, it cannot be approved for use as Marin trust raw material. European sardine (<i>Sardina pilchardus</i>) has been categorised by the IUCN as a species of Least Concern, and it does not appear in the CITES appendices. Therefore, European sardine is eligible for approval for use as Marin trust by-product raw material.</p> <p>European sardine in FAO 27, ICES Divisions 8c and 9a is managed relative to established target and limit reference points using TACs, and was therefore assessed under Category C.</p> <p>The stock was most recently subjected to a stock assessment in 2023, using international catch and survey data and applying the assumption that discards and bycatch are negligible. The assessment concluded that stock biomass is currently above the target and limit reference point levels. C1.1 and C1.2 are met.</p> <p>Therefore, European sardine (<i>Sardina pilchardus</i>) in FAO 27, ICES Divisions 8c and 9a is <b>APPROVED</b> for the production of fishmeal and fish oil under the current MarinTrust v2.3 by-products.</p>
Fishery Assessment Peer Review Comments
<p>The assessor correctly classified European pilchard (<i>Sardina pilchardus</i>) in FAO 27, ICES Divisions 8c and 9a under Category C, the stock is subject to a specific management regime and reference points are defined.</p> <p>Fishery removals are considered in the stock assessment process and the most recent stock assessment shows that the stock is above limit reference point. Therefore, the stock is considered to satisfy C1.1. and C1.2.</p> <p>In conclusion, European pilchard (<i>Sardina pilchardus</i>) in FAO 27, ICES Divisions 8c and 9a passes both clauses (C1.1 and C1.2) and therefore should be approved under the MarinTrust Standard v2.3.</p>
Notes for On-site Auditor
N/A

## Species Categorisation

**NB:** If any species is categorised as Endangered or Critically Endangered on the IUCN Red List, or if it appears in CITES Appendix 1, it **cannot** be approved for use as an MarinTrust raw material.

### IUCN Red list Category

By-product material from a species listed by IUCN (the International Union for Conservation of Nature) under the Red List for the following categories shall immediately fail the assessment;

- EXTINCT (E) AND EXTINCT IN THE WILD (EW)
- CRITICALLY ENDANGERED (CR) facing an extremely high risk of extinction in the wild.
- ENDANGERED (EN) facing a very high risk of extinction in the wild.

By-product material may be used from the following categories provided that all clauses in the MarinTrust standard are passed.

- VULNERABLE (VU) facing a high risk of extinction in the wild.
- NEAR THREATENED (NT) does not qualify for above now, but is close or is likely to qualify for, a threatened category in the near future.
- LEAST CONCERN (LC) Widespread and abundant.
- DATA DEFICIENT (DD) and NOT EVALUATED (NE)

## Table 3 Species Categorisation Table

Common name	Latin name	Stock	Management	Category	IUCN Red List Category <sup>1</sup>	CITES Appendix 1 <sup>2</sup>
European sardine	<i>Sardina pilchardus</i>	FAO 27, ICES Divisions 8c and 9a	Yes	C	Least Concern <sup>3</sup>	No

<sup>1</sup> <https://www.iucnredlist.org/>

<sup>2</sup> <https://cites.org/eng/app/appendices.php>

<sup>3</sup> <https://www.iucnredlist.org/species/198580/15542481>

## CATEGORY C SPECIES

In a by-product assessment, Category C species are those which are subject to a species-specific management regime and are usually targeted species in fisheries for human consumption.

Clause C1 should be completed for each Category C species. If there are no Category C species in the fishery under assessment, this section can be deleted. Where a species fails this Clause, it should be assessed as a Category D species instead.

Species Name		European sardine ( <i>Sardina pilchardus</i> )	
C1	Category C Stock Status - Minimum Requirements		
	C1.1	Fishery removals of the species in the fishery under assessment are included in the stock assessment process, OR are considered by scientific authorities to be negligible.	PASS
	C1.2	The species is considered, in its most recent stock assessment, to have a biomass above the limit reference point (or proxy), OR removals by the fishery under assessment are considered by scientific authorities to be negligible.	PASS
			Clause outcome: <b>PASS</b>

**C1.1 Fishery removals of the species in the fishery under assessment are included in the stock assessment process, OR are considered by scientific authorities to be negligible.**

European sardine in FAO 27, ICES Divisions 8c and 9a is subjected to annual stock assessment by the ICES Working Group on Southern Horse Mackerel, Anchovy and Sardine (WGHANSA). The most recent assessment was conducted in 2023 and used an age-based analytical assessment which incorporated catches in the model and the forecast. The assessment also included survey indices and sample data from a number of egg production surveys. Discarding and bycatch are considered negligible.

“ICES advises that when the MSY approach is applied, catches in 2024 should be no more than 38 992 tonnes” (ICES 2023).

The catch advice does not raise any substantial issues with the robustness of the assessment. See Figure 1 for catches.

### Catches

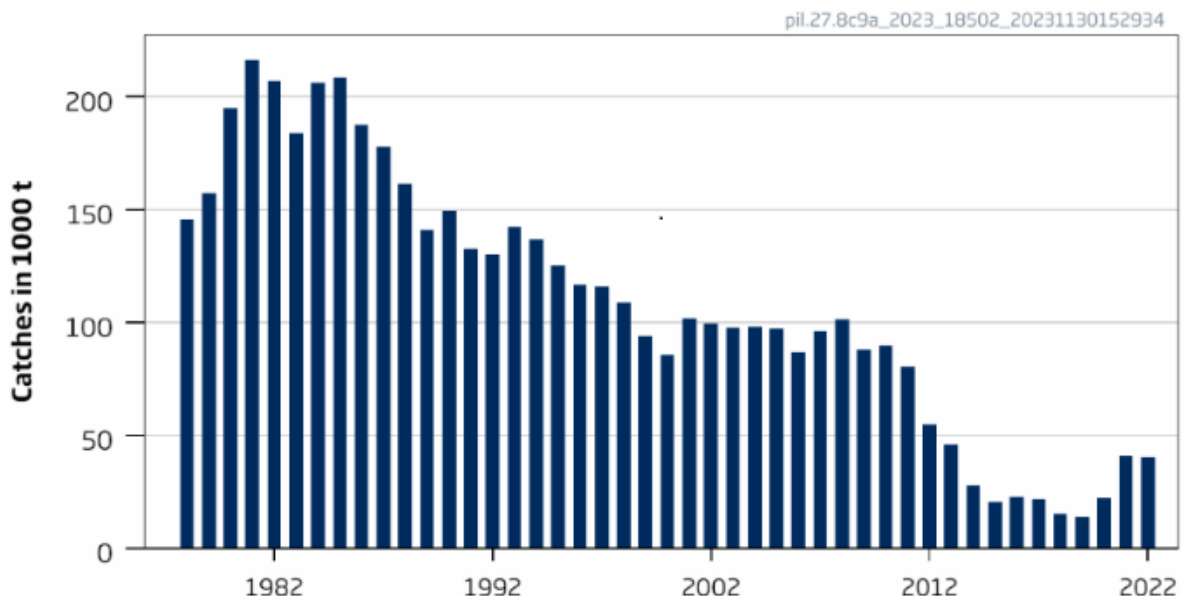


Figure 1. European sardine in ICES Divisions 8c and 9a, catches (ICES 2023).

Therefore, fishery removals of the species in the fishery under assessment are included in the stock assessment process and therefore the stock PASSES clause C1.1.

**C1.2 The species is considered, in its most recent stock assessment, to have a biomass above the limit reference point (or proxy), OR removals by the fishery under assessment are considered by scientific authorities to be negligible.**

The current status of European sardine is indicated in the most recent ICES catch advice, published in December 2023. The target reference points MSY  $B_{trigger}$  and  $B_{pa}$  have been set at 252,523t. The limit reference point  $B_{lim}$  has been set at 196,334t. The 2023 stock assessment included a short-term forecast putting estimated SSB in 2024 at 395,984t, above the target and limit reference levels. Additionally, the catch advice states that “stock size (ages 1+) is above MSY  $B_{trigger}$ ,  $B_{pa}$ , and  $B_{lim}$ ” (ICES 2023). Current stock size is estimated to be larger than the target and limit reference point levels (see Figure 2).

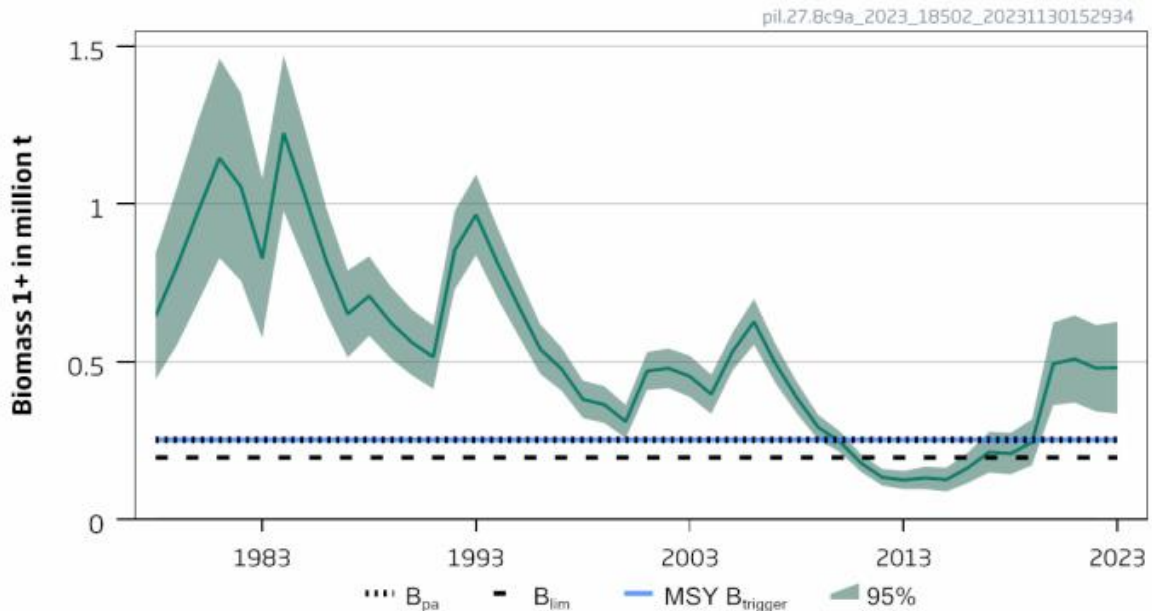


Figure 2. Sardine in ICES Divisions 8c & 9a, estimated SSB relative to current reference points (ICES, 2023).

**Therefore, the species is considered, in its most recent stock assessment, to have a biomass above the limit reference point (or proxy) and it PASSES clause C1.2.**

**References**

ICES. 2023. Sardine (*Sardina pilchardus*) in divisions 8.c and 9.a (Cantabrian Sea and Atlantic Iberian waters). In Report of the ICES Advisory Committee, 2023. ICES Advice 2023, pil.27.8c9a. <https://doi.org/10.17895/ices.advice.21975209>

**Links**

MarinTrust Standard clause	1.3.2.2
FAO CCRF	7.5.3
GSSI	D.3.04, D5.01